

BLUE DIAMOND GRAPPLE OVERVIEW

LIGHT DUTY GRAPPLE BUCKET



DUAL CLAMP MODELS

66" WORKING WIDTH

FEATURES INCLUDE:

- 3/8" steel top clamp and tine thickness
- Dual independent top clamps
- Cylinder protection covers on root grapple
- Opens to 30"
- Best suited for machines up to 50 HP or 1,500 lb lift capacity

LIGHT DUTY ROOT GRAPPLE



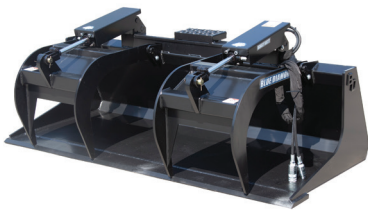
DUAL CLAMP MODELS

48"/52"/56"/60"/66" WORKING WIDTH

SINGLE CLAMP MODELS

48"/52" WORKING WIDTH

HEAVY DUTY GRAPPLE BUCKET



DUAL CLAMP MODELS

60"/66"/72" WORKING WIDTH

FEATURES INCLUDE:

- 1/2" thick top clamps
- Cylinder protection covers
- Protected hoses
- Greaseable pivot pins
- Opens to 32"
- Best suited for machines up to 65 HP or 2,500 lb lift capacity

HEAVY DUTY ROOT GRAPPLE



DUAL CLAMP MODELS

60"/66"/72" WORKING WIDTH

HDX GRAPPLE BUCKET



DUAL CLAMP MODELS

72" WORKING WIDTH

FEATURES INCLUDE:

- 1/2" thick top clamps
- Stronger cylinder protection covers
- Upgraded stronger welded cylinder
- Upgraded thicker rear cross tubes - 1/4" thick
- Protected hoses
- Opens to 32"
- Best suited for machines up to 75 HP

HDX ROOT GRAPPLE



DUAL CLAMP MODELS

72" WORKING WIDTH

SEVERE DUTY GRAPPLE BUCKET



DUAL CLAMP MODELS

66"/72"/78"/84" WORKING WIDTH

FEATURES INCLUDE:

- Grapple bucket: 3/4" thick top clamps
- Root grapple: 1/2" thick top clamps
- Root grapple: 8" spacing between tines
- Cylinder protection covers
- 90° fittings on couplers to prevent cylinder tipping back and breaking couplers
- Protected hoses with no-pinch hose routing
- Greaseable pivot pins
- Grapple bucket: bolt-on sides and edges
- Root grapple: Solid mount plate
- Opens to 34"
- Best suited for machines with 50+ HP

SEVERE DUTY ROOT GRAPPLE



DUAL CLAMP MODELS

66"/72"/78"/84" WORKING WIDTH



BLUE DIAMOND GRAPPLE OVERVIEW

SEVERE DUTY ROCK BUCKET GRAPPLE

FEATURES INCLUDE:

- 3/8" thick tines
- No-pinch hose routing for grapple
- Back is open on either side of mount for better sifting
- Bolt-on sides can be removed for moving logs
- Cutting edge for better leveling
- Increased structure in top clamps to prevent twisting
- Greaseable pivot pins
- Suited for machines with 50+ HP



DUAL CLAMP MODELS
72"/78"/84" | WORKING WIDTH

HEAVY DUTY ROCK BUCKET GRAPPLE

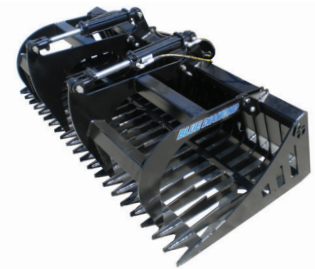
FEATURES INCLUDE:

- 1/2" thick tines
- 3" spacing between tines
- Laser-cut cutting edge gussets on tips of tines
- 3 styles of grapples available
- Works great as a land plane and for light clearing
- Standard duty is best suited for machines up to 1500 lbs lift capacity
- Heavy duty is suited for machines with max of 50 HP and 2,500 lb lift capacity



DUAL CLAMP MODELS
66"/72"/78"/84" | WORKING WIDTH

STANDARD DUTY ROCK BUCKET GRAPPLE



DUAL CLAMP MODELS
60"/66"/72" | WORKING WIDTH

SEVERE DUTY GRAPPLE RAKE

FEATURES INCLUDE:

- Severe duty has 3/4" thick tines
- Heavy duty has 1/2" thick tines
- Dual cylinders
- Greaseable pivot pins
- Severe duty opens to 58" with replaceable teeth
- Heavy duty opens to 52"
- Severe duty is best suited for machines under 120 HP
- Heavy duty is best suited for machines under 65 HP



DUAL CLAMP MODELS
72"/78"/84" | WORKING WIDTH

HEAVY DUTY GRAPPLE RAKE



DUAL CLAMP MODELS
63"/72"/84" | WORKING WIDTH

EXTREME DUTY HIGH CAPACITY ROOT GRAPPLE

FEATURES INCLUDE:

- 1/2" thick tines with 1/2" top clamps
- 25" x 42" opening inside of clamps
- Dual acting cylinders
- Heavily reinforced mount
- Serrated tine tips to rip through roots
- Opens to 59" at tip of tines/clamp
- Suited for machines with 50+ HP



DUAL CLAMP MODELS
72"/78"/84"/96" | WORKING WIDTH

TRACTOR GRAPPLE

FEATURES INCLUDE:

- 1" thick steel end tines
- 8" spacing between tines
- Available with universal skid steer, Euro-Ag/Global, or JD 400/500 mounts
- Hoses included with 1/2" flat face couplers
- OEM colors available
- Opens to 42"



DUAL TOP CLAMP MODELS
60"/66"/72" | WORKING WIDTH