

# Plate Compactor

## Operation and Maintenance Manual



151005, 151010, 151015



888-376-7027 | [BlueDiamondAttachments.com](http://BlueDiamondAttachments.com)

Register your  
**WARRANTY**  
within 30 days  
of purchase



BD-092

## Introduction: Owner Information

Thank you for your decision to purchase a Blue Diamond® Plate Compactor. To ensure maximum performance of your equipment, it is mandatory that you thoroughly study the Operator's Manual and follow the recommendations. Proper operation and maintenance are essential to maximize equipment life and prevent personal injury.

Operate and maintain this equipment in a safe manner and in accordance with all applicable local, state, and federal codes, regulations and / or laws. Follow all on-product labeling and instructions.

Make sure that all personnel have read this Operator's Manual and thoroughly understand safe and correct operating, installation and maintenance procedures.

Blue Diamond® is continually working to improve its products. Blue Diamond® reserves the right to make any improvements or changes as deemed practical and possible without incurring any responsibility or obligation to make any changes or additions to equipment sold previously.

Although great care has been taken to ensure the accuracy of this publication, Blue Diamond® makes no warranty or guarantee of any kind, written or expressed, implied or otherwise with regard to the information contained within this manual. Blue Diamond® assumes no responsibility for any errors that may appear in this manual and shall not be liable under any circumstances for incidental, consequential or punitive damages in connection with, or arising from the use of this manual.

Keep this manual available for frequent reference. All new operators or owners must review the manual before using the equipment and annually thereafter. Contact your Blue Diamond® Attachments Dealer for assistance, information, or additional copies of the manual. Contact [www.bluediamondattachments.com](http://www.bluediamondattachments.com) or call 888-376-7027 for a complete list of dealers in your area.

## Serial Number Location:

Please record attachment information in the space provided for future reference.



Model Number: \_\_\_\_\_

Serial Number: \_\_\_\_\_

Dealer Name: \_\_\_\_\_

Dealer Number: \_\_\_\_\_

Date of Purchase: \_\_\_\_\_

The serial number plate is located on top of the frame as shown above.

Always use your serial number when requesting information or when ordering parts.

**NOTE:** The directions left, right, front, and rear, as mentioned throughout this manual, are as viewed from the operator's position.

# Table of Contents

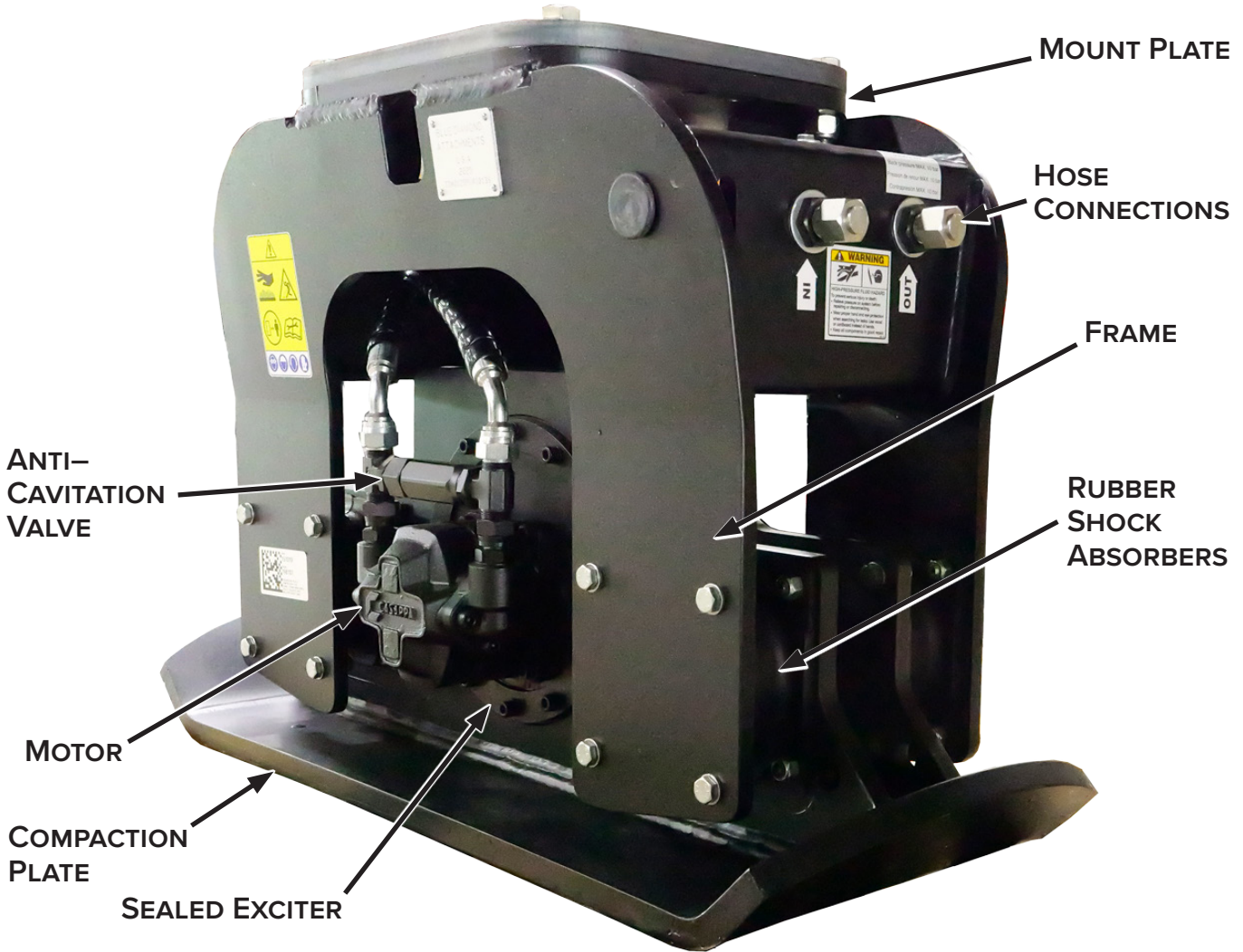
---

Introduction: <b>Owner Information</b> .....	2
1. Introduction.....	4
1.1 <b>Attachment Identification</b> .....	4
1.2 <b>About this Attachment</b> .....	4
1.3 <b>Attachment Model Numbers</b> .....	4
2. Safety .....	5
2.1 <b>General Safety Information</b> .....	5
2.2 <b>Operators</b> .....	6
2.3 <b>Safety Guidelines</b> .....	7
3. Operation .....	9
3.1 <b>Pre–Operation Inspection</b> .....	9
3.2 <b>Transporting the Attachment</b> .....	10
3.3 <b>Entering and Exiting the Prime Mover</b> .....	10
3.4 <b>Attachment Installation with Skid Steer</b> .....	11
3.5 <b>Attachment Installation with Excavator</b> .....	13
3.6 <b>Operating the Attachment</b> .....	14
3.7 <b>Operations to Avoid</b> .....	15
4. Maintenance .....	16
4.1 <b>Service Schedule</b> .....	16
4.2 <b>Cleaning</b> .....	17
4.3 <b>Daily Maintenance</b> .....	17
4.4 <b>Weekly Maintenance</b> .....	17
4.5 <b>Gear Oil Replacement</b> .....	17
4.6 <b>Hydraulic Circuit</b> .....	18
4.7 <b>Storage</b> .....	18
4.8 <b>Troubleshooting</b> .....	18
5. Parts.....	19
5.1 <b>Differences Between Revisions</b> .....	19
5.2 <b>151005 Components</b> .....	23
5.3 <b>151010 Components</b> .....	26
5.4 <b>151015 Components</b> .....	29
5.5 <b>Safety Decals</b> .....	32
6. Specifications .....	33
6.1 <b>Attachment Specifications</b> .....	33
6.2 <b>Torque Specifications</b> .....	34
6.3 <b>Torque Specifications – Metric</b> .....	35
Warranty .....	37



# 1. Introduction

## 1.1 Attachment Identification



## 1.2 About this Attachment

The Plate Compactor is an essential tool for soil compactions in trenching, slope work, and foundation prep. These hydraulic attachments use vibratory force and the weight of the host machine to efficiently compact soil, gravel, or asphalt. Industry leading technology protects the machine from excessive vibrations yet offers excessive vibrations yet offers excellent compaction ability, making this the ideal attachment for contractors working on utility installations, retaining walls, or foundation prep.

## 1.3 Attachment Model Numbers

MODEL NUMBER	MODEL	RATED FOR MACHINES WEIGHING
151005	C310	5K – 12K lbs
151010	C410	12K – 22K lbs
151015	C610	24K – 46K lbs

\*Model Numbers do not include the mount for any host machine. Mini skid steer, skid steer, and excavator mounts are available, depending on the model.

## 2. Safety

### 2.1 General Safety Information



This **SAFETY ALERT SYMBOL** identifies important safety messages on the equipment and in the owner's manual. When you see this symbol, be alert to the possibility of personal injury and carefully read the message that follows.



The signal word **IMPORTANT** identifies procedures which must be followed to avoid damage to the machine.



The signal word **DANGER** on the machine and in the manuals indicates a hazardous situation which, if not avoided, will result in death or serious injury.



The signal word **WARNING** on the machine and in the manuals indicates a potentially hazardous situation which, if not avoided, could result in death or serious injury.



The signal word **CAUTION** on the machine and in the manuals indicates a potentially hazardous situation which, if not avoided, may result in minor or moderate injury. It may also be used to alert against unsafe practices.

**NOTE:** Notes are used to indicate important information. This information may be repeated in other areas of the manual.

### Terminology

Host Machine, Machine, Prime Mover:

- The Plate Compactor can be attached to many different pieces of equipment; therefore, the terms “host machine”, “machine”, and “prime mover” will be used. Host machine and machine mean any equipment, tractor, or skid steer providing power to the attachment.

Attachment, Implement, Equipment:

- The Plate Compactor is the tool that is being attached to the host machine; therefore, the terms “attachment”, “implement”, and “equipment” will be used. The attachment and implement mean any tool that is being used on any equipment, excavator, or skid steer being used for different applications.

### Operating Safety

- Read and follow instructions in this manual and the machine's Operator's Manual before operating.
- The manual must always remain with the machine. In case of loss or damage, request a new copy from your dealer or from Blue Diamond®.
- Strictly follow all rules prescribed by the safety pictograms/decals applied to the machine. Ensure that all safety pictograms/decals are legible. If pictograms/decals are worn, they must be replaced with new ones obtained from Blue Diamond® and placed in the position indicated by this manual.
- Before using the machine, make sure that all safety devices are installed and in good working condition. In case of damaged or missing shields, replace them immediately.
- It is absolutely forbidden to remove or alter safety devices and/or safety precautions
- Pay maximum attention to avoid any accidental contact with rotating parts of the machine.
- If the use of the machine is required at night or in conditions of reduced visibility, use the lighting system of the prime mover and an auxiliary lighting system if required.

## 2. Safety

### 2.2 Operators

#### Qualified Operators

The operator is a person suited to the work and who is physically and psychologically able to withstand the demands connected with operating the equipment for its intended use. The operator must not allow anyone to approach the machine while it is working and must not allow external personnel to operate the machine or attachment.

The operator is to follow the given instructions in this manual and the machine operator's manual in order to obtain maximum performance, minimal fuel consumption, and maximum safety for himself and for others.

The operator is responsible for scrupulously observing all the instructions given in this manual.



**DANGER**



#### **AVOID SERIOUS INJURY OR DEATH**

Operators must receive instructions before operating the machine. Untrained operators can cause serious injury or death.

For an operator to be qualified, he or she must not use drugs or alcoholic drinks which impair alertness or coordination while working. An operator who is taking prescription drugs must get medical advice to determine if he or she can safely operate a machine and the equipment. For an operator to be qualified, he or she must have read and understood the instructions of this manual, he or she must make adequate preparation for the proper use of the machine, and he or she must hold a driving license.

In case of doubt regarding the use of the machine and/or the interpretation of this manual, the operator must contact either their dealer or Blue Diamond®.

#### Operator Training

- Check the rules and regulations at your location. The rules may include an employer's work safety requirements. Regulations may apply to local driving requirements or use of a Slow Moving Vehicle (SMV) emblem. Regulations may identify a hazard such as a utility line.
- The new operator must start in an area without bystanders and use all the controls until he or she can operate the machine safely under all conditions of the work area.

#### Operator Safety

- Before starting, and during operation of the attachment, make sure there are no people or animals in the operation area; the machine can project material from the back with risks of serious injury or death.
- During operation, adjustment, maintenance, repairing, or transportation of the machine, the operator must always use appropriate Personal Protective Equipment (PPE) including but not limited to safety glasses, working gloves, dust-mask, safety helmet, and hearing protection.
- Do not operate the attachment or machine while wearing loose fitting clothing that can be entangled or caught in parts of the machine.
- Do not operate the implement when tired, not in good condition, or under the influence of alcohol or drugs.

## 2. Safety

### 2.2 Operators Cont'd

#### Operator Position and Zones

When the machine is running, the operator must pay particular attention to their own position [Figure 1, Item 1] to prevent being a source of danger to themselves or to bystanders. The area surrounding the equipment is divided into the operation or danger zone [Figure 1, Item 4] and the safe zone [Figure 1, Item 5].

The Operation or Danger Zone is the location where the operator has to work while the equipment is operating normally. The Operator's Zone is considered as a potentially dangerous area. Individuals should not be present in the Operation Zone [Figure 1, Item 3] while the equipment is running. It is extremely important that all accident prevention standards indicated are strictly applied.

The Safe Zone is where bystanders should remain while the equipment is running [Figure 1, Item 2].

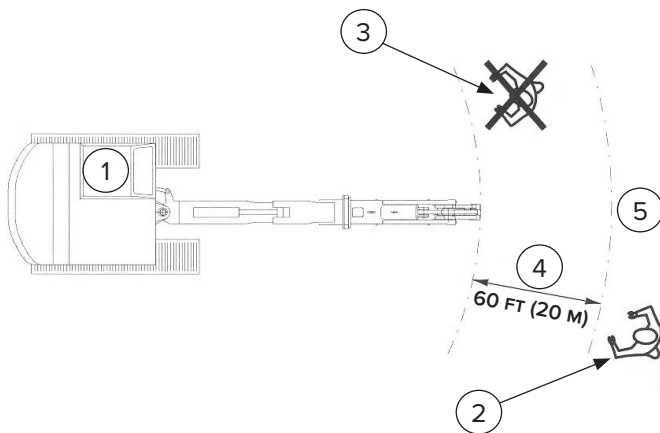


Figure 1

### 2.3 Safety Guidelines

#### Operating Safety

- Read and follow instructions in this manual and the machine's Operator's Manual before operating.
- Under no circumstances should young children be allowed to work with this equipment.
- This equipment is dangerous to persons unfamiliar with its operation.
- Check for overhead and / or underground lines before operating equipment (if applicable).
- In addition to the design and configuration of equipment, hazard control and accident prevention are dependent upon the awareness, concern, prudence, and proper training of personnel involved in the operation, transport, maintenance, and storage of equipment.
- Check that the attachment is securely fastened to the machine.
- Make sure all the machine controls are in the **NEUTRAL** before starting the machine.
- Operate the equipment only from the operator's position.
- Operate the equipment according to the Operator's Manual.
- When learning to operate the equipment, do it at a slow rate in an area clear of bystanders.
- Do not permit personnel to be in the work area when operating the equipment.
- The equipment must be used **ONLY** on approved machines.
- Do not modify the equipment in any way. Unauthorized modification may impair the function and / or safety and could affect the life of the equipment.
- Do not make any adjustments or repairs on the equipment while the machine is running.
- Keep shields and guards in place. Replace if damaged.

## 2. Safety

### 2.3 Safety Guidelines Cont'd

#### Operating Safety Cont'd

- DO NOT operate equipment in poor visibility conditions such as fog, darkness, or any conditions that limit clear visibility less than 300 feet (100 m) in front of and to the sides of the equipment.
- DO NOT operate in a work area that has not been inspected for foreign debris and obstacles.
- Remove any foreign objects and clearly mark any objects that cannot be removed.
- Wear safety glasses, gloves, hearing protection, and other protective clothing when required.

#### Machine Requirements and Capabilities

- The machine's operator's cab should be equipped with a thermoplastic polycarbonate or similar material front window, and similar protection on the sides of the operator's cab before operating the equipment.
- Keep bystanders clear of moving parts and the work area. Keep children away.
- Be sure to follow the information in "6.1 Attachment Specifications" on page 33.
- Use caution on slopes and near banks and ditches to prevent overturn.

#### Fire Prevention Safety

- Flammable debris (leaves, grass, etc.) must be removed regularly. If flammable debris is allowed to accumulate, it can cause a fire hazard. Clean often to avoid this accumulation.
- All fuels, most lubricants, and some coolant mixtures are flammable. Flammable fluids that are leaking or spilled onto hot surfaces or onto electrical components can cause a fire.

#### Transporting Safety

- Comply with state and local laws governing highway safety and movement of machinery on public roads.

- Check local laws for all highway lighting and marking requirements.
- Always yield to oncoming traffic and move to the side of the road so any following traffic may pass.
- Never allow riders on either machine or equipment.
- If transporting the equipment on a truck or trailer, make sure the equipment is properly secured to the transport vehicle.

#### Personal Protective Equipment (PPE)



**Proper Work Clothes:** To help ensure your safety as a designated operator wear proper work clothes including tight fitting clothes, protective gloves, and shoes.



**Hand Protection:** To help ensure your safety as a designated operator wear protective gloves.



**Protective Shoes:** To help ensure your safety as a designated operator wear protective shoes.



**Safety Helmet:** To help ensure your safety as a designated operator wear a safety helmet.



**Safety Helmet and Eye/Ear Protection:** To help ensure your safety as a designated operator wear a safety helmet and eye/ear protection.



## 3. Operation

### 3.1 Pre–Operation Inspection

Before operating the Plate Compactor for the first time and each time thereafter, use the following list as a guideline during equipment inspection.



#### WARNING



##### AVOID SERIOUS INJURY OR DEATH

- Disengage machine's auxiliary hydraulics, engage the machine's parking brake, stop the engine, and make sure all moving parts are completely stopped before connecting, disconnecting, adjusting, or cleaning equipment.
- Always keep shields and guards in place when using the equipment.
- Disengage machine's auxiliary hydraulics for road travel.
- Keep hands, feet, and clothing away from rotating parts.

- Lubricate the attachment per the schedule outlined in the Maintenance section. See "6.2 Torque Specifications" on page 34.
- Check the attachment mounting frame for damage or cracks.
- Check that all shields and guards are in place.
- Check for loose bolts and tighten them if necessary.
- Check all welds on the attachment for wear and damage each time the attachment is removed from the machine.
- Check for damaged or missing safety decals. Replace if necessary.
- Inspect the machine's mounting frame. (See the machine's Operator's Manual for inspecting the mounting frame.) Replace any parts that are damaged, bent, or missing. Keep all fasteners tight. Look for cracked welds.
- Verify that the attachment is properly connected to the machine.



#### WARNING



Leaking fluids under pressure can enter the skin and cause serious injury or death. Immediate medical attention is required.

**Wear goggles. Use cardboard to check for leaks.**

- Check the condition of all hydraulic components for leaks. Repair as required.

**NOTE:** Do not operate with hydraulic leaks.

## 3. Operation

### 3.2 Transporting the Attachment



#### CAUTION



The operator in charge of transportation and installation of the attachment must be acquainted with the following instructions.

Be sure to pay careful attention to the weight of the Plate Compactor.



#### DANGER



##### AVOID SERIOUS INJURY OR DEATH

Falling hydraulic equipment during handling can cause serious injury or death.

Determine the total weight of the Plate Compactor, including the mount, using “6.1 Attachment Specifications” on page 33.

In order to move the attachment safely when not attached to the excavator or skid steer, it is necessary to use a suitable and safe lifting system.

Do not transport the attachment directly on pallet forks.

Once the equipment is placed on a pallet, secure it with straps or cables.

Always use a means of transport and lifting that can accommodate the weight of the attachment.

Always use a means of transport and lifting that can accommodate the weight of the attachment.



#### WARNING



Always move with care; each inappropriate movement can be very dangerous.

**DO NOT** pass or stop under the attachment when it is lifted.

### 3.3 Entering and Exiting the Prime Mover



#### IMPORTANT



See the machine's Operator's Manual for detailed information on operating the loader.

#### Entering the Operator's Position

Use the safety treads, handles, and steps on the attachment and machine to enter the operator's position. Always maintain three (3) points of contact.

When in the operator's position, lower safety seat bar, start the engine, and release the parking brake.

#### Leaving the Operator's Position



#### WARNING



##### AVOID SERIOUS INJURY OR DEATH

- Always park on a flat, level surface.
- Lower lift arms and place attachment flat on the ground.
- Place all controls in NEUTRAL.
- Engage the parking brake.
- Stop the engine, and remove the key.
- Wait for all moving parts to stop.

**SEE MACHINE'S OPERATOR'S MANUAL FOR ADDITIONAL INFORMATION.**

Park the machine / attachment on a flat, level surface.

Place all controls in neutral, engage the parking brake, stop the engine, and wait for all moving parts to stop. Leave the operator's position.

## 3. Operation

### 3.4 Attachment Installation with Skid Steer

#### Connecting Attachment to the Machine



#### WARNING



#### CRUSH HAZARD

- Before moving the machine, look in all directions and make sure no bystanders, especially small children, are in the work area.
- Do not allow anyone between the machine and attachment when approaching the attachment for connecting.
- Keep fingers and hands out of pinch points when connecting and disconnecting the attachment.

Before connecting to the attachment, inspect the machine's mounting plate. (See the machine's Operator's Manual for inspecting the mounting frame).

Enter the operator's position. See "Entering the Operator's Position" on page 10.

Drive the machine slowly forward, until the top edge of the machine's mounting plate is under the top flange of the attachment mounting frame.

Slowly tilt the machine's mounting plate back until the attachment mounting frame fully contacts the front of the machine's mounting plate.

Leave the operator's position. See "Leaving the Operator's Position" on page 10.



#### WARNING



#### AVOID SERIOUS INJURY OR DEATH

The locking pins / wedges must extend through the holes in the attachment mounting frame. Failure to secure locking pins / wedges can allow attachment to come off.

**SEE MACHINE'S OPERATOR'S MANUAL FOR ADDITIONAL INFORMATION.**

Engage attachment locking levers / wedges (See the machine's Operator's Manual for detailed information).

#### Connecting Hydraulic Hoses



#### IMPORTANT



Thoroughly clean the quick couplers before making connections. Dirt can quickly damage the hydraulic system.

Remove dirt or debris from the male and female couplers. Visually inspect the couplers for corroding, cracking, damage, or excessive wear. Replace as needed.

Connect the attachment hydraulic hoses to the machine. Pull on each hose to verify full connection is made.

Connect the pressure line hose to the entry side labeled "IN".

Connect the return line to the exit side labeled "OUT". See Figure 2.

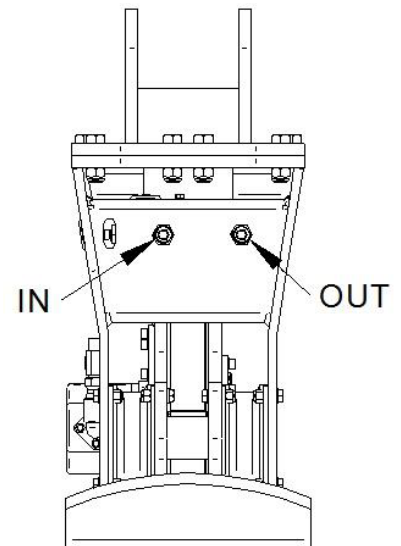


Figure 2

## 3. Operation

### 3.4 Attachment Installation with Skid Steer Cont'd

#### Disconnecting Hydraulic Hoses



#### WARNING



##### AVOID SERIOUS INJURY OR DEATH

Hydraulic fluid, tubes, fittings, and quick couplers can get hot during operation. Be careful when connecting and disconnecting hydraulic hoses.



#### WARNING



Leaking fluids under pressure can enter the skin and cause serious injury or death. Immediate medical attention is required. Wear goggles. Use cardboard to check for leaks.

Relieve auxiliary hydraulic pressure. (See the machine's Operator's Manual for correct procedure.)

Disconnect attachment hydraulic hoses from the machine.

#### Disconnecting Attachment From the Machine

Relieve auxiliary hydraulic pressure. (See the machine's Operator's Manual for correct procedure.)

Park the machine and attachment on a flat level surface. Lower the attachment flat on the ground.

Leave the operator's position. See "Leaving the Operator's Position" on page 10.

Disconnect attachment hydraulic hoses from the machine.

Disengage locking pins / wedges. (See the machine's Operator's Manual for correct procedure.)

Enter the operator's position. See "Entering the Operator's Position" on page 10.

Slowly tilt the machine's mounting plate forward until the attachment mounting frame is free from the machine's mounting plate.

Drive the machine slowly backward, away from the attachment.



## 3. Operation

### 3.5 Attachment Installation with Excavator

#### Connecting Attachment to the Machine



#### WARNING



##### AVOID SERIOUS INJURY OR DEATH

The locking pins must extend through the holes in the attachment mounting frame. Failure to secure locking pins can allow attachment to come off.

**SEE MACHINE'S OPERATOR'S MANUAL FOR ADDITIONAL INFORMATION.**

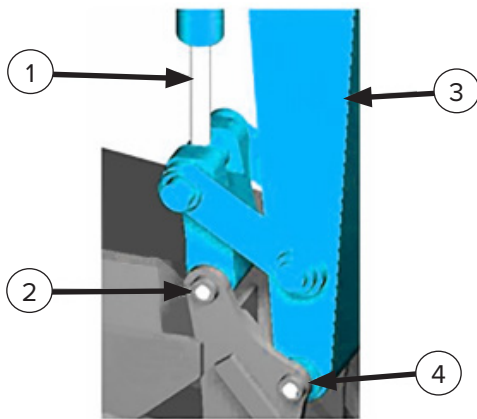


Figure 3

Order the appropriate bracket interchange from your local Blue Diamond® Attachments dealer by supplying the brand and model information of your machine.

The bracket interchange is secured to the attachment with bolts.

Use an appropriate lifting device and slings to place the bracket interchange onto the attachment.

Align the holes between the bracket interchange and deck, and install the appropriate hardware.

Torque hardware to the specification detailed in the “6.3 Torque Specifications – Metric” on page 35.

Position the excavator at the rear of the attachment.

Extend the tool cylinder [Figure 3, Item 1] and paddle until the pin position is aligned.

Leave the operator's position. See “Leaving the Operator's Position” on page 10.

Install the pin through the attachment and paddle and secure with appropriate hardware.

Enter the operator's position. See “Entering the Operator's Position” on page 10.

Adjust the height of the dipperstick [Figure 3, Item 3] to align with the pin position [Figure 3, Item 4].

Leave the operator's position. See “Leave the operator's position. See “Leaving the Operator's Position” on page .” on page 13.

Install the pin through the attachment and paddle and secure with appropriate hardware.

**NOTE:** Some excavators are equipped with hydraulic locking systems, which are operated from the cab of the machine.

#### Connecting Hydraulic Hoses



#### IMPORTANT



Thoroughly clean the quick couplers before making connections. Dirt can quickly damage the hydraulic system.

Remove dirt or debris from the male and female couplers. Visually inspect the couplers for corroding, cracking, damage, or excessive wear. Replace as needed.

Connect the attachment hydraulic hoses to the machine. Pull on each hose to verify full connection is made.

## 3. Operation

### 3.5 Attachment Installation with Excavator Cont'd

#### Disconnecting Hydraulic Hoses



#### WARNING



##### AVOID SERIOUS INJURY OR DEATH

Hydraulic fluid, tubes, fittings, and quick couplers can get hot during operation. Be careful when connecting and disconnecting hydraulic hoses.



#### WARNING



Leaking fluids under pressure can enter the skin and cause serious injury or death. Immediate medical attention is required. Wear goggles. Use cardboard to check for leaks.

Relieve auxiliary hydraulic pressure. (See the machine's Operator's Manual for correct procedure).

Disconnect attachment hydraulic hoses from the machine.

#### Disconnecting Attachment From the Machine

Relieve auxiliary hydraulic pressure. (See the machine's Operator's Manual for correct procedure.)

Park the machine and attachment on a flat level surface. Lower the attachment flat on the ground.

Leave the operator's position. See "Leaving the Operator's Position" on page 10.

Disconnect attachment hydraulic hoses from the machine.

Remove hardware securing the pins and remove the pins from the paddle and attachment.

Enter the operator's position. See "Entering the Operator's Position" on page 10.

Raise the dipperstick to clear the attachment.

Drive the machine slowly backward, away from the attachment.

### 3.6 Operating the Attachment



#### WARNING



Before performing any of the actions in this section, section 2. Safety must be read in its entirety and understood fully to avoid any type of risk or accident. If you do not fully understand this manual, DO NOT connect or operate the machine or carry out any maintenance operations. Contact your local dealer or Blue Diamond® Product Support immediately to ensure your safety and that of the machine.



#### DANGER



##### CARRIER LOSS BALANCE

The machine can slide or flip. Be vigilant when moving the machine, and ensure that it is in a safe and stable position during operation.

- Before starting the attachment, move the excavator boom back and forth several times to lubricate the bearings inside the vibration case.
- Always heat the oil before operating, especially at low temperatures. Cycle the host machine functions until the oil reaches the temperature of 104 – 113°F (40 – 45°C).
- To avoid excessive machine vibration when starting, allow the attachment motor to reach full speed before engaging the work surface.
- Once the attachment is placed in the work area, there is no need to disengage the hydraulics to reposition it.
- Keep the attachment parallel to the work surface; an unbalanced load will damage the anti-vibrators.

### 3. Operation

- Move the host machine in a straight line when the attachment is in operation. See Figure 4.

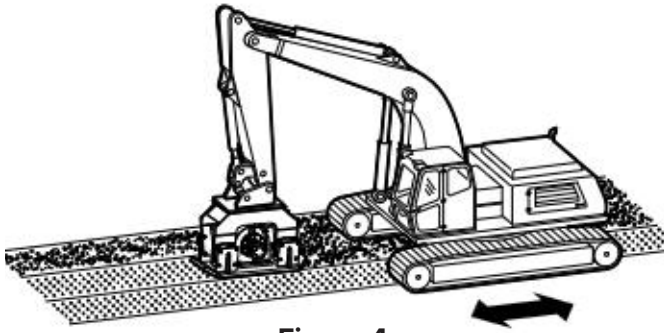


Figure 4

- Once the area is compacted, pick the attachment up using the host machine and move it to the next area to be compacted.

**NOTE:** Sometimes it is necessary to compact the area more than once to achieve the desired compaction.



#### **AVOID DAMAGE TO ATTACHMENT**

Do not excessively load the attachment with the excavator boom during the compacting phase.

- The casing and vibration plate must not come into contact during the compacting phase. Improper contact examples can be seen circles in Figure 5. When this contact is seen, there is an excessive load of the host machine.

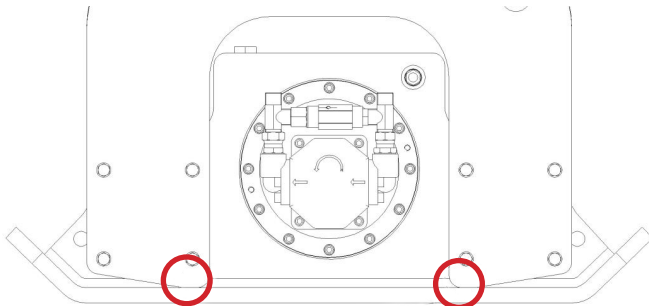


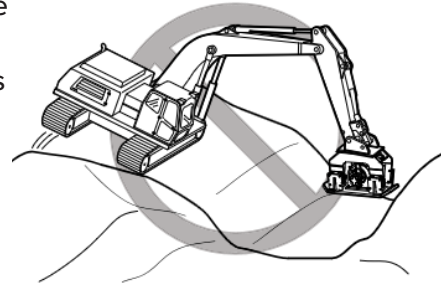
Figure 5

### 3.7 Operations to Avoid

#### **Unstable Surface**

The host machine can have serious stability problems and can overturn if its base is not stable.

Be sure to work with the host machine on a stable surface.



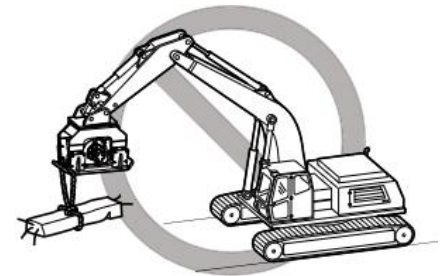
#### **Repositioning by Loading the Attachment**



Never reposition the host machine by loading the attachment. This action can cause serious damage to the attachment.

#### **Lifting & Transportation**

Never use the attachment to lift or move loads. This action can cause serious damage to the attachment.



## 4. Maintenance

### 4.1 Service Schedule

DESCRIPTION	SERVICE PROCEDURES					
	Check	Clean	Lube	Change	Adjust	Drain
Daily Maintenance (or every 8 hours)						
Hydraulic Fittings	•					
Hydraulic Hoses	•					
Hydraulic Motor	•	•				
All Hardware	•					
Vibration Dampers	•					
Welds	•					
Weekly Maintenance (or every 40 hours)						
All Hardware	•					
Oil Level	•					
1000 Hour Maintenance						
Gear Oil				•		





## 4. Maintenance



### WARNING



#### AVOID SERIOUS INJURY OR DEATH

DO NOT carry out any maintenance on the attachment or on the hydraulic circuit when they are under pressure or at high temperatures.

Disconnect the hoses between the attachment and host machine.

Maintenance must be performed to extend the lifetime of your attachment.

### 4.2 Cleaning

Particular care must be taken to avoid any type of oil contamination through all hydraulic hose couplings, which must be cleaned and plugged when disconnected from the host machine's hydraulic circuit.

### 4.3 Daily Maintenance

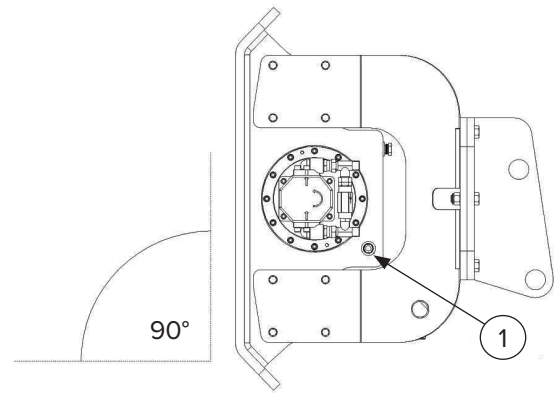
Check for the following:

- Oil leakage from the hydraulic motor
- Oil leaks from the vent cap
- Loose bolts. Pay particular attention to:
  - Adapting plate bolts
  - Hydraulic motor bolts
  - Anti-vibrator fixing bolts
- Possible damage to the vibration dampers
- Damaged welds

### 4.4 Weekly Maintenance

Check the oil level inside the vibrating case.

The attachment must be placed in a vertical position before starting and verified that the oil is above the central position of the oil level inspection point [Figure 6, Item 1]. If needed, add wear-resistant gear oil.



FLOOR

Figure 6

### 4.5 Gear Oil Replacement

The replacement of the gear oil inside the vibrating unit, which contains the eccentric masses, gears, and bearings, must be performed every 1,000 hours.

To replace the gear oil, remove the filter cap [Figure 7, Item 1]. Using a tube, fill the inner case with the amount of oil indicated in “6.1 Attachment Specifications” on page 33. Use a wear-resistant gear oil 80W90 with the following features:

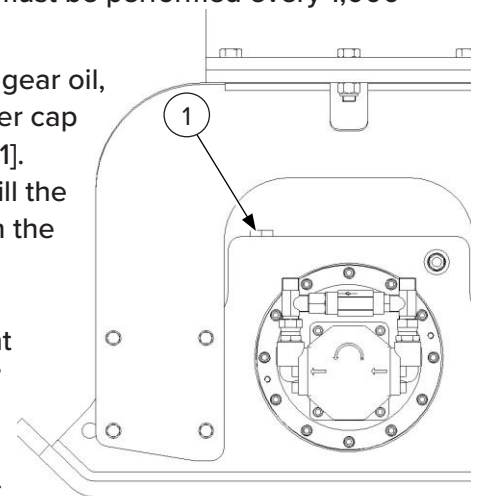


Figure 7

- Density at 68°F (20°C) – 890 kg/mm<sup>3</sup>
- Viscosity at 104°F (40°C) – 135 cSt
- Freezing point – -20°F (-29°C)
- Aspect – clear

## 4. Maintenance

### 4.6 Hydraulic Circuit

#### Hydraulic Oil Temperature

Verify that the hydraulic oil temperature in the host machine's tank does not exceed 176°F (80°C) during operation.

Higher temperatures can cause damage to the attachment's hydraulic motor.

#### Hydraulic Oil Level

It is essential to check the hydraulic oil level of the host machine's tank. If it is under the minimum level, the attachment can act abnormally and cause damage to the hydraulic motor.

#### Hydraulic Hoses & Couplers

Hydraulic hoses must be checked for damage, such as crushing and oil leakage.

### 4.7 Storage

#### Storage

Sometimes it may be necessary to store your Plate Compactor for an extended period of time. Below is a list of items to perform before storage.

- Make sure the hydraulic hose couplers are capped, plugged, or connected to each other.

- Thoroughly wash the attachment before storing it for long periods.
- Check for loose hardware, missing guards, or damaged parts.
- Check for damaged or missing decals. Replace if necessary.
- Replace worn or damaged parts.
- Place the attachment flat on the ground in a dry, protected shelter.

**NOTE:** In muddy conditions or to prevent the attachment from freezing to the ground, put the attachment on planks or blocks before removing the attachment from the machine.

#### Return to Service

After the Plate Compactor has been in storage, it is necessary to follow a list of items to return the attachment to service.

- Check the attachment's oil level and fill if necessary.
- Lubricate the attachment.
- Connect and operate the attachment and check for correct function.
- Check for leaks. Repair as needed.

### 4.8 Troubleshooting

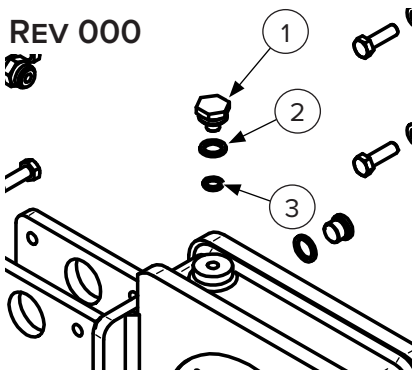
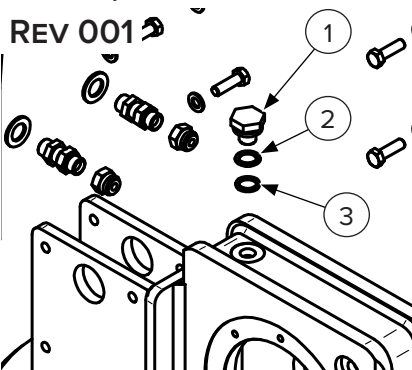
PROBLEM	CAUSE	SOLUTION
Strong vibration "blows" transferred to the host machine	Excessive pressure on the attachment preventing the vibration dampers from absorbing vibration	Decrease the load on the attachment.
	Low oil flow supplied to the attachment	Check the oil flow.
	Oil flow control valve not set correctly	Contact your local dealer or Blue Diamond® Product Support to set correctly.
Working pressure exceeding 870 PSI (60 bar) under no load	Possible bearing damage	Check and replace if needed.

# 5. Parts

## 5.1 Differences Between Revisions

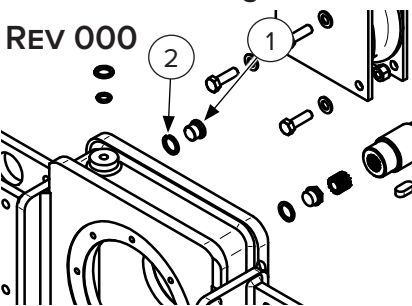
### 151005 – C310

#### Filter Tap



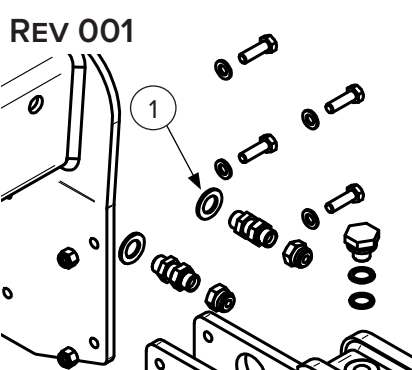
ITEM	PART NUMBER	DESCRIPTION
Revision 001		
1	251354	Filter Tap
2	251355	O-Ring
3	235305	Bonded Washer
Revision 000		
1	251505	Filter Tap
2	251121	O-Ring
3	235252	Bonded Washer

#### Internal Case Plug



ITEM	PART NUMBER	DESCRIPTION
Revision 000 Only		
1	236589	Plug
2	235305	O-Ring

#### Additional Bulkhead Washers



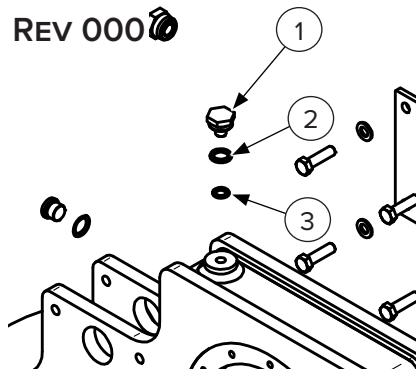
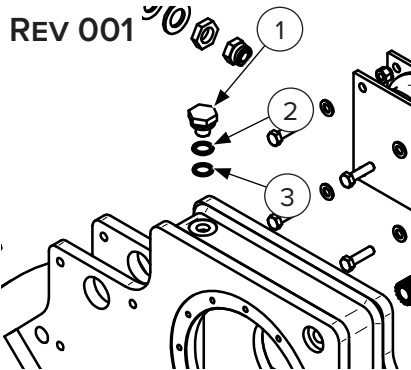
ITEM	PART NUMBER	DESCRIPTION
Revision 001 Only		
1	—	Washer

## 5. Parts

### 5.1 Differences Between Revisions Cont'd

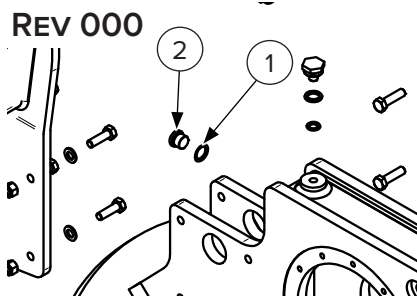
#### 151010 – C410

##### Filter Tap



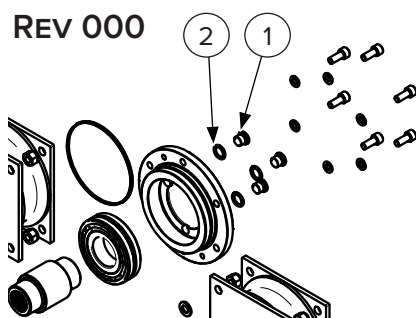
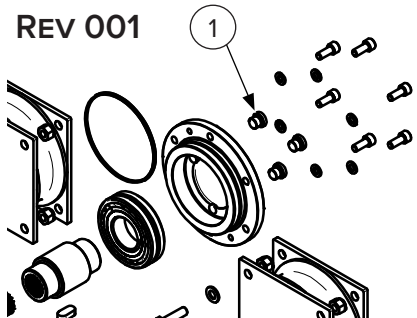
ITEM	PART NUMBER	DESCRIPTION
<b>Revision 001</b>		
1	251354	Filter Tap
2	251355	O-Ring
3	235305	Bonded Washer
<b>Revision 000</b>		
1	251505	Filter Tap
2	251510	O-Ring
3	235252	Bonded Washer

##### Internal Case Plug



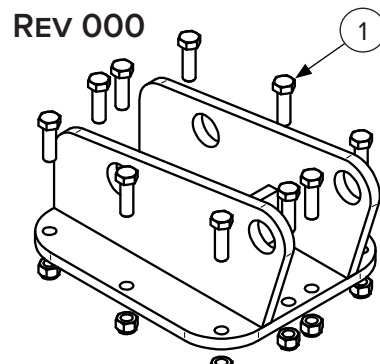
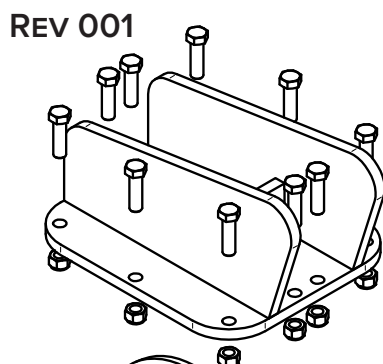
ITEM	PART NUMBER	DESCRIPTION
<b>Revision 000 Only</b>		
1	236589	Plug
2	235305	O-Ring

##### Bearing Cover Plug



ITEM	PART NUMBER	DESCRIPTION
<b>Revision 001</b>		
1	236587	Plug
2	Not Used	Bonded Washer
<b>Revision 000</b>		
1	236585	Plug
2	236574	Bonded Washer

##### Mount Bolts



ITEM	PART NUMBER	DESCRIPTION
<b>Revision 001</b>		
1	251175	Mount Bolt
<b>Revision 000</b>		
1	—	Mount Bolt



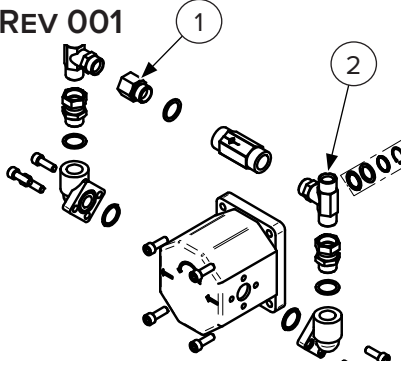
## 5. Parts

### 5.1 Differences Between Revisions Cont'd

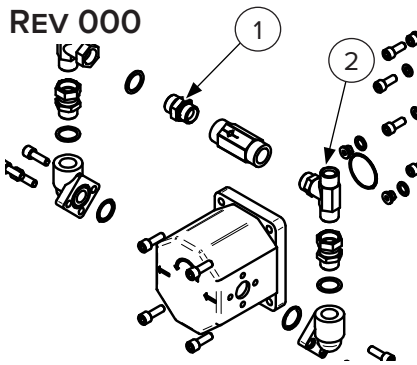
#### 151010 – C410 Cont'd

##### Motor H-Valve Fittings

REV 001



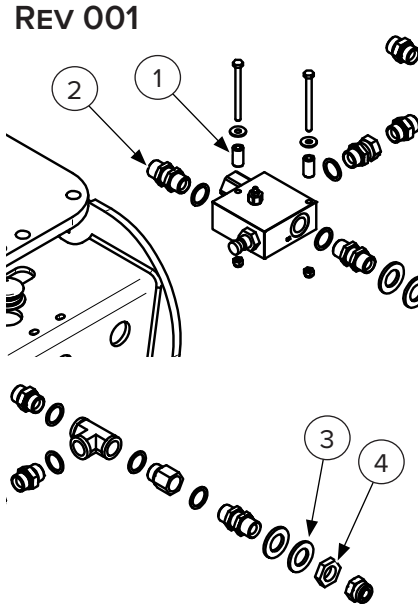
REV 000



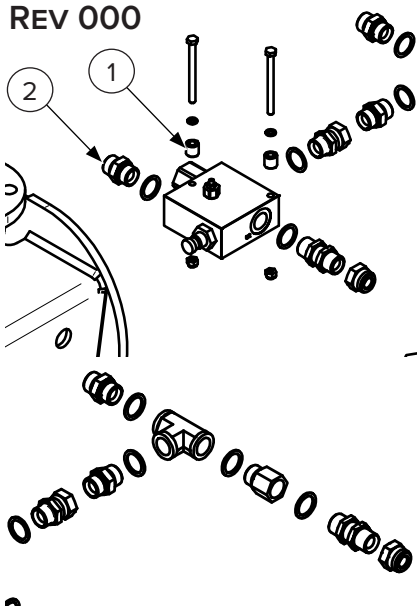
ITEM	PART NUMBER	DESCRIPTION
<b>Revision 001</b>		
1	251146	Tee Fitting
2	—	Coupling
<b>Revision 000</b>		
1	251148	Tee Fitting
2	235124	Nipple

##### Valve Block Fittings

REV 001



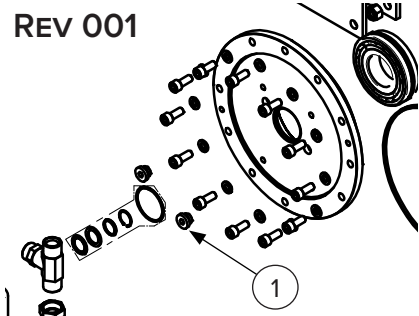
REV 000



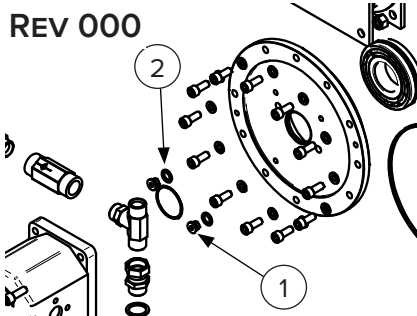
ITEM	PART NUMBER	DESCRIPTION
<b>Revision 001</b>		
1	—	Spacer Valve
2	251350	Valve Bulkhead Adapter
3	—	Washer
4	—	Nut
<b>Revision 000</b>		
1	251159	Spacer Valve
2	235124	Nipple
3	Not Used	Washer
4	Not Used	Nut

##### Bearing Cover Plug

REV 001



REV 000



ITEM	PART NUMBER	DESCRIPTION
<b>Revision 001</b>		
1	—	Plug
2	Not Used	Bonded Washer
<b>Revision 000</b>		
1	251160	Bearing Plug
2	235252	Bonded Washer

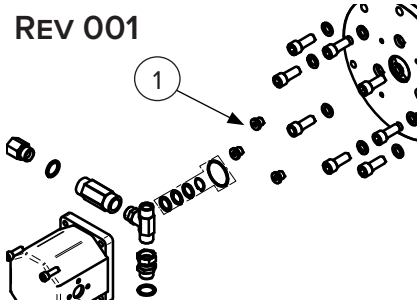
## 5. Parts

### 5.1 Differences Between Revisions Cont'd

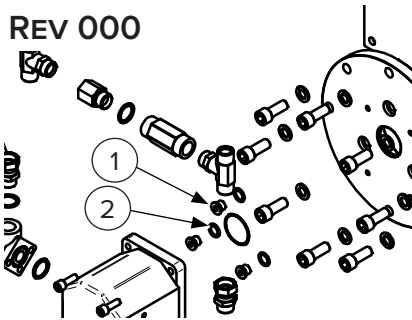
#### 151015 – C610

##### Bearing Cover Plug

###### REV 001



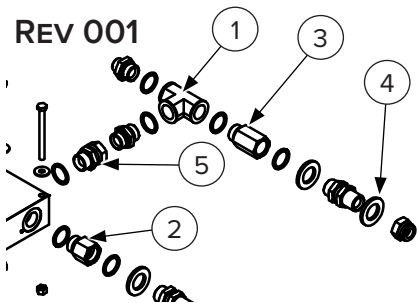
###### REV 000



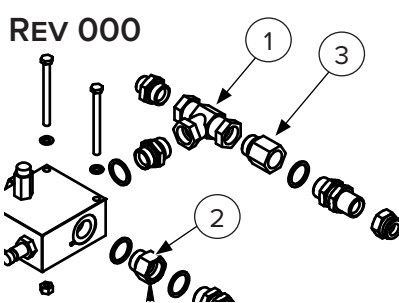
ITEM	PART NUMBER	DESCRIPTION
<b>Revision 001</b>		
1	236587	Plug
2	Not Used	Bonded Washer
<b>Revision 000</b>		
1	236585	Plug
2	236574	Bonded Washer

##### Valve Block Fittings

###### REV 001



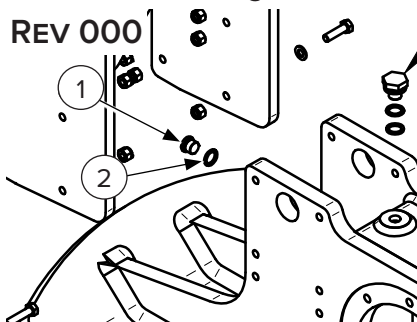
###### REV 000



ITEM	PART NUMBER	DESCRIPTION
<b>Revision 001</b>		
1	—	Coupling
2	—	Coupling
3	—	Coupling
4	—	Washer
5	—	Coupling
<b>Revision 000</b>		
1	—	Coupling
2	—	Coupling
3	—	Long Coupling
4	Not Used	Washer
5	Not Used	Coupling

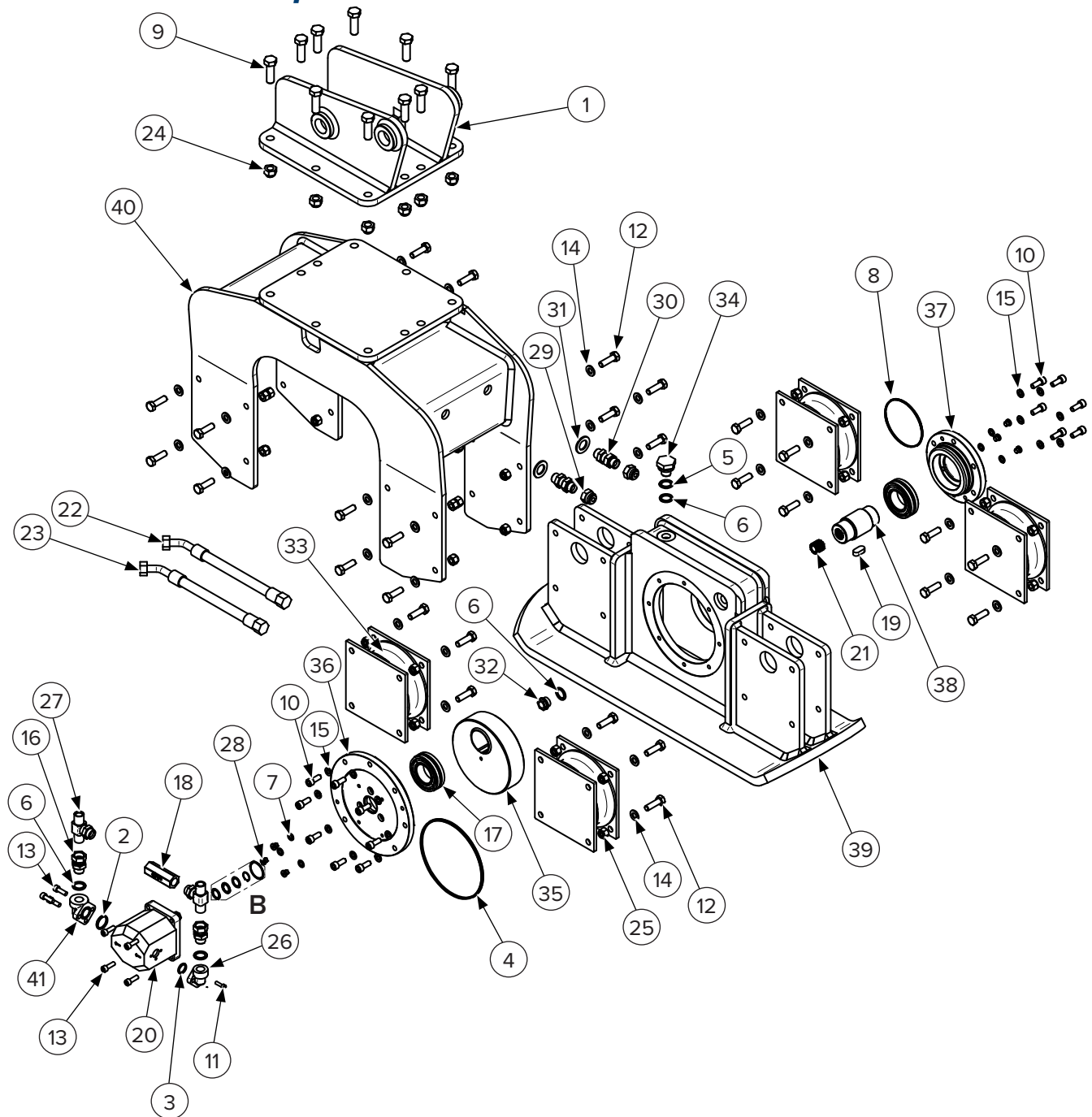
##### Internal Case Plug

###### REV 000



ITEM	PART NUMBER	DESCRIPTION
<b>Revision 000 Only</b>		
1	236589	Plug
2	235305	Bonded Washer

## 5.2 151005 Components



## 5. Parts

### 5.2 151005 Components Cont'd

ITEM	PART NUMBER	DESCRIPTION	QTY
1	Varies	Mount Plate (Blank Plate 251200)	1
B	251251	Motor Seal Kit	1
2	251253	Motor Hose O–Ring Seal	1
3	251120	Motor Small Flange Fitting O–Ring	1
4	251255	Base Plate O–Ring Seal	1
5	251355	Breather Plug O–Ring (Orange)	1
6	235305	Bonded Washer	4
7	236561	Bonded Washer	6
8	251122	Right Cover O–Ring	1
9	251163	Mount Bolt	10
10	251164	Right Cover Bolt	14
11	251165	Motor Small Flange Fitting Bolt	3
12	235266	M12 x 40 Bolt	32
13	251166	Motor Large Flange Fitting Bolt	7
14	251167	Washer for Vibration Damper	32
15	251168	Right Cover Washer	14
16	251123	Straight Fitting – Motor Fitting to Tee Fitting	2
17	251124	Bearing	2
18	251125	Valve	1
19	251126	Guide	1
20	251250	Motor	1
21	251127	Gear Component	1
22	251128	Motor to Bulkhead Supply Hose	1
23	251129	Motor to Bulkhead Return Hose	1
24	251169	Mount Nut	10
25	235267	M12 Nylock Nut	32
26	251130	Motor Flange Fitting – Supply Side	1
27	251131	Tee Fitting for H–Valve	2
28	251132	Plug	6
29	235320	Hose Connection End Plug	2
30	251133	Bulkhead Adapter	2
31	—	Washer	2



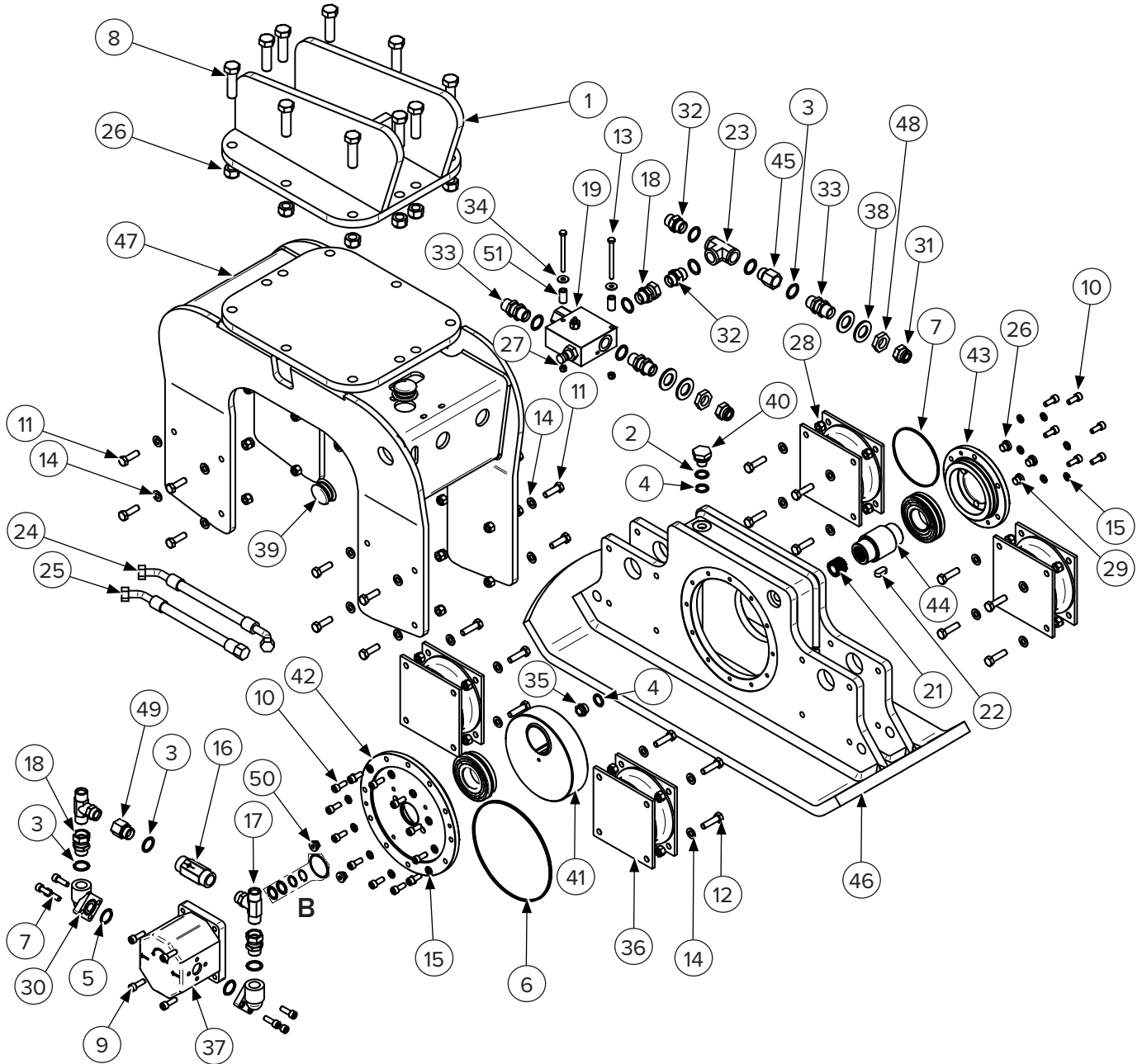
## 5. Parts

### 5.2 151005 Components Cont'd

ITEM	PART NUMBER	DESCRIPTION	QTY
32	251134	Oil Level Indicator	1
33	251115	Vibrating Damper	4
34	251354	Filter Tap	1
35	Not Available	Excentric Mass	1
36	Not Available	Left Cover	1
37	Not Available	Right Cover	1
38	Not Available	Shaft	1
39	Not Available	Internal Case	1
40	Not Available	External Case	1
41	251141	Motor Flange Fitting – Return Side	1

## 5. Parts

### 5.3 151010 Components



## 5. Parts

### 5.3 151010 Components Cont'd

ITEM	PART NUMBER	DESCRIPTION	QTY
1	Varies	Mount Plate (Blank Plate 251205)	1
B	251105	Motor Seal Kit	1
2	251355	Breather Plug O-Ring (Orange)	1
3	235352	3/4" Bonded Washer for Hose Connection	10
4	235305	Bonded Washer Hose Connection Nipple	2
5	236539	O-Ring	2
6	251142	Motor Base Plate O-Ring Seal	1
7	251143	Right Cover O-Ring	1
8	251175	Mounting Plate Bolt	10
9	251170	Motor Flange Fitting Bolt	10
10	251164	Right Cover Bolt	18
11	235266	M12 x 40 Mount Plate Bolt	16
12	251171	Vibration Damper Bolt	16
13	251172	Valve Block Bolt	2
14	251167	Washer for Vibration Damper	32
15	251168	Right Cover Washer	18
16	251145	Valve	1
17	251146	Tee Fitting for H-Valve for Supply Side	2
18	251147	Straight Fitting – Motor Fitting to Tee Fitting	3
19	251149	Valve Block	1
20	251150	Bearing	2
21	251110	Gear Link 35 x 31	1
22	251126	Guide	1
23	251353	Coupling – Valve Tee	1
24	251151	Motor to Bulkhead Supply Hose	1
25	251152	Motor to Bulkhead Return Hose	1
26	—	Nut	10
27	251173	Valve Block Nut	2
28	235267	Mount Plate Nylock Nut M12	32
29	236587	Plug	3
30	251153	Motor Flange Fitting	2

## 5. Parts

### 5.3 151010 Components Cont'd

ITEM	PART NUMBER	DESCRIPTION	QTY
31	235362	Plug	2
32	235124	Nipple	2
33	251350	Valve Bulkhead Adapter	3
34	251174	Block Washer	2
35	251134	Oil Level Indicator	1
36	251115	Vibrating Damper	4
37	251154	Hydraulic Motor	1
38	—	Washer	4
39	236609	Plug	2
40	251354	Breather Plug	1
41	Not Available	Excentric Mass	1
42	Not Available	Left Cover	1
43	Not Available	Right Cover	1
44	Not Available	Shaft	1
45	251351	Coupling for Outer Branch of Tee Valve	1
46	Not Available	Internal Case	1
47	Not Available	External Case	1
48	—	Nut	2
49	—	Coupling	1
50	—	Plug	2
51	—	Spacer Valve	2

## 5.4 151015 Components



## 5. Parts

### 5.4 151015 Components Cont'd

ITEM	PART NUMBER	DESCRIPTION	QTY
1	Varies	Mount Plate (Blank Plate 251210)	1
B	251106	Motor Seal Kit	1
2	251355	Breather Plug O-Ring (Orange)	1
3	235352	3/4" Bonded Washer for Hose Connection	3
4	236534	1" Bonded Washer	8
5	235305	Bonded Washer Hose Connection Nipple	2
6	236539	O-Ring	2
7	251142	Motor Base Plate O-Ring Seal	1
8	251255	Motor Base Plate O-Ring Seal	1
9	—	Mounting Plate Bolt	14
10	251170	Motor Flange Fitting Bolt	10
11	—	Screw	14
12	251171	Vibration Damper Bolt	32
13	—	Screw	32
14	—	Screw	2
15	251167	Washer for Vibration Damper	64
16	—	Washer	14
17	251145	Valve	1
18	251146	Tee Fitting for H-Valve for Supply Side	2
19	251147	Straight Fitting – Motor Fitting to Tee Fitting	3
20	—	Valve	1
21	—	Bearing	2
22	251110	Gear Link 35 x 31	1
23	251126	Guide	1
24	—	Coupling	1
25	—	Motor to Bulkhead Supply Hose	1
26	—	Motor to Bulkhead Return Hose	1
27	—	Nut	14
28	—	Nut	2
29	235267	Mount Plate Nylock Nut M12	64
30	236587	Plug	6
31	251153	Motor to Flange Fitting	2



## 5. Parts

### 5.4 151015 Components Cont'd

ITEM	PART NUMBER	DESCRIPTION	QTY
32	236542	Plug	2
33	236545	Nipple	1
34	—	Bulkhead Adapter	2
35	—	Washer	2
36	251134	Oil Level Indicator	1
37	251115	Vibrating Damper	8
38	251102	Hydraulic Motor	1
39	—	Washer	4
40	236609	Plug	2
41	251354	Breather Plug	1
42	Not Available	Excentric Mass	1
43	Not Available	Left Cover	1
44	Not Available	Right Cover	1
45	Not Available	Shaft	1
46	—	Coupling	1
47	Not Available	Internal Case	1
48	Not Available	External Case	1
49	—	Coupling	1
50	235238	Adapter Fitting	2
51	—	Coupling	1
52	—	Coupling	1

# 5. Parts

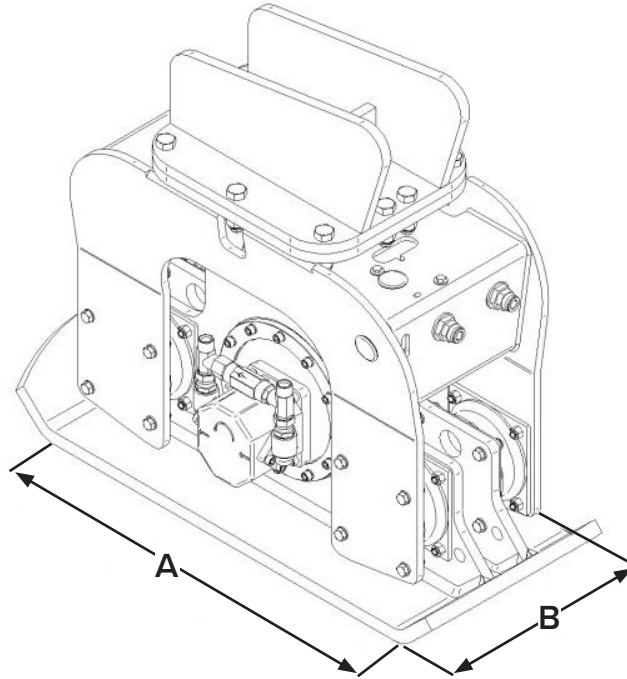
## 5.5 Safety Decals



ITEM	PART NUMBER	DESCRIPTION	QTY
1	BD-060	2.4375" x 3.375" Decal, Blue Diamond Attachments	1
2	BD-092	1.5" x 2.0" Decal, Warranty Registration QR	1
3	BD-123	3.0" x 3.0" Decal, High Pressure Fluid Hazard	1
4	BD-001	3.0" x 3.0" Decal, Read Owner's Manual	1

## 6. Specifications

### 6.1 Attachment Specifications



DESCRIPTION	151005	151010	151015
Excavator Weight	5,000 – 12,000 lbs (2.5 – 6 tons)	12,000 – 22,000 lbs (6 – 11 tons)	24,000 – 42,000 lbs (12 – 21 tons)
Attachment Weight (working conditions)	551 – 573 lbs (250 – 260 kg)	882 – 926 lbs (400 – 420 kg)	1,984 – 2,138 lbs (900 – 970 kg)
Compaction Area (Items A & B)	12 x 24 in. (300 x 600 mm)	16 x 32 in. (400 x 800 mm)	24 x 48 in. (600 x 1200 mm)
Frequency	35 Hz		
Power Output	18 kN	32 kN	35 kN
Minimum – Maximum Oil Flow (Optimum)	10 – 15 GPM (12) [40 – 60 L/min (45)]	15 – 23 GPM (19) [70 – 90 L/min]	29 – 44 GPM (34) [120 – 140 L/min]
Recommended Operating Pressure	2610 PSI (180 bar)		
Back Pressure from Excavator Pump	0 – 145 PSI (0 – 10 bar)		
Pressure Setting of the Hydraulic Relief Valve	2900 PSI (200 bar)		
Hydraulic Oil in the Vibrating Case (≈/-0.1 L)	0.55 L	0.75 L	1.5 L
Maximum Temperature in the Vibrating Case	176°F (80°C)		
Equipment Height without Adapting Plate	23 in. (585 mm)	25 in. (645 mm)	31 in. (780 mm)
Hydraulic Hose Connection	1/2" BSPP	3/4" BSPP	1" BSPP

## 6. Specifications

### 6.2 Torque Specifications

#### Torque Values

DESCRIPTION		151005	151010	151015
Cover Screws – Motor Flange	Size	M10 – 10.9		
	N•m (lbf•ft)	60 N•m (44 lbf•ft)		
Anti–Vibration Screws	Size	M12 8.8		
	N•m (lbf•ft)	80 N•m (60 lbf•ft)		
Adapting Plate Screws	Size	M16 8.8	M20 8.8	M24 8.8
	N•m (lbf•ft)	210 N•m (155 lbf•ft)	390 N•m (288 lbf•ft)	675 N•m (498 lbf•ft)

#### Optimal Environmental Working Conditions

DESCRIPTION		ALL MODELS
Temperature	°F (°C)	23 – 113°F (-5 – 45°C)
Humidity	%	40 – 90%

## 6. Specifications

### 6.3 Torque Specifications – Metric

#### Standard Hardware and Lock Nuts

BOLT TYPE	CLASS 4.8		CLASS 8.8 OR 9.8		CLASS 10.9		CLASS 12.9	
Size	Lubricated	Dry	Lubricated	Dry	Lubricated	Dry	Lubricated	Dry
M6	4.8 N•m	6 N•m	9 N•m	11 N•m	13 N•m	17 N•m	15 N•m	19 N•m
	3.5 lbf•ft	4.5 lbf•ft	6.5 lbf•ft	8.5 lbf•ft	9.5 lbf•ft	12 lbf•ft	11.5 lbf•ft	14.5 lbf•ft
M8	12 N•m	15 N•m	22 N•m	28 N•m	32 N•m	40 N•m	37 N•m	47 N•m
	8.5 lbf•ft	11 lbf•ft	16 lbf•ft	20 lbf•ft	24 lbf•ft	30 lbf•ft	28 lbf•ft	35 lbf•ft
M10	23 N•m	29 N•m	43 N•m	55 N•m	63 N•m	80 N•m	75 N•m	95 N•m
	17 lbf•ft	21 lbf•ft	32 lbf•ft	40 lbf•ft	47 lbf•ft	60 lbf•ft	55 lbf•ft	70 lbf•ft
M12	40 N•m	50 N•m	75 N•m	95 N•m	110 N•m	140 N•m	130 N•m	165 N•m
	29 lbf•ft	37 lbf•ft	55 lbf•ft	70 lbf•ft	80 lbf•ft	105 lbf•ft	95 lbf•ft	120 lbf•ft
M14	63 N•m	80 N•m	120 N•m	150 N•m	175 N•m	225 N•m	205 N•m	260 N•m
	47 lbf•ft	60 lbf•ft	88 lbf•ft	110 lbf•ft	130 lbf•ft	165 lbf•ft	150 lbf•ft	190 lbf•ft
M16	135 N•m	175 N•m	260 N•m	330 N•m	375 N•m	475 N•m	440 N•m	560 N•m
	100 lbf•ft	125 lbf•ft	195 lbf•ft	250 lbf•ft	275 lbf•ft	350 lbf•ft	325 lbf•ft	410 lbf•ft
M18	135 N•m	175 N•m	260 N•m	330 N•m	375 N•m	475 N•m	440 N•m	560 N•m
	100 lbf•ft	125 lbf•ft	195 lbf•ft	250 lbf•ft	275 lbf•ft	350 lbf•ft	325 lbf•ft	410 lbf•ft
M20	190 N•m	240 N•m	375 N•m	475 N•m	530 N•m	675 N•m	625 N•m	800 N•m
	140 lbf•ft	180 lbf•ft	275 lbf•ft	350 lbf•ft	400 lbf•ft	500 lbf•ft	460 lbf•ft	580 lbf•ft
M22	260 N•m	330 N•m	510 N•m	650 N•m	725 N•m	925 N•m	850 N•m	1075 N•m
	190 lbf•ft	250 lbf•ft	375 lbf•ft	475 lbf•ft	540 lbf•ft	675 lbf•ft	625 lbf•ft	800 lbf•ft
M24	330 N•m	425 N•m	650 N•m	825 N•m	925 N•m	1150 N•m	1075 N•m	1350 N•m
	250 lbf•ft	310 lbf•ft	475 lbf•ft	600 lbf•ft	675 lbf•ft	850 lbf•ft	800 lbf•ft	1000 lbf•ft
M27	490 N•m	625 N•m	950 N•m	1200 N•m	1350 N•m	1700 N•m	1600 N•m	2000 N•m
	990 lbf•ft	450 lbf•ft	700 lbf•ft	875 lbf•ft	1000 lbf•ft	1250 lbf•ft	1150 lbf•ft	1500 lbf•ft
M30	675 N•m	850 N•m	1300 N•m	1650 N•m	1850 N•m	2300 N•m	2150 N•m	2700 N•m
	490 lbf•ft	625 lbf•ft	950 lbf•ft	1200 lbf•ft	1350 lbf•ft	1700 lbf•ft	1600 lbf•ft	2000 lbf•ft
M33	900 N•m	1150 N•m	1750 N•m	2200 N•m	2500 N•m	3150 N•m	2900 N•m	3700 N•m
	675 lbf•ft	850 lbf•ft	1300 lbf•ft	1650 lbf•ft	1850 lbf•ft	2350 lbf•ft	2150 lbf•ft	2750 lbf•ft
M99	1150 N•m	1450 N•m	2250 N•m	2850 N•m	3200 N•m	4050 N•m	3750 N•m	4750 N•m
	850 lbf•ft	1075 lbf•ft	1650 lbf•ft	2100 lbf•ft	2350 lbf•ft	3000 lbf•ft	2750 lbf•ft	3500 lbf•ft

**This page intentionally  
left blank**





## Warranty

### MANUFACTURER'S LIMITED WARRANTY

BLUE DIAMOND® ATTACHMENTS, a manufacturer of quality attachments, warrants new BLUE DIAMOND® ATTACHMENTS products and/or attachments at the time of delivery to the original purchaser, to be free from defects in material and workmanship when properly set up and operated in accordance with the recommendations set forth by BLUE DIAMOND® ATTACHMENTS, LLC.

BLUE DIAMOND® ATTACHMENTS liability for any defect with respect to accepted goods shall be limited to repairing the goods at a BLUE DIAMOND® ATTACHMENTS designated location or at an authorized dealer location, or replacing them, as BLUE DIAMOND® ATTACHMENTS shall elect. The above shall be in accordance with BLUE DIAMOND® ATTACHMENTS warranty adjustment policies. BLUE DIAMOND® ATTACHMENTS obligation shall terminate twelve (12) months for the Plate Compactor after the delivery of the goods to original purchaser.

This warranty shall not apply to any machine or attachment which shall have been repaired or altered outside the BLUE DIAMOND® ATTACHMENTS factory or authorized BLUE DIAMOND® ATTACHMENTS dealership or in any way so as in BLUE DIAMOND® ATTACHMENTS judgment, to affect its stability or reliability, nor which has been subject to misuse, negligence or accident beyond the company recommended machine rated capacity.

### WARRANTY CLAIM

To submit a warranty claim, a claim must be filed with BLUE DIAMOND® ATTACHMENTS before work is performed. The BLUE DIAMOND® PRODUCT SUPPORT TEAM will advise repairs and applicable parts exchanges. Tampering with the failed part may void the warranty. This warranty does not include freight or delivery charges incurred when returning machinery for servicing. Dealer mileage, service calls, and pickup/delivery charges are the customers' responsibility.

### EXCLUSIONS OF WARRANTY

Except as otherwise expressly stated herein, BLUE DIAMOND® ATTACHMENTS makes no representation or warranty of any kind, expressed or implied, AND MAKES NO WARRANTY OF MERCHANTABILITY IN RESPECT TO ITS MACHINERY AND/OR ATTACHMENTS ARE FIT FOR ANY PARTICULAR PURPOSE. BLUE DIAMOND® ATTACHMENTS shall not be liable for incidental or consequential damages for any breach or warranty, including but not limited to inconvenience, rental of replacement equipment, loss of profits or other commercial loss. Upon purchase, the buyer assumes all liability for all personal injury and property resulting from the handling, possession, or use of the goods by the buyer.

No agent, employee, or representative of BLUE DIAMOND® ATTACHMENTS has any authority to bind BLUE DIAMOND® ATTACHMENTS to any affirmation, representation, or warranty concerning its machinery and/or attachments except as specifically set forth herein.

This warranty policy supersedes any previous documents. Please see [bluediamondattachments.com/warranty-policies](http://bluediamondattachments.com/warranty-policies) for the most up to date warranty information.

**NOTE:** Blue Diamond® Attachments is a trademark of BLUE DIAMOND® ATTACHMENTS



**QUALITY | DEPENDABILITY | INTEGRITY**

Blue Diamond® Attachments  
4512 Anderson Road, Knoxville, TN 37918  
888-376-7027