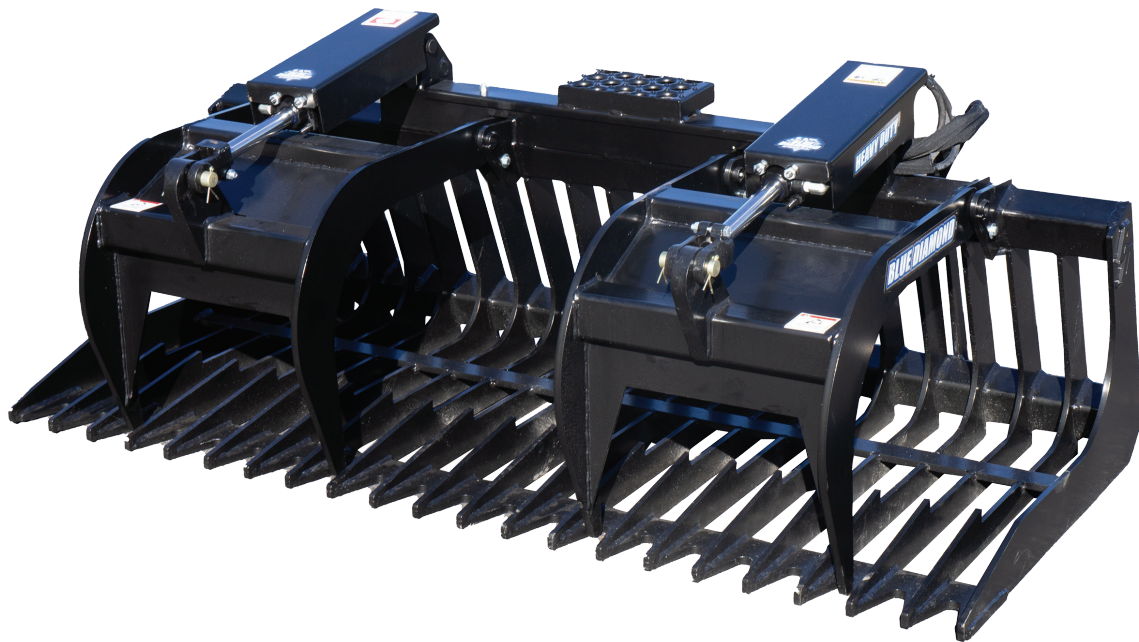


Heavy Duty Rock Bucket Grapples

Operation and Maintenance Manual



Register your
WARRANTY
within 30 days
of purchase



888-376-7027 | BlueDiamondAttachments.com

Introduction: Owner Information

Thank you for your decision to purchase a Blue Diamond® Heavy Duty Rock Bucket Grapple. To ensure maximum performance of your equipment, it is mandatory that you thoroughly study the Operator's Manual and follow the recommendations. Proper operation and maintenance are essential to maximize equipment life and prevent personal injury.

Operate and maintain this equipment in a safe manner and in accordance with all applicable local, state, and federal codes, regulations, and /or laws. Follow all on-product labeling and instructions.

Make sure that all personnel have read this Operator's Manual and thoroughly understand safe and correct operating, installation and maintenance procedures.

Blue Diamond® is continually working to improve its products. Blue Diamond® reserves the right to make any improvements or changes as deemed practical and possible without incurring any responsibility or obligation to make any changes or additions to equipment sold previously.

Although great care has been taken to ensure the accuracy of this publication, Blue Diamond® makes no warranty or guarantee of any kind, written or expressed, implied or otherwise with regard to the information contained within this manual. Blue Diamond® assumes no responsibility for any errors that may appear in this manual and shall not be liable under any circumstances for incidental, consequential or punitive damages in connection with, or arising from the use of this manual.

Keep this manual available for frequent reference. All new operators or owners must review the manual before using the equipment and annually thereafter. Contact your Blue Diamond® Attachments Dealer for assistance, information, or additional copies of the manual. Contact www.bluediamondattachments.com or call 888-376-7027 for a complete list of dealers in your area.

Serial Number Location:

Please record attachment information in the space provided for future reference.



Model Number: _____

Serial Number: _____

Dealer Name: _____

Dealer Number: _____

Date of Purchase: _____

The serial number plate is located on the back of the frame to the right of the mounting plate as shown above.

Always use your serial number when requesting information or when ordering parts.

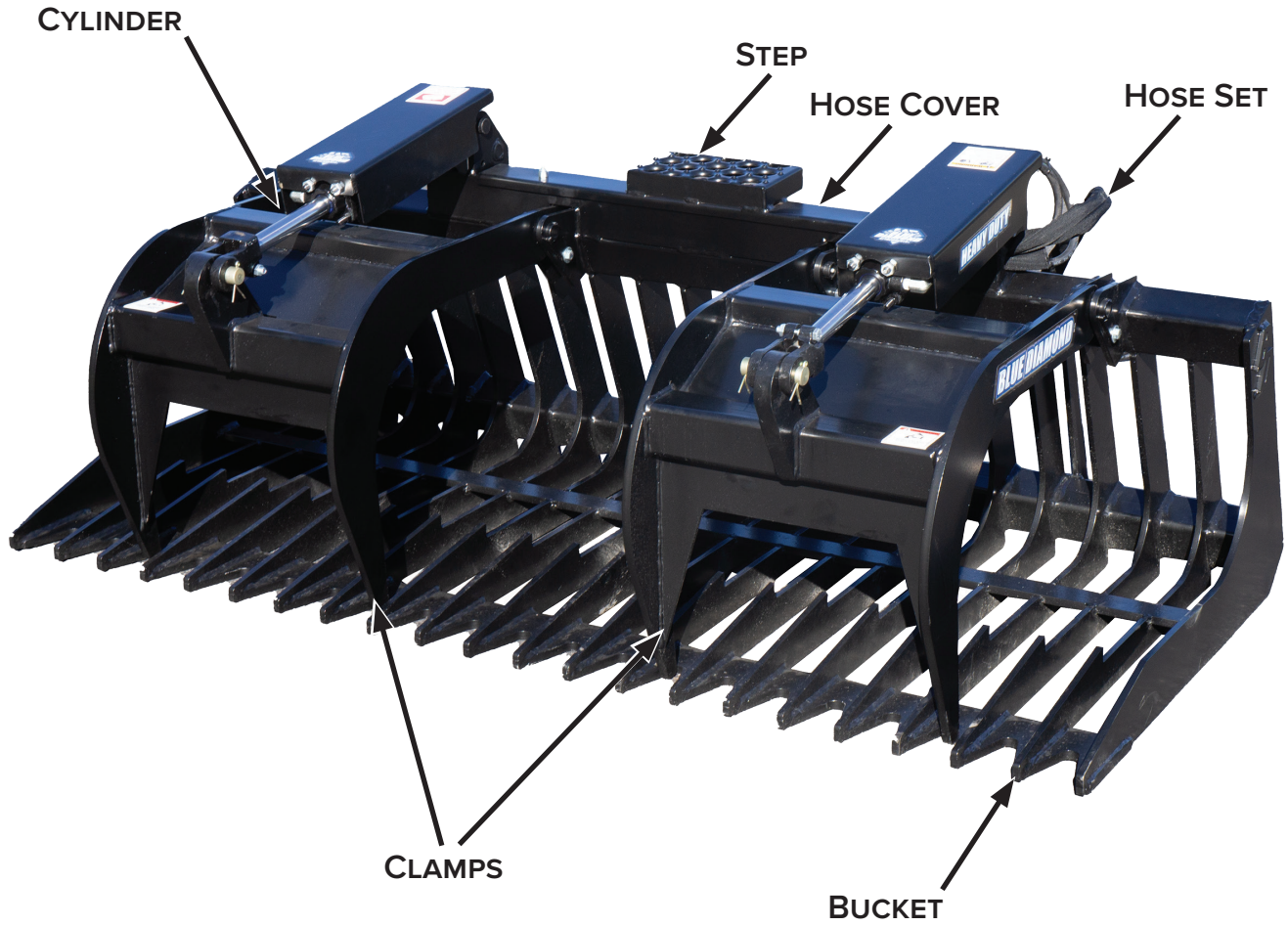
NOTE: The directions left, right, front, and rear, as mentioned throughout this manual, are as viewed from the operator's position.

Table of Contents

Introduction: Owner Information	2
1. Introduction.....	4
1.1 Attachment Identification	4
1.2 About this Attachment	5
1.3 Attachment Model Numbers	5
2. Safety	6
2.1 General Safety Information	6
2.2 Operators	7
2.3 Safety Guidelines	8
3. Operation	10
3.1 Pre-Operation Inspection	10
3.2 Entering & Exiting the Prime Mover	11
3.3 Attachment Installation	11
3.4 Operating the Attachment	13
3.5 Operating Tips	14
4. Maintenance	16
4.1 Service Schedule	16
4.2 Before Each Use	17
4.3 After Every Season	17
4.4 Lubrication Points	17
4.5 Storage	18
4.6 Troubleshooting	19
5. Parts.....	20
5.1 Heavy Duty Series 1 Components	20
5.2 Heavy Duty Series 2 Components	22
5.3 Safety Decals	24
6. Specifications	25
6.1 Attachment Specifications	25
6.2 Torque Specifications – Imperial	26
Warranty	27

1. Introduction

1.1 *Attachment Identification*



1. Introduction

1.2 About this Attachment

About the Heavy Duty Rock Bucket Grapple Attachment

The Rock Bucket Grapple attachment is intended for use in industrial and landscaping applications. The primary use of the grapple attachment includes demolition, construction, recycling, scrap, and grounds maintenance. Use of this equipment in any other manner is considered to be contrary to the intended use of the attachment.

Heavy Duty Rock Bucket Grapple

The Rock Bucket Grapple attachment is vital to multiple industries, such as construction and forestry, and is quickly becoming a necessity among all contractors today. This unique attachment is offered in a variety of sizes for a variety of applications.

The Rock Bucket Grapple combines the loading, leveling, and sifting actions of a skid steer rock bucket with the “grabbing ability” of one or two hydraulic clamps. The basic design allows it to load and grapple large and/or uneven objects. The leading edge acts as a land plane to skim off high spots, and the rear cross bar smooths the loose soil left behind. The bucket is also designed to sift out large debris and allow the smallest material to fall through. A drop down on each tine keeps large material from sliding out the front of the bucket.

The Rock Bucket Grapples feature enclosed cylinders and hoses on most models to protect against debris and stray limbs. The depth of the bucket has been increased, giving it a large loading capacity.

1.3 Attachment Model Numbers

The following tables do not reflect the different mount or clamp options. Please contact your local Blue Diamond® dealer for more information.

MODEL NUMBERS	MODEL TYPE	WIDTH
108330*	Heavy Duty	66"
108345*	Heavy Duty	72"
108360*	Heavy Duty	78"
108380*	Heavy Duty	84"
108332	Heavy Duty Series 2	66"
108347	Heavy Duty Series 2	72"
108362	Heavy Duty Series 2	78"
108382	Heavy Duty Series 2	84"

*Discontinued Models.

2. Safety

2.1 General Safety Information



SAFETY ALERT SYMBOL



This **SAFETY ALERT SYMBOL** identifies important safety messages on the equipment and in the owner's manual. When you see this symbol, be alert to the possibility of personal injury and carefully read the message that follows.



IMPORTANT



The signal word **IMPORTANT** identifies procedures which must be followed to avoid damage to the machine.



DANGER



The signal word **DANGER** on the machine and in the manuals indicates a hazardous situation which, if not avoided, will result in death or serious injury.



WARNING



The signal word **WARNING** on the machine and in the manuals indicates a potentially hazardous situation which, if not avoided, could result in death or serious injury.



CAUTION



The signal word **CAUTION** on the machine and in the manuals indicates a potentially hazardous situation which, if not avoided, may result in minor or moderate injury. It may also be used to alert against unsafe practices.

NOTE: Notes are used to indicate important information. This information may be repeated in other areas of the manual.

Terminology

Host Machine, Machine, Prime Mover:

- The Heavy Duty Rock Bucket Grapple can be attached to many different pieces of equipment; therefore, the terms “host machine”, “machine”, and “prime mover” will be used. Host machine, machine, and prime mover mean any vehicle, tractor, or skid steer providing power to the attachment.

Attachment, Implement, Equipment:

- The Heavy Duty Rock Bucket Grapple is the tool that is being attached to the host machine; therefore, the terms “attachment”, “implement”, and “equipment” will be used. The attachment, implement, and equipment mean any tool that is being used on any vehicle, tractor, or skid steer being used for different applications.

Operating Safety

- Read and follow instructions in this manual and the machine's Operator's Manual before operating.
- The manual must always remain with the machine. In case of loss or damage, request a new copy from your dealer or from Blue Diamond®.
- Only qualified and trained operators should operate, maintain, and service this attachment. See “Qualified Operators” on page 7 to determine a qualified operator.
- Strictly follow all rules prescribed by the safety pictograms/decals applied to the machine. Ensure that all safety pictograms/decals are legible. If pictograms/decals are worn, they must be replaced with new ones obtained from Blue Diamond® and placed in the position indicated by this manual.
- Before using the machine, make sure that all safety devices are installed and in good working condition. In case of damaged or missing shields, replace them immediately.
- It is absolutely forbidden to remove or alter safety devices and / or safety precautions
- Pay maximum attention to avoid any accidental contact with rotating parts of the machine.

2. Safety

2.1 General Safety Information Cont'd

Operating Safety Cont'd

- If the use of the machine is required at night or in conditions of reduced visibility, use the lighting system of the host machine and an auxiliary lighting system if required.

2.2 Operators

Qualified Operators

The operator is a person suited to the work and who is physically and psychologically able to withstand the demands connected with operating the equipment for its intended use. The operator must not allow anyone to approach the machine while it is working and must not allow external personnel to operate the machine or attachment.

The operator is to follow the given instructions in this manual and the machine operator's manual in order to obtain maximum performance, minimal fuel consumption, and maximum safety for himself and for others.

The operator is responsible for scrupulously observing all the instructions given in this manual.



DANGER



Operators must receive instructions before operating the machine. Untrained operators can cause serious injury or death.

For an operator to be qualified, he or she must not use drugs or alcoholic drinks which impair alertness or coordination while working. An operator who is taking prescription drugs must get medical advice to determine if he or she can safely operate a machine and the equipment. For an operator to be qualified, he or she must have read and understood the instructions of this manual, he or she must make adequate preparation for the proper use of the machine, and he or she must hold a driving license.

In case of doubt regarding the use of the machine and/or the interpretation of this manual, the operator must contact either their dealer or Blue Diamond®.

Operator Training

- Check the rules and regulations at your location. The rules may include an employer's work safety requirements. Regulations may apply to local driving requirements or use of a Slow Moving Vehicle (SMV) emblem. Regulations may identify a hazard such as a utility line.
- The new operator must start in an area without bystanders and use all the controls until he or she can operate the machine safely under all conditions of the work area.

Operator Safety

- It is the responsibility of the operator to follow all local, state, and federal safety regulations. Improper use of this equipment may result in personal injury, property damage, and/or damage to the equipment.
 - Before starting and during operation of the attachment, make sure there are no people or animals in the operation area.
 - During operation, adjustment, maintenance, repairing, or transportation of the machine, the operator must always use appropriate Personal Protective Equipment (PPE) including but not limited to safety glasses, working gloves, dust-mask, safety helmet, and hearing protection.
- NOTE:** Additional safety equipment may be required depending on the operating environment and worksite conditions.
- Do not operate the attachment or machine while wearing loose fitting clothing that can be entangled or caught in parts of the machine.
 - Do not operate the implement when tired, not in good condition, or under the influence of alcohol or drugs.

2. Safety

2.3 Safety Guidelines

Operating Safety

- Read and follow instructions in this manual and the machine's Operator's Manual before operating.
- Under no circumstances should young children be allowed to work with this equipment.
- This equipment is dangerous to persons unfamiliar with its operation.
- Check for overhead and / or underground lines before operating equipment (if applicable).
- In addition to the design and configuration of equipment, hazard control and accident prevention are dependent upon the awareness, concern, prudence, and proper training of personnel involved in the operation, transport, maintenance, and storage of equipment.
- Check that the attachment is securely fastened to the machine.
- Make sure all the machine controls are in the NEUTRAL before starting the machine.
- Operate the equipment only from the operator's position.
- Operate the equipment according to the Operator's Manual.
- When learning to operate the equipment, do it at a slow rate in an area clear of bystanders.
- Do not permit personnel to be in the work area when operating the equipment.
- The equipment must be used ONLY on approved machines.
- Do not modify the equipment in any way. Unauthorized modification may impair the function and / or safety and could affect the life of the equipment.
- Do not make any adjustments or repairs on the equipment while the machine is running.
- Keep shields and guards in place. Replace if damaged.

- DO NOT operate equipment in poor visibility conditions such as fog, darkness, or any conditions that limit clear visibility less than 300 feet (100 m) in front of and to the sides of the equipment.
- DO NOT operate in a work area that has not been inspected for foreign debris and obstacles.
- Remove any foreign objects and clearly mark any objects that cannot be removed.
- Wear safety glasses, gloves, hearing protection, and other protective clothing when required.

Machine Requirements and Capabilities

- The Heavy Duty Rock Bucket Grapple must be connected to a machine with adequate horsepower and lift capacity to provide satisfactory results.
- The machine must be equipped with an auxiliary circuit that is available on the loader arms and is controlled by a switch, pedal, or handle while in the operator's position.
- Keep bystanders clear of moving parts and the work area. Keep children away.
- Do not exceed maximum HP or maximum PSI operating pressure as stated for each model in "6.1 Attachment Specifications" on page 25.
- Use caution on slopes and near banks and ditches to prevent overturn.

Fire Prevention Safety

- Flammable debris (leaves, grass, etc.) must be removed regularly. If flammable debris is allowed to accumulate, it can cause a fire hazard. Clean often to avoid this accumulation.
- All fuels, most lubricants, and some coolant mixtures are flammable. Flammable fluids that are leaking or spilled onto hot surfaces or onto electrical components can cause a fire.

2. Safety

2.3 Safety Guidelines Cont'd

Transporting Safety

- Comply with state and local laws governing highway safety and movement of machinery on public roads.
- Check local laws for all highway lighting and marking requirements.
- Always yield to oncoming traffic and move to the side of the road so any following traffic may pass.
- Never allow riders on either machine or equipment.
- If transporting the equipment on a truck or trailer, make sure the equipment is properly secured to the transport vehicle.

Hydraulic System

- Check hydraulic tubes, hoses, and fittings for damage and leakage. Never use open flame or bare skin to check for leaks. Hydraulic tubes and hoses must be properly routed and have adequate support and secure clamps. Tighten or replace any parts that show leakage.
- Always clean fluid spills. Do not use gasoline or diesel fuel for cleaning parts. Use commercial nonflammable solvents.

Personal Protective Equipment



Proper Work Clothes: To help ensure your safety as a designated operator wear proper work clothes including tight fitting clothes, protective gloves, and shoes.



Hand Protection: To help ensure your safety as a designated operator wear protective gloves.



Protective Shoes: To help ensure your safety as a designated operator wear protective shoes.



Safety Helmet: To help ensure your safety as a designated operator wear a safety helmet.



Safety Helmet and Eye/Ear Protection: To help ensure your safety as a designated operator wear a safety helmet and eye/ear protection.

3. Operation

3.1 Pre–Operation Inspection

Before operating the Heavy Duty Rock Bucket Grapple for the first time and each time thereafter, use the following list as a guideline during equipment inspection.



WARNING



AVOID SERIOUS INJURY OR DEATH

- Disengage machine's auxiliary hydraulics, engage the machine's parking brake, stop the engine, and make sure all moving parts are completely stopped before connecting, disconnecting, adjusting, or cleaning equipment.
- Always keep shields and guards in place when using the equipment.
- Disengage machine's auxiliary hydraulics for road travel.
- Keep hands, feet, and clothing away from rotating parts.

- Lubricate the attachment per the schedule outlined in the Maintenance section. See "4.3 After Every Season" on page 17.
- Check the attachment's mounting frame for damage or cracks.
- Check that all shields and guards are in place.
- Check for loose bolts and tighten them if necessary.
- Check all welds on the attachment for wear and damage each time the attachment is removed from the machine.
- Make sure tines on the clamp(s) and the bucket itself are not bent or worn.
- Check for damaged or missing safety decals. Replace if necessary.
- Inspect the machine's mounting frame. (See the machine's Operator's Manual for inspecting the mounting frame.) Replace any parts that are damaged, bent, or missing. Keep all fasteners tight. Look for cracked welds.
- Verify that the attachment is properly connected to the machine.



WARNING



Leaking fluids under pressure can enter the skin and cause serious injury or death. Immediate medical attention is required.

Wear goggles. Use cardboard to check for leaks.

- Check the condition of all hydraulic components for leaks. Repair as required.
NOTE: Do not operate with hydraulic leaks.
- Inspect the work area, confirm that it is free of any utilities, rocks, fence posts, and mark any objects that cannot be moved.
- Determine a safe and efficient duty cycle pattern before starting the job.

3. Operation

3.2 Entering & Exiting the Prime Mover



See the machine's Operator's Manual for detailed information on operating the loader.

Entering The Operator's Position

Use the attachment safety treads, handles, and / or steps (on the machine) to enter the operator's position. Always maintain three (3) points of contact.

When in the operator's position, secure the seatbelt, lower safety seat bar, start the engine, and release the parking brake.

Leaving The Operator's Position



AVOID SERIOUS INJURY OR DEATH

- Always park on a flat, level surface.
- Lower lift arms and place attachment flat on the ground.
- Place all controls in **NEUTRAL**.
- Engage the parking brake.
- Stop the engine, and remove the key.
- Wait for all moving parts to stop.

SEE MACHINE'S OPERATOR'S MANUAL FOR ADDITIONAL INFORMATION.

Park the machine / attachment on a flat, level surface.

Place all controls in neutral, engage the parking brake, stop the engine, and wait for all moving parts to stop. Leave the operator's position.

3.3 Attachment Installation

Connecting Attachment to the Machine



CRUSH HAZARD

- Before moving the machine, look in all directions and make sure no bystanders, especially small children are in the work area. Do not allow anyone between the machine and attachment when approaching the attachment for connecting.
- Keep fingers and hands out of pinch points when connecting and disconnecting the attachment.

Before connecting to the attachment, inspect the machine's mounting plate. (See the machine's Operator's Manual for inspecting the mounting frame.)

Enter the operator's position. See "Entering The Operator's Position" on page 11.

Drive the machine slowly forward until the top edge of the machine's mounting plate is under the top flange of the attachment mounting frame.

Slowly tilt the machine's mounting plate back until the attachment's mounting frame fully contacts the front of the machine's mounting plate.

Leave the operator's position. See "Leaving The Operator's Position" on page 11.

3. Operation

3.3 Attachment Installation Cont'd

Connecting Attachment to the Machine Cont'd



WARNING



AVOID SERIOUS INJURY OR DEATH

The locking pins / wedges must extend through the holes in the attachment mounting frame. Failure to secure locking pins / wedges can allow attachment to come off.

SEE MACHINE'S OPERATOR'S MANUAL FOR ADDITIONAL INFORMATION.

Engage attachment locking levers / wedges (See the machine's Operator's Manual for detailed information).

Connecting Hydraulic Hoses



IMPORTANT



Thoroughly clean the quick couplers before making connections. Dirt can quickly damage the hydraulic system.

Verify that all hydraulic couplings are compatible with the host machine.

Remove dirt or debris from the male and female couplers. Visually inspect the couplers for corroding, cracking, damage, or excessive wear. Replace as needed.

Connect the attachment hydraulic hoses to the host machine. Pull on each hose to verify full connection is made.

Disconnecting Hydraulic Hoses



WARNING



AVOID SERIOUS INJURY OR DEATH

Hydraulic fluid, tubes, fittings, and quick couplers can get hot during operation. Be careful when connecting and disconnecting hydraulic hoses.

Relieve auxiliary hydraulic pressure. (See the host machine's Operator's Manual for correct procedure.)

Disconnect attachment hydraulic hoses from the machine.

Disconnecting Attachment From the Machine

Relieve auxiliary hydraulic pressure. (See the machine's Operator's Manual for correct procedure.)

Park the machine and attachment on a flat, level surface. Lower the attachment flat on the ground.

Leave the operator's position. See "Leaving The Operator's Position" on page 11.

Disconnect attachment hydraulic hoses from the machine.

Disengage locking pins / wedges. (See the machine's Operator's Manual for correct procedure.)

Enter the operator's position. See "Entering The Operator's Position" on page 11.

Slowly tilt the machine's mounting plate forward until the attachment's mounting frame is free from the machine's mounting plate.

Drive the machine slowly backward, away from the attachment.

3. Operation

3.4 Operating the Attachment

Machine Requirements



WARNING



Never allow riders on the attachment.

Only use the attachment on compatible loaders.

Refer to the machine's Operator's Manual for flow and pressure specifications.

Refer to the machine's Operator's Manual for instructions on how to open and close the clamp(s) as well as height and tilt functions of the machine's arms.

Engaging the Attachment for the First Time



IMPORTANT



If this is the initial startup with this attachment on this machine, check the host machine's hydraulic oil level and add oil, if necessary, before and after doing steps 1–2 below.

After starting the machine, lift the attachment 10" (254 mm) off the ground surface:

1. With the machine's engine RPMs just above idle, slowly engage the auxiliary hydraulics to open the clamp(s). With the machine's RPMs just above idle, slowly engage the auxiliary hydraulics to open the clamp. Move the auxiliary control pedal, lever, or switch in the opposite direction to close the clamp. Repeat this three (3) times to purge any air from the system.
2. Lower the attachment to the ground and shut off the host machine's engine. Leave the operator's position. See "Leaving The Operator's Position" on page 11.
3. Check the machine's hydraulic oil level, and add oil if necessary.
4. Inspect the attachment's hydraulic system for any noticeable leaks. If leaks are present, correct before continuing operation.

Getting Familiar with the Attachment



DANGER



Never operate the grapple arms when bystanders are within 10 ft (3 m) of the work area.



CAUTION



AVOID INJURY

Be cautious when operating on uneven ground surfaces. A machine rollover could result in minor or serious injury. Always wear your seatbelt when operating this type of machinery.

Before starting the engine with the grapple attachment connected to the host machine, make sure you are familiar and comfortable with the operation of the auxiliary hydraulic controls as outlined in the previous sections of this manual and in the machine's Operator's Manual.

When operating the grapple attachment, set the host machine throttle at a speed that will produce the required flow to the attachment and other machine functions. If the machine is equipped with a foot throttle, use it to control the engine speed and power being delivered to the attachment. Refer to the machine's Operator's Manual or call your local dealer for additional help if necessary.

At the start, learn what the attachment looks like in a level position when in the operator's position.

The correct ground speed for this attachment depends on the application and conditions, which can be monitored by sound and feel depending on the material density. If the machine's engine is bogging down because of a heavy load, raise or decrease the load a little at a time until the machine's power can overcome the material load on the attachment.

3. Operation

3.4 Operating the Attachment Cont'd

Operating the Heavy Duty Rock Bucket Grapple



WARNING



AVOID SERIOUS INJURY OR DEATH

Use extreme caution when moving debris to keep them hitting yourself or bystanders.

1. Install the attachment onto the host machine. (See “Connecting Attachment to the Machine” on page 11.)
2. Enter the operator’s position. (See “Entering The Operator’s Position” on page 11.)
3. Raise the attachment slightly off the ground.
4. Cycle the Rock Bucket Grapple’s cylinder(s) several times to purge the hydraulic system of air. (See the machine’s Operator’s Manual for precise instructions in regards to these functions.)
5. To pick up debris, fully open the clamp(s) and drive forward. The debris should be pushed to the back of the attachment and resting on the bottom of the bucket.
6. Cycle the cylinder(s) to close the clamp(s).
7. Use the machine to adjust the height of the attachment. The machine’s tilt cylinders can be used to level the attachment.
8. When done handling debris, close the Rock Bucket Grapple to prevent serious injury or death.

3.5 Operating Tips



CAUTION



AVOID INJURY

Be cautious when operating on uneven ground surfaces. A machine rollover could result in minor or serious injury. Always wear your seatbelt when operating this type of machinery.

- Always inspect the work area before starting the job. Locate and mark any utilities, steel posts, rocks, or any objects that could be damaged or damaged the attachment during operation. Never assume the work area is safe. Never skip Pre–Operation Inspection (see page 10).
- Operate at a safe, slow–paced speed that will allow proper vigilance for the area ahead and behind the machine and attachment. Look behind the attachment / machine and use your mirror when in reverse. Verify that the machine’s backup alarm is in proper working condition to warn others when in reverse in addition to proper vigilance.
- Overloading the attachment will result in spinning the tracks or tires and will make unwanted ruts. If a load is lifted that is too heavy with the Rock Bucket Grapple, it will raise the rear of the host machine and reduce the tractive power available to move the load.
- Overloading the attachment will also require raising the attachment to offload some of the material. When the attachment is raised, an uneven surface is created will increase as the front of host machine drives over the rise of the ground surface.
- Center the load on the attachment. Estimate the center, and lift it accordingly. If the load feels unbalanced when lifted, stop the host machine, lower the load, and reposition. Try lifting again afterwards. An unbalanced load can overturn the host machine.

3. Operation

3.5 Operating Tips Cont'd

- After loading the attachment and closing the clamp(s) onto the load, roll the attachment back and retighten the clamp pressure. When rolling back the attachment, the load will settle and require some additional clamp pressure to secure the load.



WARNING



AVOID SERIOUS INJURY OR DEATH

When lifting a load of brush or trees, make sure all ends are not tangled with standing trees that could cause the center of gravity to be compromised, resulting in a rollover that could cause serious injury or death.

- The attachment's clamp(s) should not be used for pushing or pulling down trees or any type of structure. The clamp's purpose is to clamp the load so it can be moved to a different spot on the jobsite.
- To avoid service work and downtime, always pay attention so that tree branches or roots do not extend through past the attachment arms and damage any hydraulic parts or enter the cab area.
- Be careful that a branch or root doesn't "whip" back at the host machine. Wear safety glasses to protect your eyes from dirt and debris.



WARNING



AVOID SERIOUS INJURY OR DEATH

Use extreme caution when working around low hanging electrical lines. Do not raise the attachment in an area where there are low electrical lines to prevent an accident that could result in serious injury or death.

- Maintain distance from any type of utility, whether underground or overground.
- Always clean the quick couplers before connecting them to the host machine. Use plastic or metal caps to protect the ends when not in use. Tuck the hoses somewhere in the attachment where they will be kept clean and not driven over.

4. Maintenance

4.1 Service Schedule

DESCRIPTION	SERVICE PROCEDURES					
	Check	Clean	Lube	Change	Adjust	Drain
Daily Maintenance (or every 8 hours)						
Hydraulic Fittings	•					
Hydraulic Hoses	•					
Frame (cracks, bends, or excessive damage)	•	•				
Hydraulic Cylinders	•					
Shields and Guards	•					
Attachment Welds	•					
Safety Decals	•					
Clamp or Bucket Tines Bent or Worn	•					
Grease Fittings			•			

4. Maintenance

4.2 Before Each Use

Before each use, perform the following:

- Perform the “3.1 Pre–Operation Inspection” on page 10 by walking around the equipment.
- Perform a daily inspection as indicated in “4.1 Service Schedule” on page 16.
- Verify that the proper attachment is being used for the task at hand. Use the Rock Bucket Grapple for material handling only.
- Verify that the attachment is being used on an appropriate host machine.



Use on an incompatible host machine could result in damage to the attachment or host machine.

NOTE: If the attachment has been in storage or has not been used for an extended period of time, wipe down the chrome portion of the cylinder with hydraulic fluid so to not snag the seals.



DANGER



AVOID SERIOUS INJURY OR DEATH

Keep all body parts from the grapple tines when in use. The upper clamp(s) may open or close unexpectedly, causing serious injury or death.

Inspect the attachment daily before each use. It is also recommended to inspect the Rock Bucket Grapple after extreme use or damage. Use the service schedule on page 16 as a guideline.

4.3 After Every Season

Inspect the attachment for any loose or worn parts that may need replaced prior to the next season.

Clean and repaint any area that looks worn or scratched to prevent further rusting. Use an equipment paint found at your local hardware store or building center.

Replace any safety decals that have been lost or damaged.

Store the attachment in a shed or cover with a waterproof tarp to protect it from the weather. Store in an area not frequented by children.

4.4 Lubrication Points

Grease all pivot points every eight (8) hours of use to prevent excess wear on the clamp pins.

The Heavy Duty Rock Bucket Grapples have four (4) grease points. These points are circled in Figure 1.

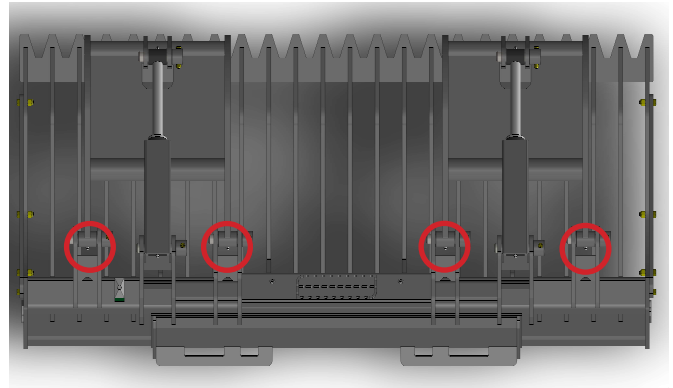


Figure 1

4. Maintenance

4.5 Storage

Storage

Sometimes it may be necessary to store your Heavy Duty Rock Bucket Grapple for an extended period of time. Below is a list of items to perform before storage.

- Make sure the hydraulic hose couplers are capped, plugged, or connected to each other.
- Thoroughly wash the attachment before storing it for long periods.
- Lubricate the attachment.
- Coat the exposed portion of the cylinder with oil.
- Check for loose hardware, missing guards, or damaged parts.
- Check for damaged or missing decals. Replace if necessary.
- Replace worn or damaged parts.
- Place the attachment flat on the ground in a dry, protected shelter.

NOTE: In muddy conditions or to prevent the attachment from freezing to the ground, put the attachment on planks or blocks before removing the attachment from the machine.

Return to Service

After the Heavy Duty Rock Bucket Grapple has been in storage, it is necessary to follow a list of items to return the attachment to service.

- Lubricate the attachment.
- Clean the exposed portion of the cylinder rod and apply a light coating of oil.
- Connect and operate the attachment and check for correct function.
- Check for leaks. Repair as needed.

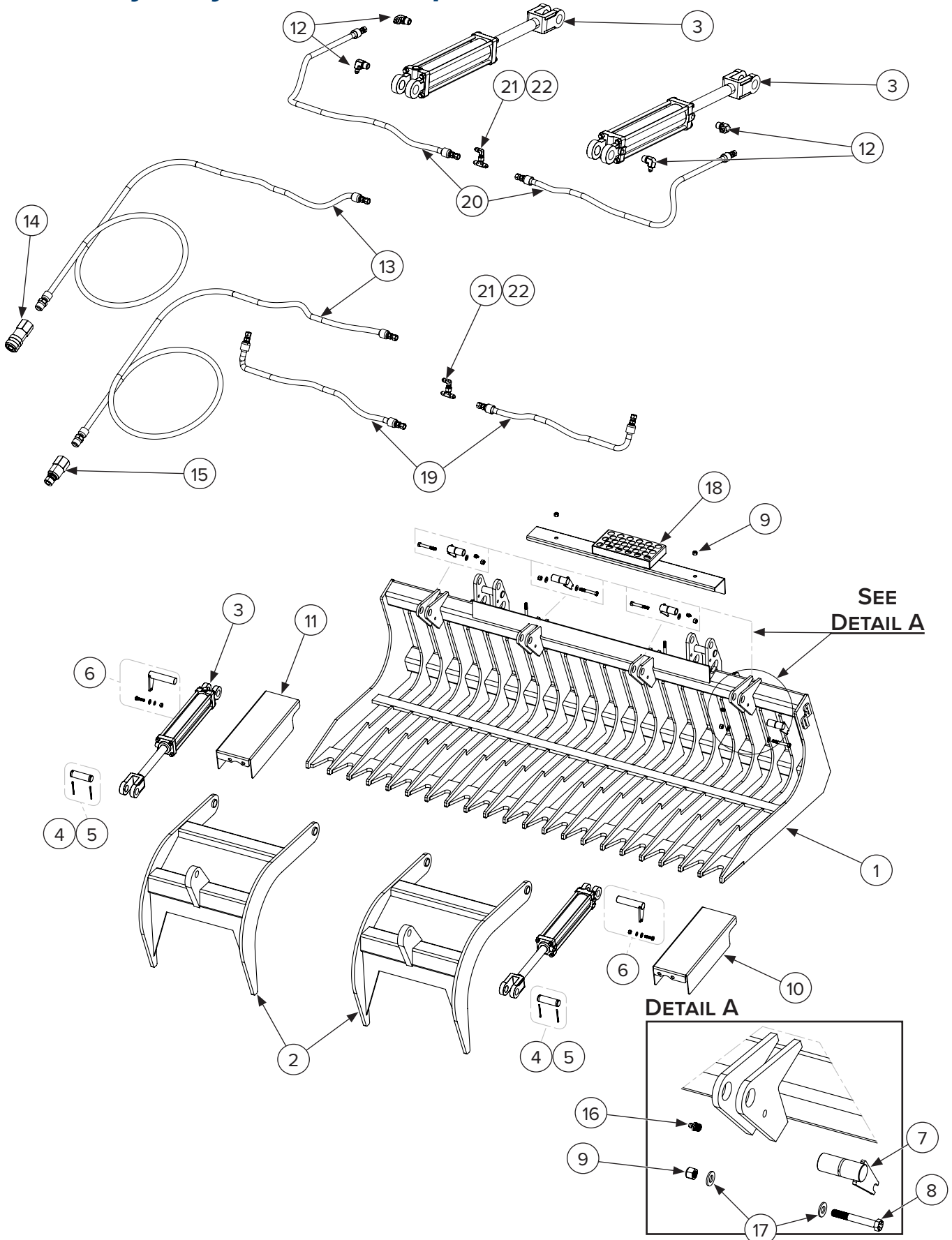
4. Maintenance

4.6 Troubleshooting

PROBLEM	CAUSE	SOLUTION
Hydraulic oil level goes down during operation.	Leak at hoses on the attachment	Investigate and repair.
	Leak in the host machine's hydraulic system	Investigate and repair.
Clamps do not open or close.	Quick disconnects not connected	Check and recouple quick disconnects.
	Hoses damaged	Check for a smashed or kinked hose. Replace if found.
	Auxiliary hydraulics not engaged	Engage hydraulics.
	Skid steer auxiliary circuit inoperative	Investigate and repair.
Clamps move abnormally slow.	Restricted hose	Check for damaged hose between skid steer and cylinder. If damaged, replace the hose.
	Bad circuit relief on skid steer	Investigate and repair.
	Auxiliary valve spool on skid steer not shifting properly	Investigate and repair.
	Cylinder seals bypassing	Have cylinder repacked or replaced.

5. Parts

5.1 Heavy Duty Series 1 Components



5. Parts

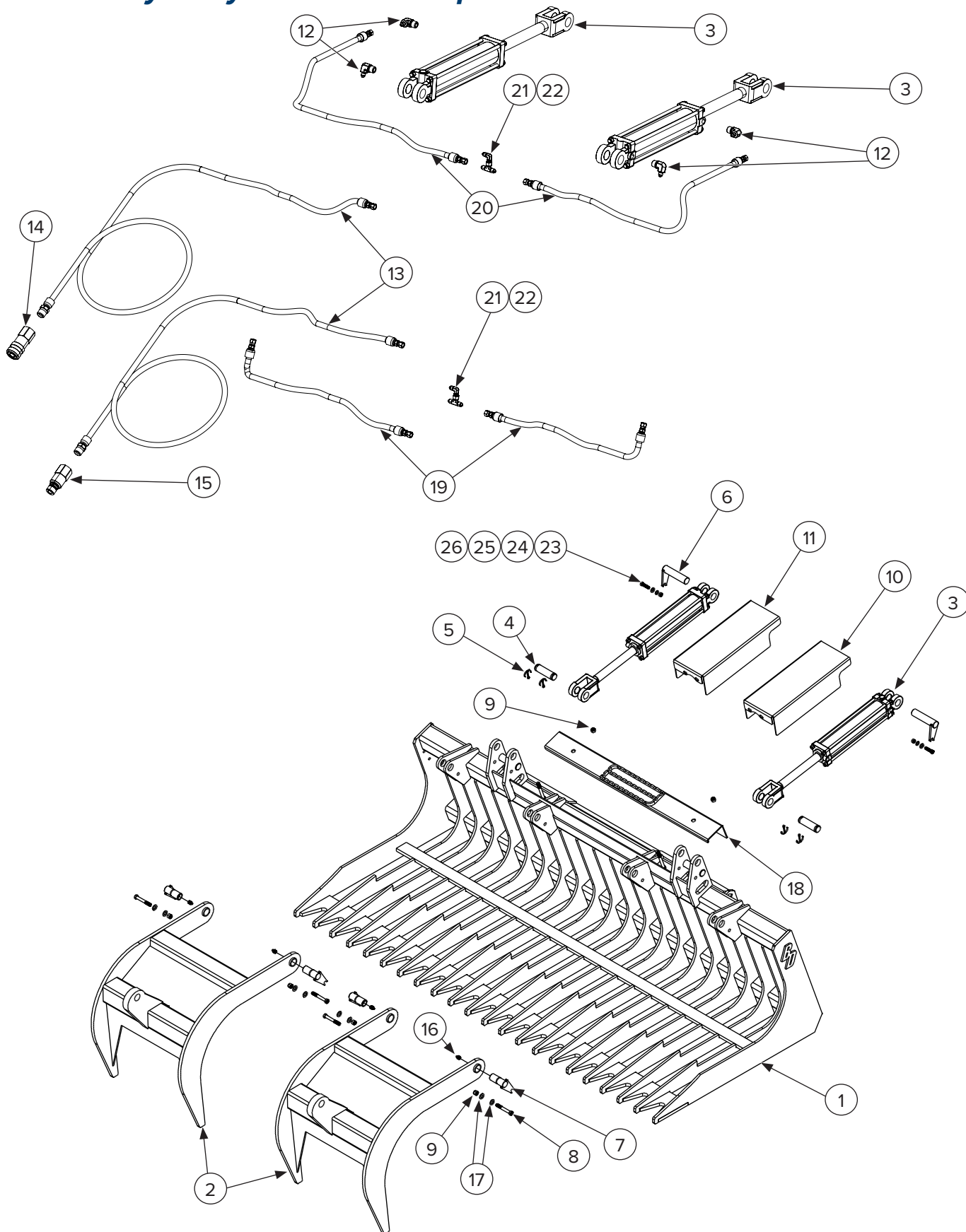
5.1 Heavy Duty Series 1 Components Cont'd

ITEM	PART NUMBER	DESCRIPTION	QTY
1*	208330	66" Main Frame	1
	208345	72" Main Frame	
	208360	78" Main Frame	
	208380	84" Main Frame	
2	208500	Top Clamp Weldment	2
3	206110	Cylinder Ag Style 2" Bore x 8" Stroke Maxim Cylinder	2
4	206115	Front Cylinder Pin	2
5	Included in Item 4 — 299517	Ø5/32" x 2" Cotter Pin	4
6	208525	1" x 4 1/4" Rear Cylinder Pivot Pin with Hardware	2
7	206105	Clamp Pivot Pin, Greaseable	4
8	299446	3/8"—16 x 3 1/4" Bolt Hex Head Grade 8	4
9	299625	3/8"—16 Nylock Nut Hex Grade 8	6
10	208535	Left Cylinder Cover	1
11	208536	Right Cylinder Cover	1
12	295030-M04JIC-M06NPT	Hydraulic 90 Degree Fitting Male #4 JIC to Male #6 Pipe Thread	4
13	224315	Machine Side Hose Set with Sleeve, No Couplers	1
14	224005	Coupler, Female Flat Face Straight 1/2" Body Female #8 NPT	1
15	224006	Coupler, Male Flat Face Straight 1/2" Body Female #8 NPT	1
16	299016	1/8" NPT Steel Grease Zerk Fitting (Included with Item #7 206105)	4
17	299725	3/8" Flat Washer Grade 8	8
18	208540	Hose Cover with Step for 66" & 72" Models	1
	208545	Hose Cover with Step for 78" Models	
	208546	Hose Cover with Step for for 84" Models	
19	224300	Short Cylinder Hose for 66" & 72" Models	2
	224310	Short Cylinder Hose for 78" & 84" Models	
20	224301	Long Cylinder Hose for 66" & 72" Models	2
	224311	Long Cylinder Hose for 78" & 84" Models	
21	295051	Hydraulic Bulkhead Run Tee Fitting with Nut Male #4 JIC Bulkhead to Male #4 JIC to Male #4 JIC	2
22	295030-M04JIC-F04JIC	Hydraulic 90 Degree Fitting Male #4 JIC to Female #4 JIC Swivel	2

*Specify mount type.

5. Parts

5.2 Heavy Duty Series 2 Components



5. Parts

5.2 Heavy Duty Series 2 Components Cont'd

ITEM	PART NUMBER	DESCRIPTION	QTY
1*	208332	66" Main Frame	1
	208347	72" Main Frame	
	208362	78" Main Frame	
	208382	84" Main Frame	
2	206210	Top Clamp Weldment	2
3	206110	Cylinder Ag Style 2" Bore x 8" Stroke Maxim Cylinder	2
4	206115	Front Cylinder Pin	2
5	Included in Item 4 — 299517	Ø5/32" x 2" Cotter Pin	4
6	208525	1" x 4 1/4" Rear Cylinder Pivot Pin with Hardware	2
7	206105	Clamp Pivot Pin, Greaseable	4
8	299446	3/8"—16 x 3 1/4" Bolt Hex Head Grade 8	4
9	299625	3/8"—16 Nylock Nut Hex Grade 8	6
10	208535	Left Cylinder Cover	1
11	208536	Right Cylinder Cover	1
12	295030-M04JIC-M06NPT	Hydraulic 90 Degree Fitting Male #4 JIC to Male #6 Pipe Thread	4
13	224315	Machine Side Hose Set with Sleeve, No Couplers	1
14	224005	Coupler, Female Flat Face Straight 1/2" Body Female #8 NPT	1
15	224006	Coupler, Male Flat Face Straight 1/2" Body Female #8 NPT	1
16	299016	1/8" NPT Steel Grease Zerk Fitting (Included with Item #7 206105)	4
17	299725	3/8" Flat Washer Grade 8	8
18	208540	Hose Cover with Step for 66" & 72" Models	1
	208547	Hose Cover with Step for 72" & 84" Models	
19	224300	Short Cylinder Hose	2
20	224301	Long Cylinder Hose	2
21	295051	Hydraulic Bulkhead Run Tee Fitting with Nut Male #4 JIC Bulkhead to Male #4 JIC to Male #4 JIC	2
22	295030-M04JIC-F04JIC	Hydraulic 90 Degree Fitting Male #4 JIC to Female #4 JIC Swivel	2
23	299420	5/16"—18 x 1 1/4" Grade 8 Zinc Plated (Included in Item #6 208525)	2
24	299815	5/16" Lock Washer Grade 8 (Included in Item #6 208525)	2
25	299571	5/16"—18 Nut Hex Grade 8 Zinc Yellow Chromate Plated (Included in Item #6 208525)	2
26	299721	0.065" x 0.688" Washer SAE Grade 8 Zinc Yellow Chromate Plated (Included in Item #6 208525)	2

*Specify mount type.

5. Parts

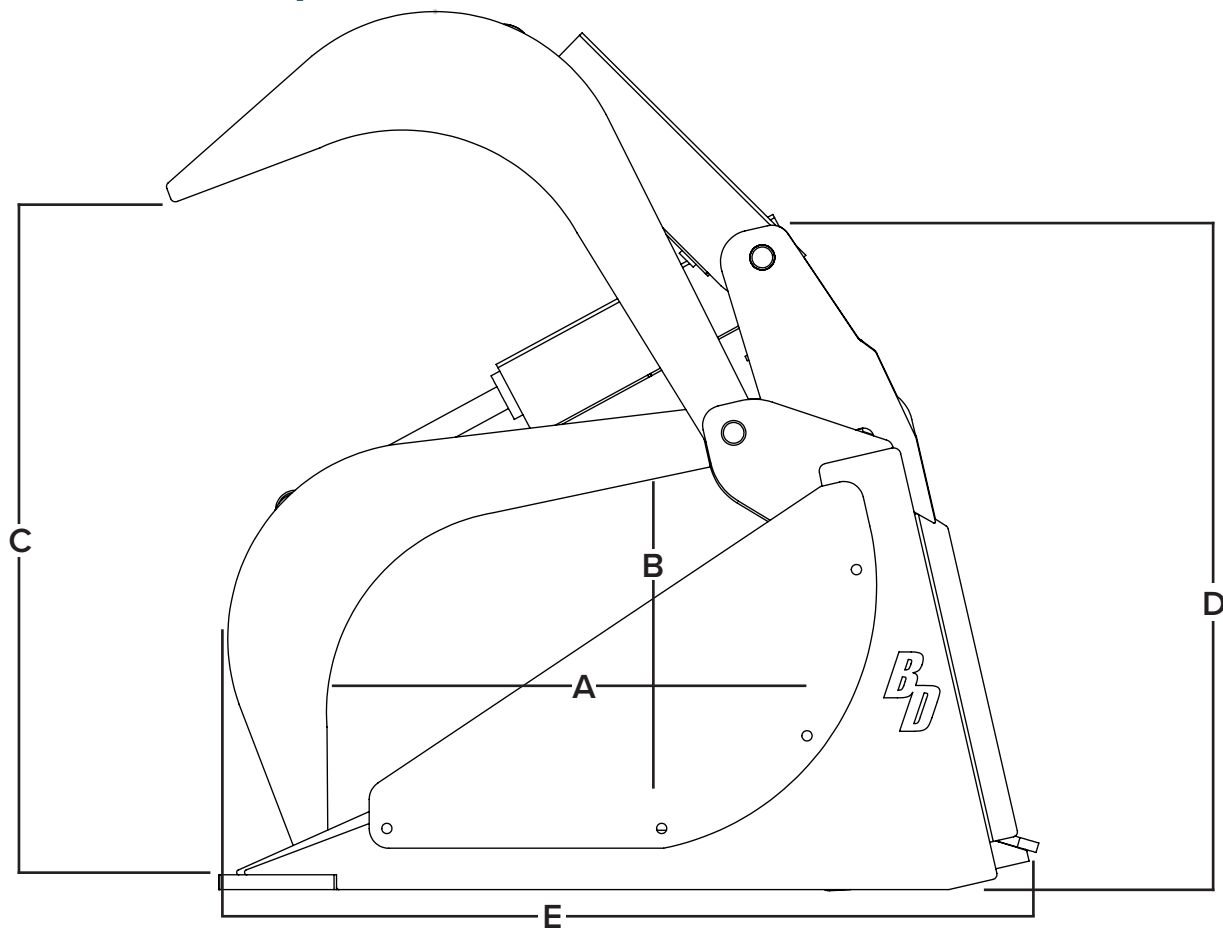
5.3 Safety Decals



ITEM	PART NUMBER	DESCRIPTION	QTY
1	BD-060	2.5" x 3.5" Decal, Blue Diamond, Diamond Shape	4
2	BD-003	2.5" x 2.5" Decal, Crush Hazard Stay Clear	2
3	BD-092	1.5" x 2.0" Decal, Warranty Registration QR Code	1
4	BD-001	3.0" x 3.0" Decal, Read Owner's Manual	1
5	BD-004	2.0" x 4.0" Decal, Grease All Fittings Every 8 Hours	1
6	BD-123	3.0" x 3.0" Decal, High Pressure Fluid Hazard	1
7	BD-056	2.0" x 12.0" Decal, Blue Diamond	2
8	BD-117	1.5" x 7.74" Decal, Heavy Duty	2

6. Specifications

6.1 Attachment Specifications



Heavy Duty & Heavy Duty Series 2

DESCRIPTION	108330 108332	108345 108347	108360 108362	108380 108382
Width	66"	72"	78"	84"
Inside Depth with Closed Clamp (A)	23 1/8"			
Inside Height with Closed Clamp (B)	13 4/5"			
Opening Height (C)	33"			
Overall Height with Closed Clamp (D)	27 1/2"			
Overall Depth (E)	38 5/8"			
Top Clamp Thickness	1/2"			
Number of Clamps	2			
Maximum Pressure	2500 PSI			
Rated Horsepower	65 HP			
Weight	700 lbs	750 lbs	775 lbs	800 lbs

6. Specifications

6.2 Torque Specifications – Imperial

Standard Hardware and Lock Nuts

BOLT TYPE	SAE GRADE 5		SAE GRADE 8		LOCK NUTS			
Nominal Size	Plated or Unplated Silver	Plated W/ ZnCr Gold	Plated or Unplated Silver	Plated W/ ZnCr Gold	Plated or Unplated Silver	Plated W/ ZnCr Gold	W/ Grade 5 Bolt	W/ Grade 8 Bolt
1/4	4.6 lbf•ft	6.0 lbf•ft	7.2 lbf•ft	9.3 lbf•ft	10.0 lbf•ft	13.1 lbf•ft	5.1 lbf•ft	7.2 lbf•ft
	6.2 N•m	8.1 N•m	9.7 N•m	12.6 N•m	13.6 N•m	17.7 N•m	6.9 N•m	9.8 N•m
5/16	9.6 lbf•ft	12.5 lbf•ft	14.8 lbf•ft	19.2 lbf•ft	20.7 lbf•ft	27.3 lbf•ft	10.3 lbf•ft	14.8 lbf•ft
	13 N•m	17 N•m	20 N•m	26 N•m	28 N•m	37 N•m	14 N•m	20 N•m
3/8	17 lbf•ft	22 lbf•ft	26 lbf•ft	34 lbf•ft	37 lbf•ft	48 lbf•ft	19 lbf•ft	26 lbf•ft
	23 N•m	30 N•m	35 N•m	46 N•m	50 N•m	65 N•m	26 N•m	35 N•m
7/16	27 lbf•ft	35 lbf•ft	42 lbf•ft	54 lbf•ft	59 lbf•ft	77 lbf•ft	30 lbf•ft	42 lbf•ft
	37 N•m	47 N•m	57 N•m	73 N•m	80 N•m	104 N•m	41 N•m	57 N•m
1/2	42 lbf•ft	54 lbf•ft	64 lbf•ft	83 lbf•ft	91 lbf•ft	117 lbf•ft	45 lbf•ft	65 lbf•ft
	57 N•m	73 N•m	87 N•m	113 N•m	123 N•m	159 N•m	61 N•m	88 N•m
9/16	60 lbf•ft	77 lbf•ft	92 lbf•ft	120 lbf•ft	130 lbf•ft	169 lbf•ft	65 lbf•ft	92 lbf•ft
	81 N•m	104 N•m	125 N•m	163 N•m	176 N•m	229 N•m	88 N•m	125 N•m
5/8	83 lbf•ft	107 lbf•ft	128 lbf•ft	165 lbf•ft	180 lbf•ft	233 lbf•ft	90 lbf•ft	127 lbf•ft
	112 N•m	145 N•m	174 N•m	224 N•m	244 N•m	316 N•m	122 N•m	172 N•m
3/4	146 lbf•ft	189 lbf•ft	226 lbf•ft	293 lbf•ft	319 lbf•ft	413 lbf•ft	160 lbf•ft	226 lbf•ft
	198 N•m	256 N•m	306 N•m	397 N•m	432 N•m	560 N•m	217 N•m	306 N•m
7/8	142 lbf•ft	183 lbf•ft	365 lbf•ft	473 lbf•ft	515 lbf•ft	667 lbf•ft	258 lbf•ft	364 lbf•ft
	193 N•m	248 N•m	495 N•m	641 N•m	698 N•m	904 N•m	350 N•m	494 N•m
1	213 lbf•ft	275 lbf•ft	547 lbf•ft	708 lbf•ft	773 lbf•ft	1000 lbf•ft	386 lbf•ft	545 lbf•ft
	289 N•m	373 N•m	742 N•m	960 N•m	1048 N•m	1356 N•m	523 N•m	739 N•m



Warranty

MANUFACTURER'S LIMITED WARRANTY

BLUE DIAMOND® ATTACHMENTS, a manufacturer of quality attachments, warrants new BLUE DIAMOND® ATTACHMENTS products and/or attachments at the time of delivery to the original purchaser, to be free from defects in material and workmanship when properly set up and operated in accordance with the recommendations set forth by BLUE DIAMOND® ATTACHMENTS, LLC.

BLUE DIAMOND® ATTACHMENTS liability for any defect with respect to accepted goods shall be limited to repairing the goods at a BLUE DIAMOND® ATTACHMENTS designated location or at an authorized dealer location, or replacing them, as BLUE DIAMOND® ATTACHMENTS shall elect. The above shall be in accordance with BLUE DIAMOND® ATTACHMENTS warranty adjustment policies. BLUE DIAMOND® ATTACHMENTS obligation shall terminate twelve (12) months for the Heavy Duty Rock Bucket Grapple after the delivery of the goods to original purchaser.

This warranty shall not apply to any machine or attachment which shall have been repaired or altered outside the BLUE DIAMOND® ATTACHMENTS factory or authorized BLUE DIAMOND® ATTACHMENTS dealership or in any way so as in BLUE DIAMOND® ATTACHMENTS judgment, to affect its stability or reliability, nor which has been subject to misuse, negligence or accident beyond the company recommended machine rated capacity.

WARRANTY CLAIM

To submit a warranty claim, a claim must be filed with BLUE DIAMOND® ATTACHMENTS before work is performed. The BLUE DIAMOND® PRODUCT SUPPORT TEAM will advise repairs and applicable parts exchanges. Tampering with the failed part may void the warranty. This warranty does not include freight or delivery charges incurred when returning machinery for servicing. Dealer mileage, service calls, and pickup/delivery charges are the customers' responsibility.

EXCLUSIONS OF WARRANTY

Except as otherwise expressly stated herein, BLUE DIAMOND® ATTACHMENTS makes no representation or warranty of any kind, expressed or implied, AND MAKES NO WARRANTY OF MERCHANTABILITY IN RESPECT TO ITS MACHINERY AND/OR ATTACHMENTS ARE FIT FOR ANY PARTICULAR PURPOSE. BLUE DIAMOND® ATTACHMENTS shall not be liable for incidental or consequential damages for any breach or warranty, including but not limited to inconvenience, rental of replacement equipment, loss of profits or other commercial loss. Upon purchase, the buyer assumes all liability for all personal injury and property resulting from the handling, possession, or use of the goods by the buyer.

No agent, employee, or representative of BLUE DIAMOND® ATTACHMENTS has any authority to bind BLUE DIAMOND® ATTACHMENTS to any affirmation, representation, or warranty concerning its machinery and/or attachments except as specifically set forth herein.

This warranty policy supersedes any previous documents. Please see bluediamondattachments.com/warranty-policies for the most up to date warranty information.

NOTE: Blue Diamond® Attachments is a trademark of BLUE DIAMOND® ATTACHMENTS



QUALITY | DEPENDABILITY | INTEGRITY

Blue Diamond® Attachments
4512 Anderson Road, Knoxville, TN 37918
888-376-7027