



3 POINT HITCH

SILT FENCE INSTALLER
OPERATOR & PARTS MANUAL

SAFETY

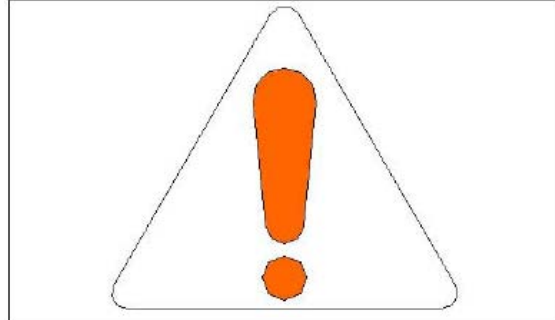
RECOGNIZE SAFETY INFORMATION

This is the safety alert symbol. When you see this symbol on your machine or in this manual, be alert for the potential of personal injury.

Follow the precautions and safe operating practices highlighted by this symbol.

A signal word - DANGER, WARNING, or CAUTION - is used with the safety alert symbol. DANGER identifies the most serious hazards.

On your machine, DANGER signs are red in color, WARNING signs are orange, and CAUTION signs are yellow. DANGER and WARNING signs are located near specific hazards. General precautions are on CAUTION labels.



Follow Safety Instructions

Read the safety messages in this manual and on the machine. Follow these warnings and instructions carefully. Review them frequently.

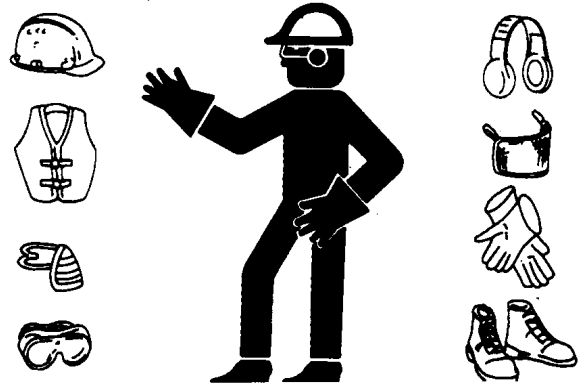
Be sure all operators of this machine understand every safety message. Replace operator's manual and safety labels immediately if missing or damaged.

Wear Protective Equipment

Guard against injury from flying pieces of debris; wear goggles or safety glasses.

Wear close fitting clothing and safety equipment appropriate to the job.

Prolonged exposure to loud noise can cause impairment or loss of hearing. Wear suitable hearing protection such as earmuffs or earplugs to protect against objectionable or uncomfortable loud noises.



Inspect Machine

Inspect machine carefully each day by walking around it before starting.

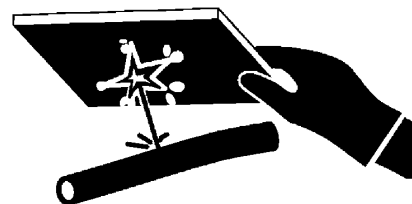
Keep all guards and shields in good condition and properly installed. Fix damage and replace worn or broken parts immediately. Pay special attention to hydraulic hoses and electrical wiring.



Avoid High-Pressure Fluids

This machine uses a high-pressure hydraulic system. Escaping fluid under pressure can penetrate the skin causing serious injury.

Never search for leaks with your hands. Protect hands. Use a piece of cardboard to find location of escaping fluid. Stop engine and relieve pressure before disconnecting lines or working on hydraulic system.



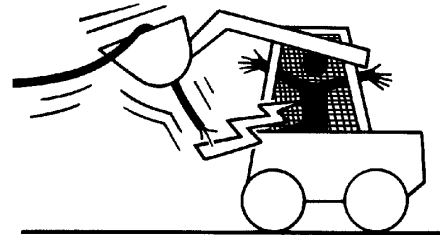
Avoid Work Site Hazards

Avoid contact with gas lines, buried cables and water lines. Call utility line location services to identify all underground utilities before starting work.

Prepare work site properly. Avoid operating near structures or objects that could fall onto the machine. Clear away debris that could move unexpectedly if run over.

Avoid boom or attachment contact with overhead obstacles or overhead electrical lines. Never move machine closer than 3 m (10 ft) plus twice the line insulator length to overhead wires.

Keep bystanders clear at all times. Use barricades or a signal person to keep vehicles and pedestrians away. Use a signal person if moving machine in congested areas or where visibility is restricted. Always keep signal person in view. Coordinate hand signals before starting machine.



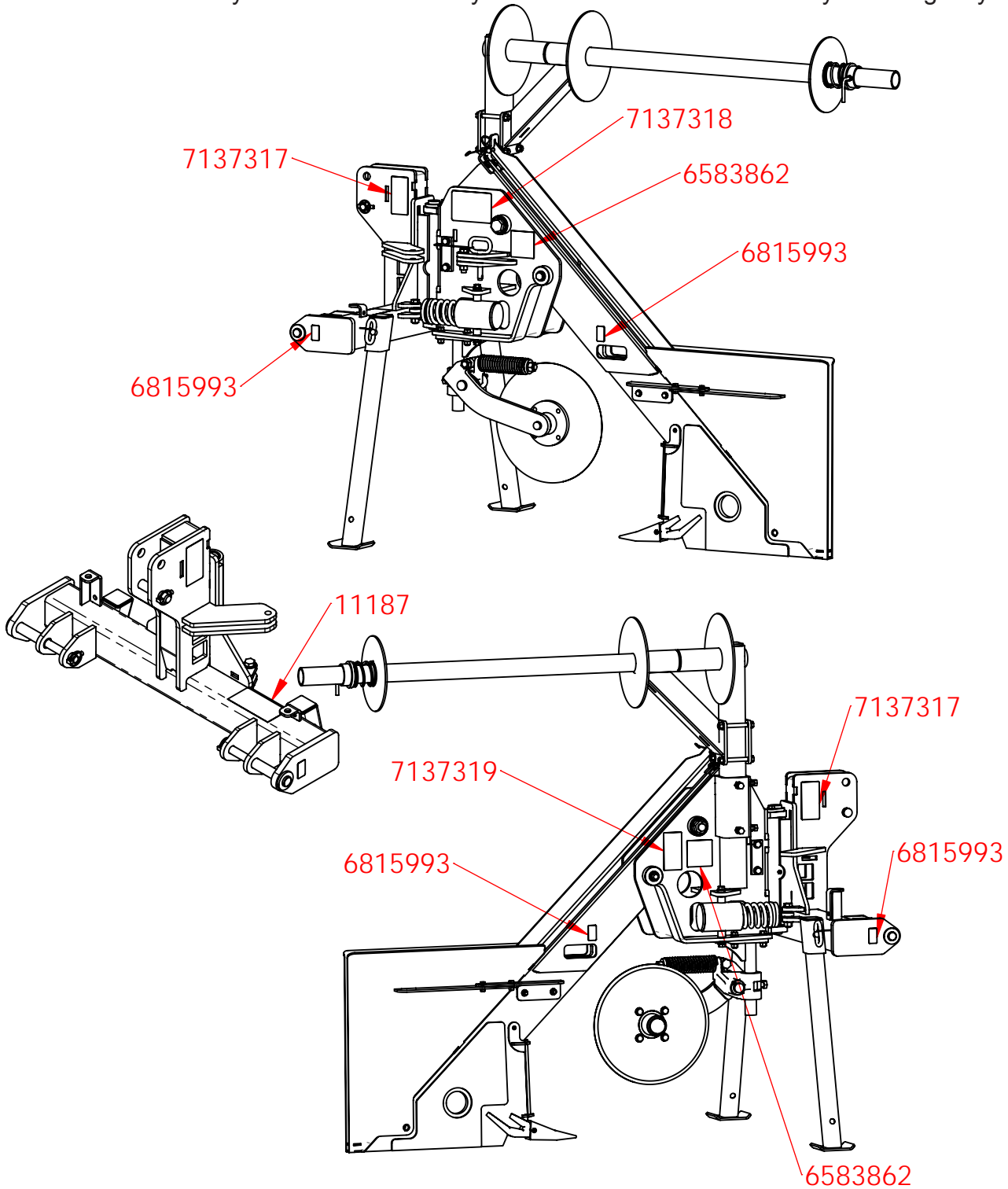
Operate only on solid footing with strength sufficient to support machine. Be especially alert working near embankments or excavations.

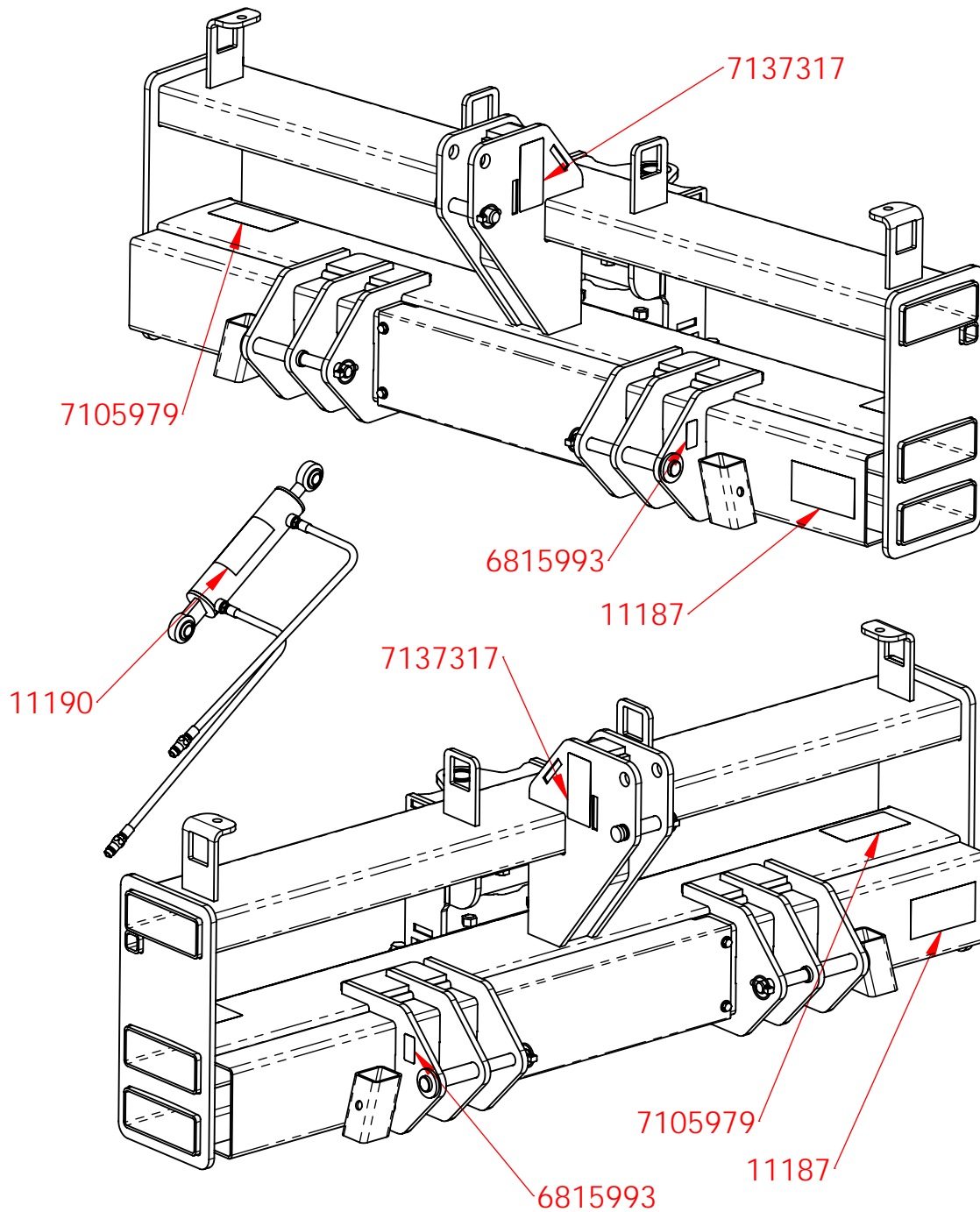
Avoid working under over-hanging embankments or stockpiles that could collapse under or on machine.

SAFETY DECAL PLACEMENT

GENERAL INFORMATION

The diagrams on this page show the locations of the safety decals used on the Silt Fence Installer. The decals are identified by their part numbers, with images of the decals shown on the following pages. Use this information to order replacements for lost or damaged decals. Be sure to read all decals before operating the Silt Fence Installer. They contain information you need to know for both safety and longevity.



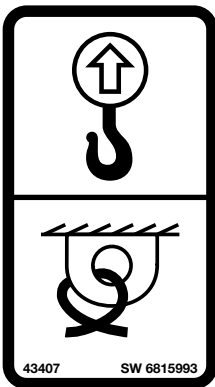


IMPORTANT: Keep all safety signs clean and legible. Replace all missing, illegible, or damaged safety signs. When replacing parts with safety signs attached, the safety signs must also be replaced.

REPLACING SAFETY SIGNS: Clean the area of application with nonflammable solvent, then wash the same area with soap and water. Allow the surface to fully dry. Remove the backing from the safety sign, exposing the adhesive surface. Apply safety sign to the position shown in the diagram above and smooth out any bubbles.



DECAL - WARNING, STAY CLEAR
PART # 6583862



Use these areas on the machine to tie-down or lift the machine.

DECAL - TIE-DOWN / LIFT POINT
PART # 6815993



DECAL - WARNING, PINCH
POINT

PART #7105979



WARNING: Silt fence installers equipped with a sliding offset hitch can create a pinch point. Keep hands off of the sliding offset hitch while moving the installer from side to side.

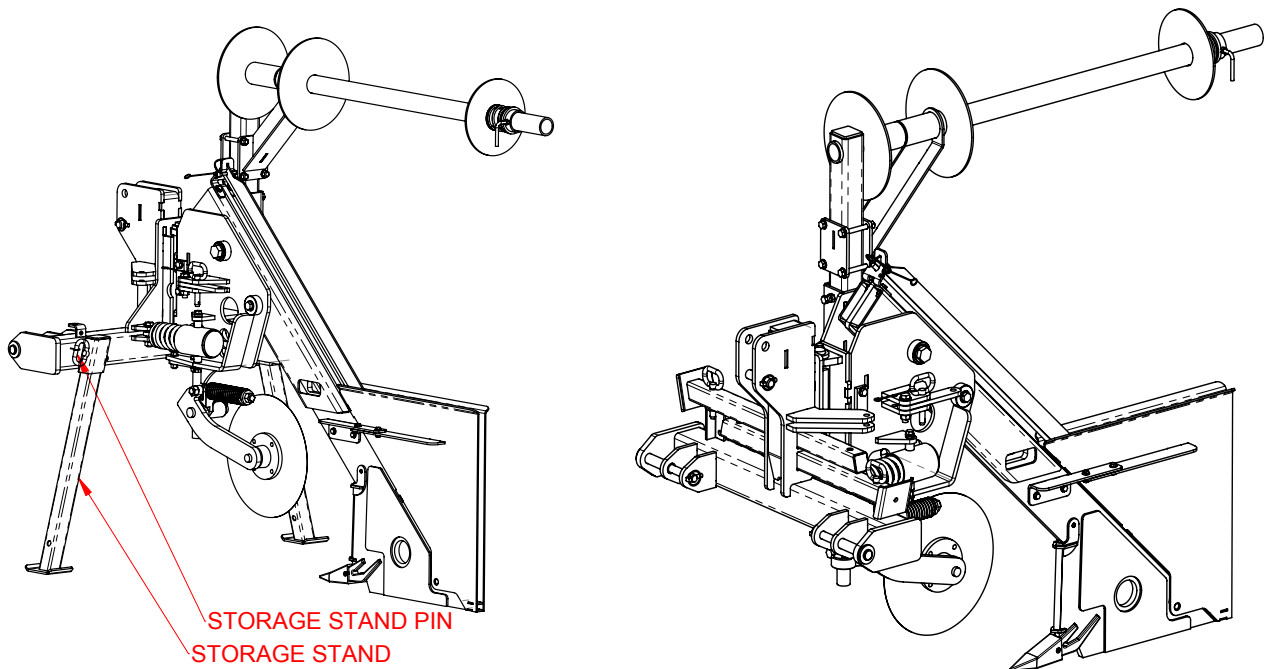
OPERATION

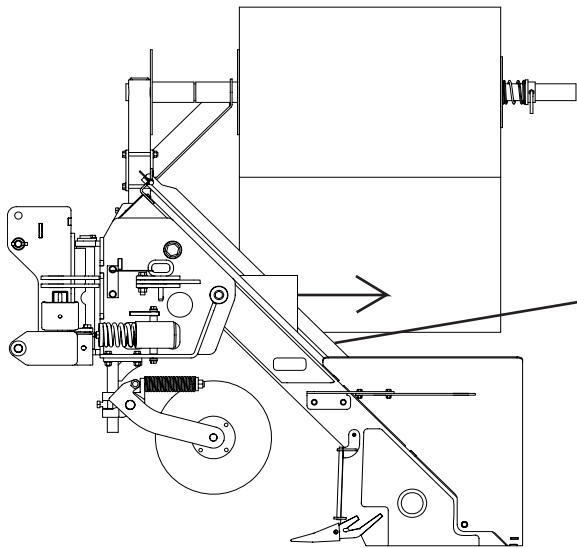
HOOKING UP TO THE SILT FENCE INSTALLER

Always read your loader or tractor operator manual before attaching the silt fence installer.

Tractor 3-point and sliding offset units are equipped with storage stands. The storage legs are lowered when the installer is not hooked to a tractor.

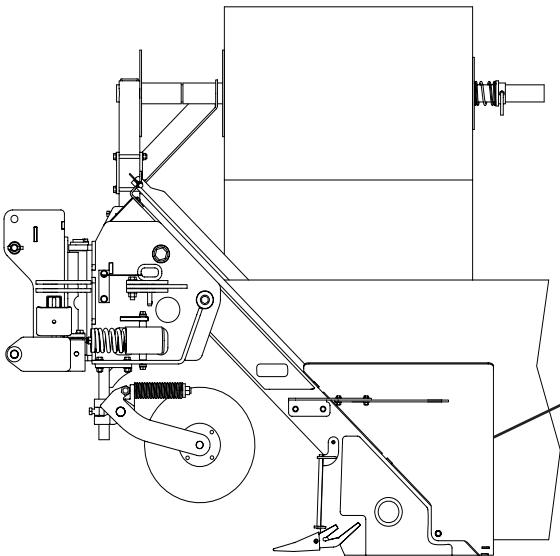
Store the stands in the 3-point hitch when the installer is hooked to the tractor. Use the storage stand pin to lock the stands in place.





Pull one corner of the fabric under the fabric transition rod and fold it toward the back of the installer.

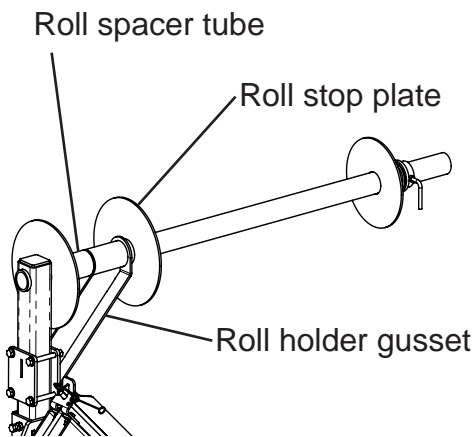
Fabric transition rod.



Continue to pull the fabric toward the rear of the machine until approximately 12" of fabric is exposed behind the rear of the chute.

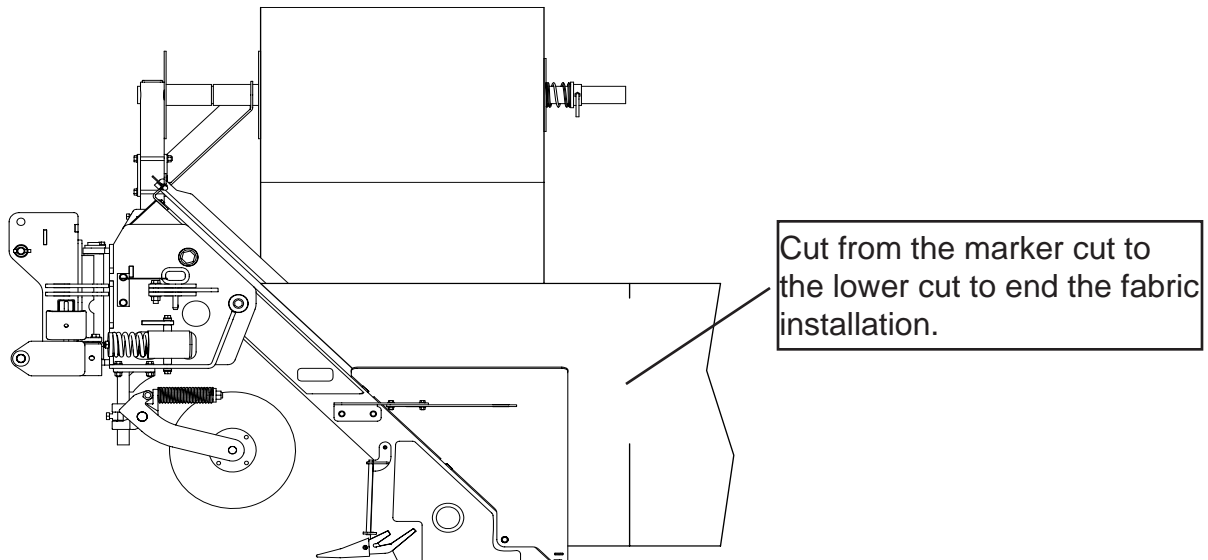
Rear of chute.

The silt fence is now ready to be installed.



The silt fence installer can install 36 in., 42 in., and 48 in. wide fabric. The machine is configured to install 36 in. fabric as shown. To install 42" fabric, remove the roll holder gusset and replace the roll stop plate. To install 48" fabric, remove the roll stop plate, roll holder gusset and roll spacer tube. See the parts section for a detailed breakdown of the roll holder assembly.

After the cuts have been made, pull the installer forward until the cuts are behind the fabric chute.



The fabric can also be cut completely above the chute. The method shown above does not require the fabric to be re-threaded after the cut.

Make sure the fabric has been pulled completely through the chute before raising the installer out of the ground. If fabric is still in the chute as it is being raised, the fabric can be pulled to the bottom of the chute. This may cause the fabric to catch or tear.

FINISHING THE FENCE INSTALLATION

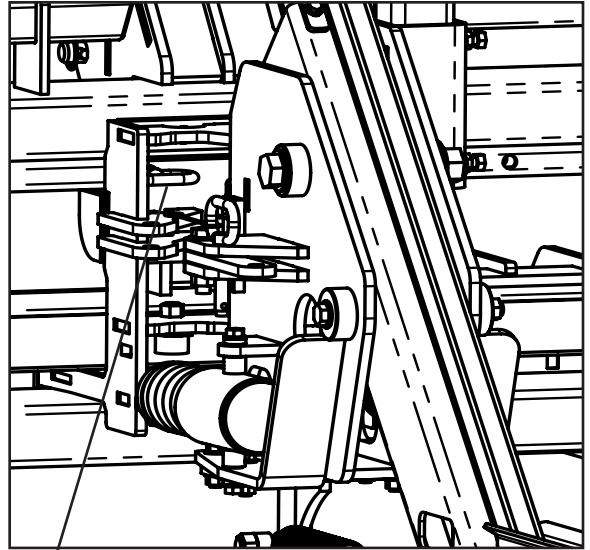
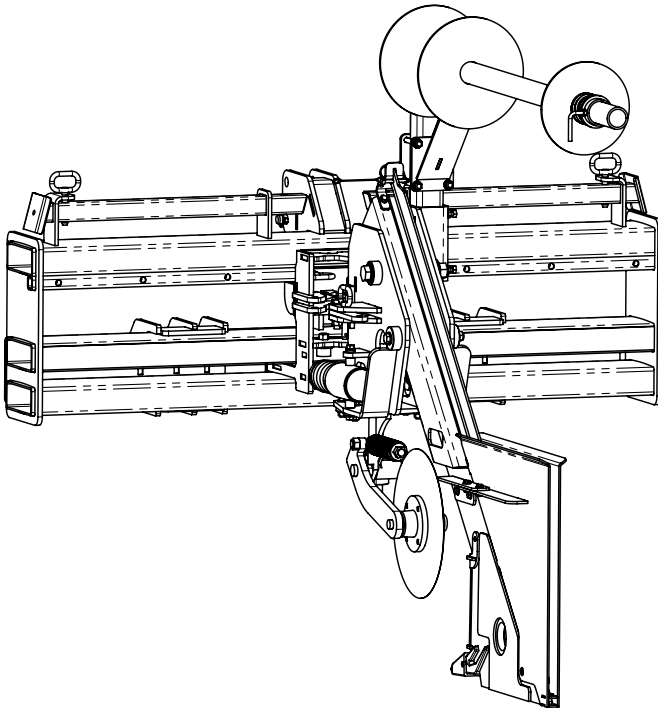


After the fence has been sliced in, use the tractor or loader to drive over the sliced trench and compact the soil. This will lock the fabric in place. For a proper installation, the soil should be compacted before the posts are installed.

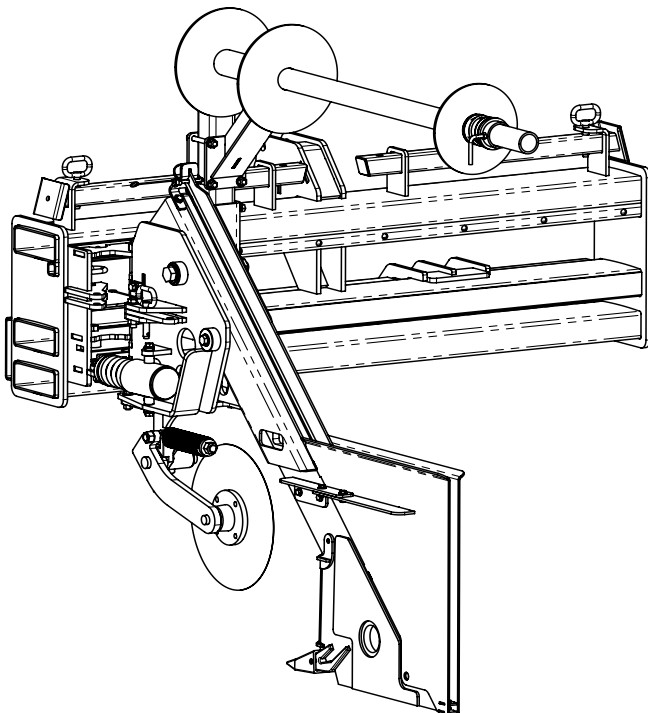
After the fabric has been compacted, install posts and attach the fabric to the posts according to the job specifications.

SLIDING OFFSET HITCH

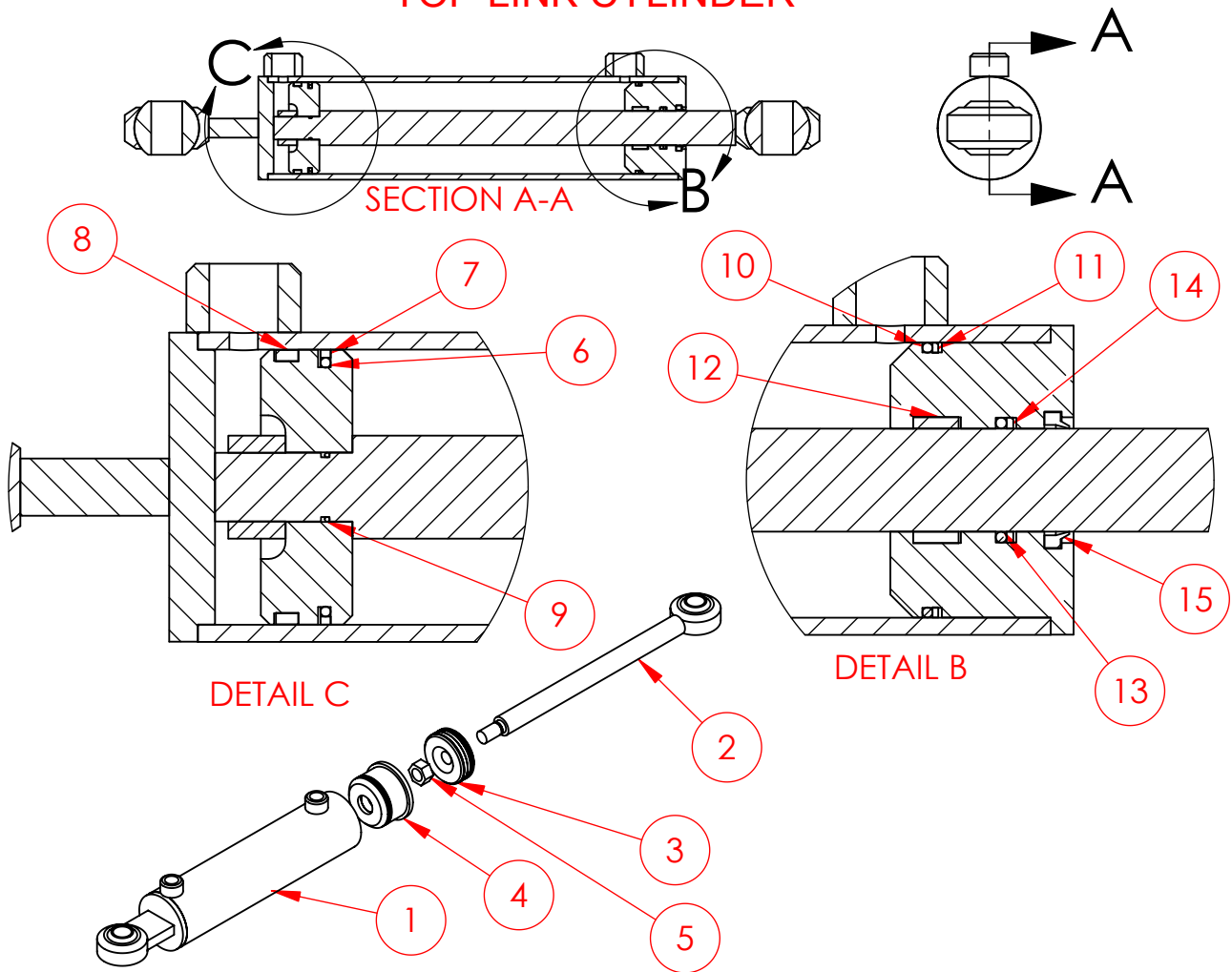
Optional sliding offset hitches are available. A sliding offset hitch allows the silt fence installer to be offset to the left or right of center.



Pull the slider lock pin to unlock the hitch. Slide the installer to the desired position and replace the pin.

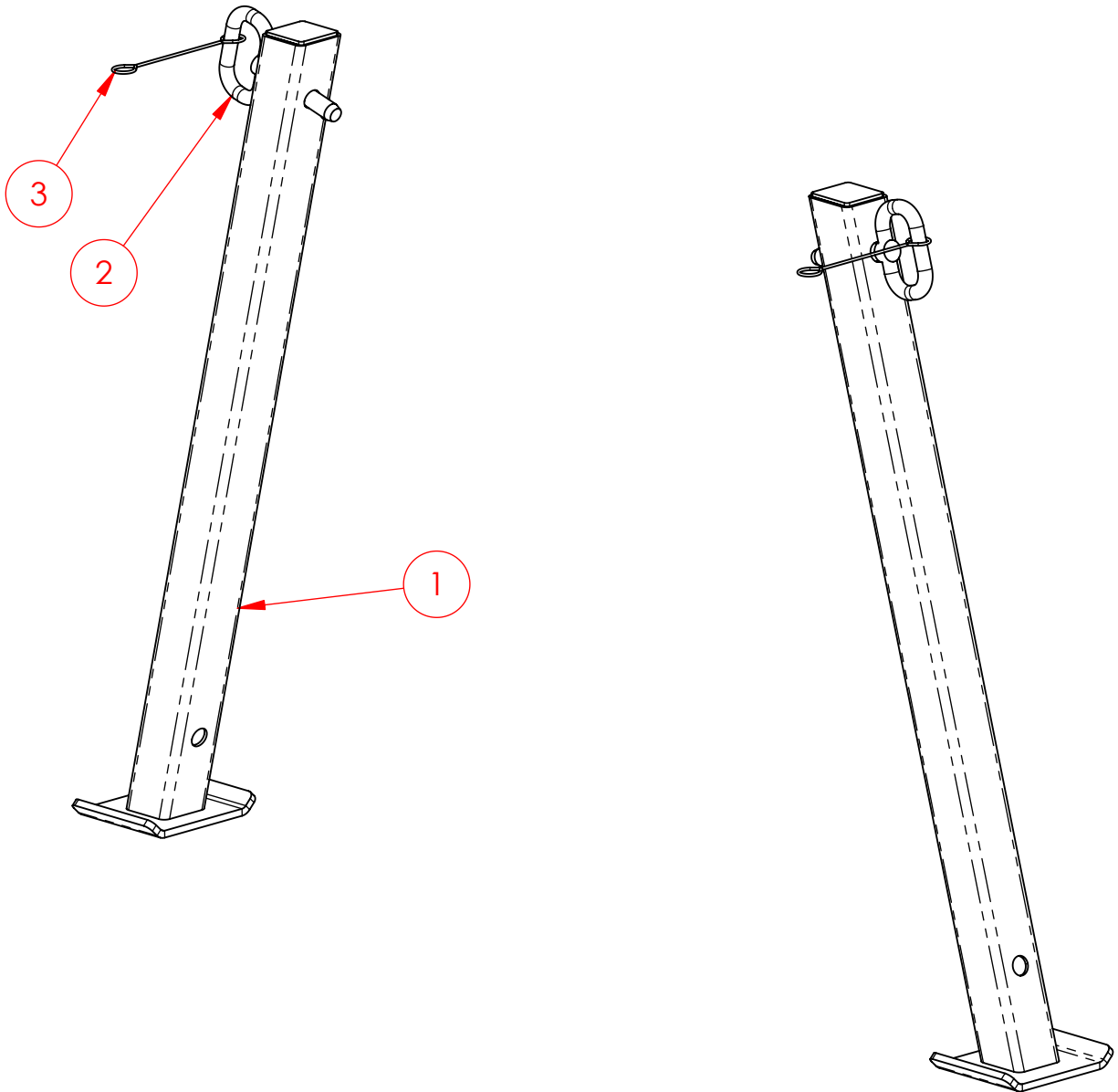


TOP LINK CYLINDER



ITEM NO.	PART NUMBER	DESCRIPTION	QTY
1	11172	CASE WELDMENT, 3X10	1
2	11173	CYL ROD WELDMENT, 3X10	1
3	11174	CYL PISTON, 3"	1
4	11175	CYL HEAD, 3"	1
5	10467	NUT - 3/4-16 HEX LOCK GR5 ZY	1
6	11176	O-RING	1
7	11177	PISTON SEAL, 3"	1
8	11178	BORE WEAR RING	1
9	11179	SHAFT O-RING	1
10	11180	O-RING	1
11	11181	BACK-UP RING	1
12	11182	SHAFT WEAR RING	1
13	11183	O-RING	1
14	11184	BACK-UP RING	1
15	11185	CYL ROD WIPER	1
16	11186	SEAL KIT, INCLUDES ITEMS 6-15	1

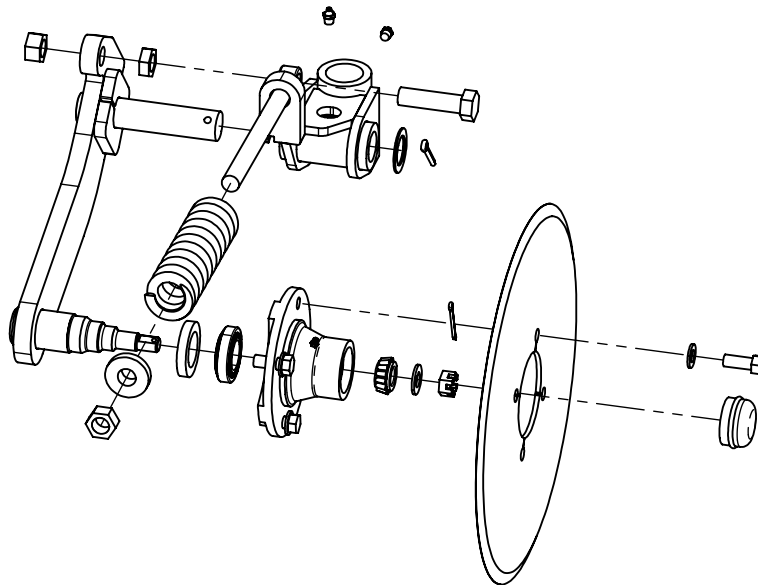
SILT FENCE INSTALLER LEG ASSEMBLY



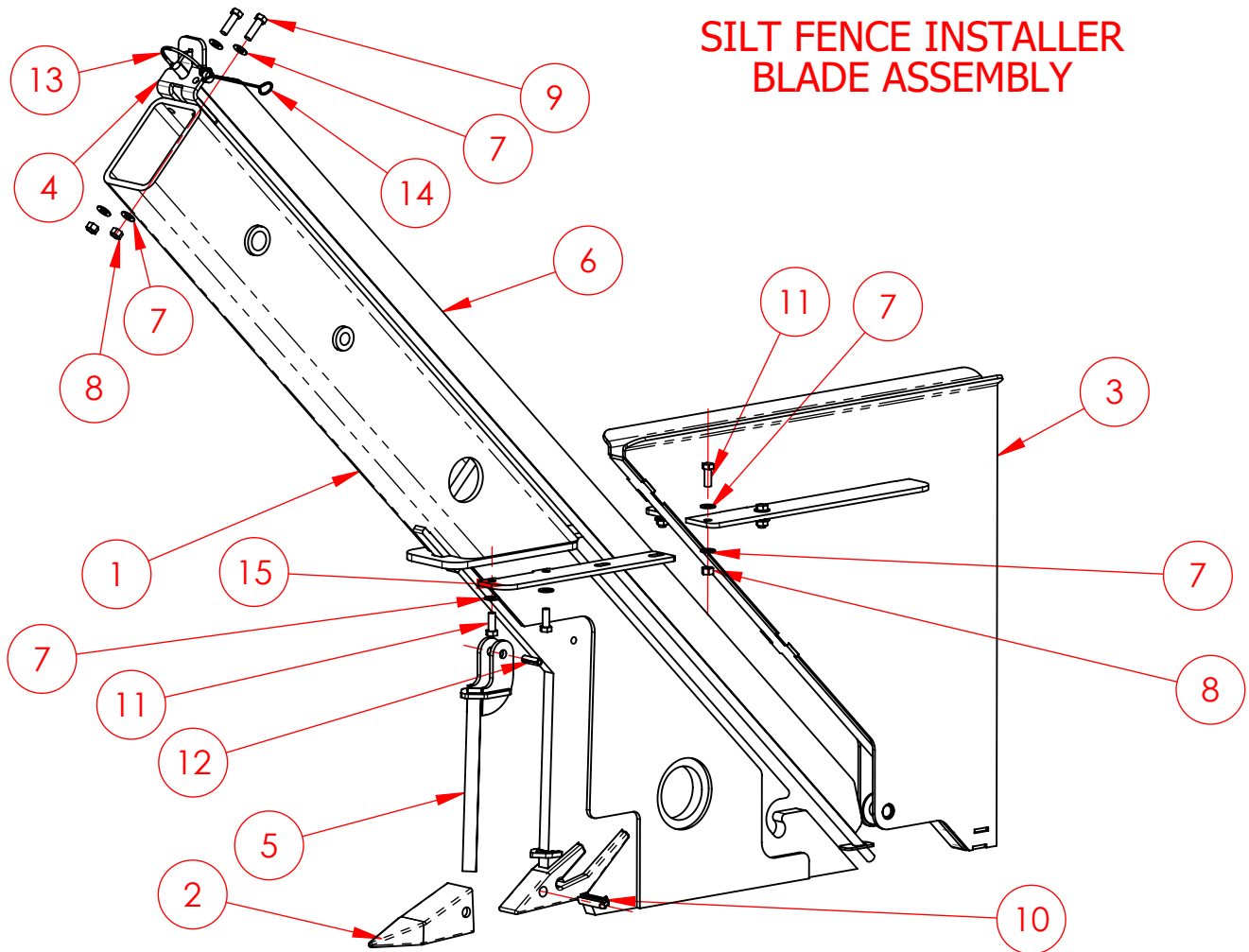
ITEM NO.	PART NUMBER	DESCRIPTION	QTY
1	11056	SFI LEG	2
2	10929	PIN - 5/8 X 3 DETENT	2
3	11149	LANYARD, 10"	2

COULTER BLADE ASSEMBLY

ITEM NO.	PART NUMBER	DESCRIPTION	QTY.
1	14416	COULTER SWIVEL BRACKET	1
2	13117	BRACKET, COULTER ARM	1
3	10438	COULTER SPRING ROD	1
4	11204	NUT - 3/4-10 GR8 JAM ZY	1
5	10108	BOLT, 3/4-10 X 2.75 GR8 ZY	1
6	10632	NUT, 3/4-10 GR8 ZY	1
7	10468	SPRING, COULTER ARM	1
8	10469	BUSHING - SPRING TENSION	1
9	10106	NUT - 3/4-10 GR8 TL ZY	1
10	10470	WASHER - 1 17/64 ID X 1 7/8 OD X 14GA	1
11	10471	COTTER PIN, 1/4 X 1 3/4	1
12	12621	HUB, 4 BOLT, 5" W/ CUPS	1
13	12718	BEARING CONE, 1.25" LM67048	1
14	12713	BEARING CONE, .75"	1
15	12714	SEAL, 2.328 X 1.50 X .390	1
16	14414	PLATE, WASHER 669 SPINDLE	1
17	12716	NUT, SLOTTED HEX, 5/8-18	1
18	10963	COTTER PIN, 1/8 X 1.75	1
19	12715	HUB CAP, N669 HUB	1
20	10928	COULTER BLADE - 16"	1
21	10062	WASHER, 1/2 SAE GR8 ZY	4
22	12165	BOLT, 1/2-20 X 1.25 GR8 ZY	4
23	10434	GREASE ZERK, 1/8 NPT ST.	2



SILT FENCE INSTALLER BLADE ASSEMBLY



ITEM NO.	PART NUMBER	DESCRIPTION	QTY
1	11195	SFI BLADE	1
2	10129	PLOW TOOTH	1
3	11004	SFI FABRIC CHUTE	1
4	11198	PLATE - FABRIC ROD	1
5	11045	SFI BLADE CUTTING EDGE	1
6	11085	FABRIC FOLD BAR	1
7	10110	WASHER, 3/8 SAE GR8 ZY	16
8	10947	NUT, 3/8-16 SLTL GR8 ZY	6
9	10113	BOLT, 3/8-16 X 1.25 GR8 ZY	2
10	10130	PLOW TOOTH PIN	1
11	10112	BOLT, 3/8-16 X 1 GR8 ZY	8
12	11135	ROLL PIN, 3/8 X 1 1/4	1
13	11148	PIN, 5/16 X 2 1/4 ROUND WIRELOCK	1
14	11149	LANYARD, 10"	1
15	11194	PLATE - CHUTE SUPPORT	2

Product & Warranty Registration Card

Model: _____ Serial Number: _____

Owner's Name: _____

Company Name: _____

Address: _____

City: _____ State: _____ Zip Code: _____

Phone number: _____

Date of purchase: _____

Name of dealer: _____

Customer Signature: _____

Date: _____

Please fill out and return this card with a copy of your sales receipt to:

Blue Diamond Attachments, LLC
4512 Anderson Road
Knoxville, TN 37918