

Tree and Post Puller

Operation and Maintenance Manual



127006, 127010



888-376-7027 | BlueDiamondAttachments.com

Register your
WARRANTY
within 30 days
of purchase



Introduction: Owner Information

Thank you for your decision to purchase a Blue Diamond® Tree and Post Puller. To ensure maximum performance of your equipment, it is mandatory that you thoroughly study the Operator's Manual and follow the recommendations. Proper operation and maintenance are essential to maximize equipment life and prevent personal injury.

Operate and maintain this equipment in a safe manner and in accordance with all applicable local, state, and federal codes, regulations and / or laws. Follow all on-product labeling and instructions.

Make sure that all personnel have read this Operator's Manual and thoroughly understand safe and correct operating, installation and maintenance procedures.

Blue Diamond® is continually working to improve its products. Blue Diamond® reserves the right to make any improvements or changes as deemed practical and possible without incurring any responsibility or obligation to make any changes or additions to equipment sold previously.

Although great care has been taken to ensure the accuracy of this publication, Blue Diamond® makes no warranty or guarantee of any kind, written or expressed, implied or otherwise with regard to the information contained within this manual. Blue Diamond® assumes no responsibility for any errors that may appear in this manual and shall not be liable under any circumstances for incidental, consequential or punitive damages in connection with, or arising from the use of this manual.

Keep this manual available for frequent reference. All new operators or owners must review the manual before using the equipment and annually thereafter. Contact your Blue Diamond® Attachments Dealer for assistance, information, or additional copies of the manual. Contact www.bluediamondattachments.com or call 888-376-7027 for a complete list of dealers in your area.

Serial Number Location:

Please record attachment information in the space provided for future reference.



Model Number: _____

Serial Number: _____

Dealer Name: _____

Dealer Number: _____

Date of Purchase: _____

The serial number plate is located as shown above on the front of the frame on the Heavy Duty model, and the top of the frame on the Standard Duty model.

Always use your serial number when requesting information or when ordering parts.

NOTE: The directions left, right, front, and rear, as mentioned throughout this manual, are as viewed from the operator's position.

Revision Date: 07.30.2025

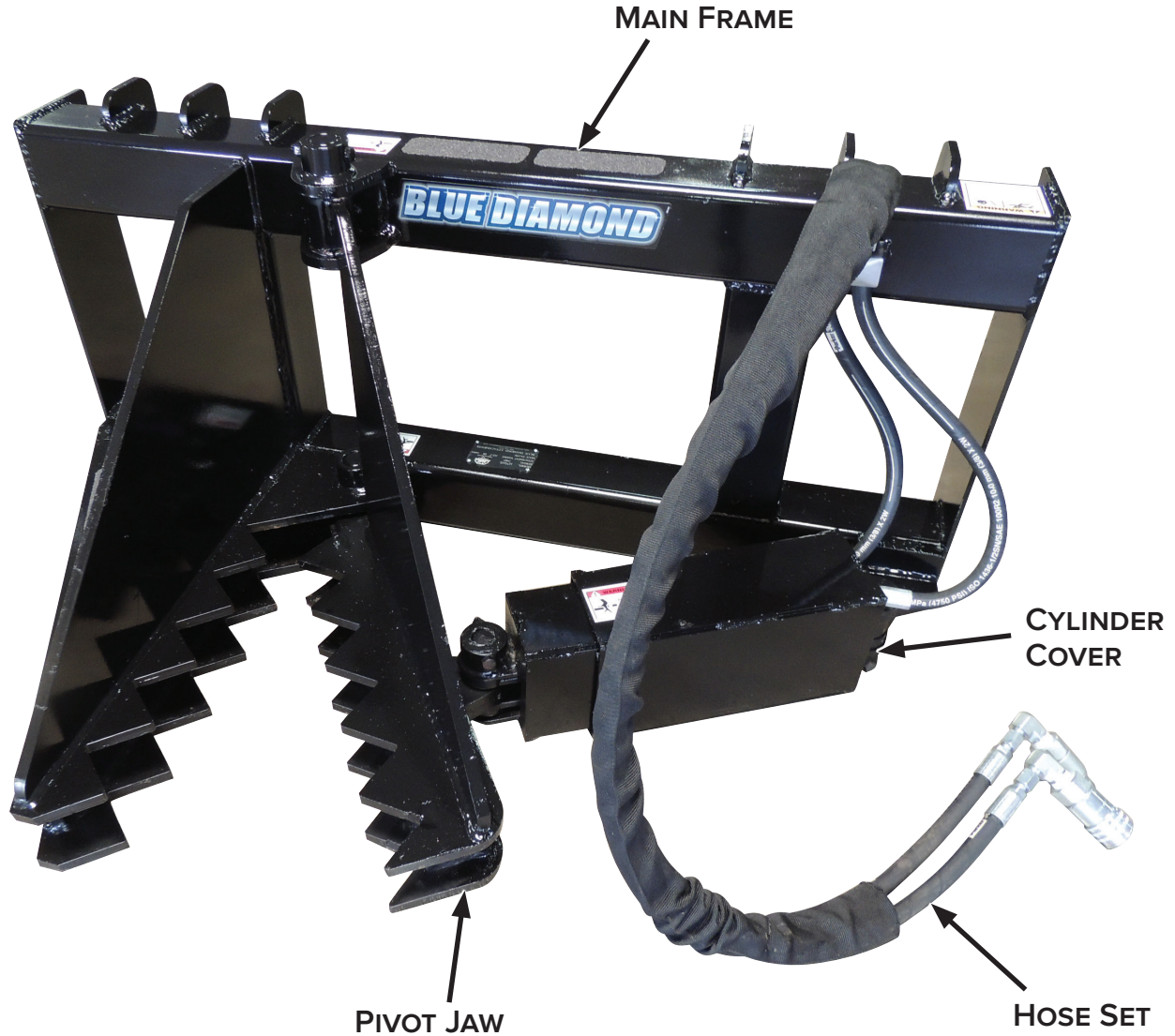
Blue Diamond® Attachments

Table of Contents

Introduction: Owner Information	2
1. Introduction.....	4
1.1 Attachment Identification	4
1.2 About this Attachment	4
1.3 Attachment Model Numbers	4
2. Safety	5
2.1 General Safety Information	5
2.2 Operators	6
2.3 Safety Guidelines	7
3. Operation	9
3.1 Pre–Operation Inspection	9
3.2 Entering & Exiting the Prime Mover	10
3.3 Attachment Installation	10
3.4 Operating the Attachment	12
4. Maintenance	13
4.1 Service Schedule	13
4.2 Before Each Use	13
4.3 Lubrication Points	13
4.4 Storage	14
4.5 Troubleshooting	14
5. Parts.....	15
5.1 Differences Between Revisions	15
5.2 Standard Duty Components – Revision 000, 001	16
5.3 Heavy Duty Components	18
5.4 Safety Decals	21
6. Specifications	22
6.1 Attachment Specifications	22
6.2 Torque Specifications – Imperial	23
Warranty	25

1. Introduction

1.1 Attachment Identification



1.2 About this Attachment

The Blue Diamond® Tree and Post Puller is a powerful attachment built for removing stubborn forestry and fence posts up to 8" in diameter. The combination of the clamping force and featured serrated teeth allow the operator to pull small trees and fence posts from the ground, removing roots and all with minimal excavation required. The attachment's design allows you to pull material from the ground, shake off loose dirt, and stack the material for easy removal from the work site.

1.3 Attachment Model Numbers

MODEL NUMBER	MODEL	MOUNT
127006	Standard Duty	Skid Steer
127006-14	Standard Duty	JD 400/500
127006-16	Standard Duty	Euro Ag
127006-25	Standard Duty	Mini Uni
127006-26	Standard Duty	Bobcat MT
127010	Heavy Duty	Skid Steer
127010-14	Heavy Duty	JD 400/500
127010-16	Heavy Duty	Euro Ag

2. Safety

2.1 General Safety Information



This **SAFETY ALERT SYMBOL** identifies important safety messages on the equipment and in the owner's manual. When you see this symbol, be alert to the possibility of personal injury and carefully read the message that follows.



The signal word **IMPORTANT** identifies procedures which must be followed to avoid damage to the machine.



The signal word **DANGER** on the machine and in the manuals indicates a hazardous situation which, if not avoided, will result in death or serious injury.



The signal word **WARNING** on the machine and in the manuals indicates a potentially hazardous situation which, if not avoided, could result in death or serious injury.



The signal word **CAUTION** on the machine and in the manuals indicates a potentially hazardous situation which, if not avoided, may result in minor or moderate injury. It may also be used to alert against unsafe practices.

NOTE: Notes are used to indicate important information. This information may be repeated in other areas of the manual.

Terminology

Host Machine, Machine, Prime Mover:

- The Tree and Post Puller can be attached to many different pieces of equipment; therefore, the terms “host machine”, “machine”, and “prime mover” will be used. Host machine and machine mean any equipment, tractor, or skid steer providing power to the attachment.

Attachment, Implement, Equipment:

- The Tree and Post Puller is the tool that is being attached to the host machine; therefore, the terms “attachment”, “implement”, and “equipment” will be used. The attachment and implement mean any tool that is being used on any equipment, tractor, or skid steer being used for different applications.

Operating Safety

- Read and follow instructions in this manual and the machine's Operator's Manual before operating.
- The manual must always remain with the machine. In case of loss or damage, request a new copy from your dealer or from Blue Diamond®.
- Strictly follow all rules prescribed by the safety pictograms/decals applied to the machine. Ensure that all safety pictograms/decals are legible. If pictograms/decals are worn, they must be replaced with new ones obtained from Blue Diamond® and placed in the position indicated by this manual.
- Before using the machine, make sure that all safety devices are installed and in good working condition. In case of damaged or missing shields, replace them immediately.
- It is absolutely forbidden to remove or alter safety devices and/or safety precautions
- Pay maximum attention to avoid any accidental contact with rotating parts of the machine.
- If the use of the machine is required at night or in conditions of reduced visibility, use the lighting system of the prime mover and an auxiliary lighting system if required.

2. Safety

2.2 Operators

Qualified Operators

The operator is a person suited to the work and who is physically and psychologically able to withstand the demands connected with operating the equipment for its intended use. The operator must not allow anyone to approach the machine while it is working and must not allow external personnel to operate the machine or attachment.

The operator is to follow the given instructions in this manual and the machine operator's manual in order to obtain maximum performance, minimal fuel consumption, and maximum safety for himself and for others.

The operator is responsible for scrupulously observing all the instructions given in this manual.



DANGER



AVOID SERIOUS INJURY OR DEATH

Operators must receive instructions before operating the machine. Untrained operators can cause serious injury or death.

For an operator to be qualified, he or she must not use drugs or alcoholic drinks which impair alertness or coordination while working. An operator who is taking prescription drugs must get medical advice to determine if he or she can safely operate a machine and the equipment. For an operator to be qualified, he or she must have read and understood the instructions of this manual, he or she must make adequate preparation for the proper use of the machine, and he or she must hold a driving license.

In case of doubt regarding the use of the machine and/or the interpretation of this manual, the operator must contact either their dealer or Blue Diamond®.

Operator Training

- Check the rules and regulations at your location. The rules may include an employer's work safety requirements. Regulations may apply to local driving requirements or use of a Slow Moving Vehicle (SMV) emblem. Regulations may identify a hazard such as a utility line.
- The new operator must start in an area without bystanders and use all the controls until he or she can operate the machine safely under all conditions of the work area.

Operator Safety

- Before starting, and during operation of the attachment, make sure there are no people or animals in the operation area.
- During operation, adjustment, maintenance, repairing, or transportation of the machine, the operator must always use appropriate Personal Protective Equipment (PPE) including but not limited to safety glasses, working gloves, dust-mask, safety helmet, and hearing protection.
- Do not operate the attachment or machine while wearing loose fitting clothing that can be entangled or caught in parts of the machine.
- Do not operate the implement when tired, not in good condition, or under the influence of alcohol or drugs.

2. Safety

2.3 Safety Guidelines

Operating Safety

- Read and follow instructions in this manual and the machine's Operator's Manual before operating.
- Under no circumstances should young children be allowed to work with this equipment.
- This equipment is dangerous to persons unfamiliar with its operation.
- Check for overhead and / or underground lines before operating equipment (if applicable).
- In addition to the design and configuration of equipment, hazard control and accident prevention are dependent upon the awareness, concern, prudence, and proper training of personnel involved in the operation, transport, maintenance, and storage of equipment.
- Check that the attachment is securely fastened to the machine.
- Make sure all the machine controls are in the NEUTRAL before starting the machine.
- Operate the equipment only from the operator's position.
- Operate the equipment according to the Operator's Manual.
- When learning to operate the equipment, do it at a slow rate in an area clear of bystanders.
- Do not permit personnel to be in the work area when operating the equipment.
- The equipment must be used ONLY on approved machines.
- Do not modify the equipment in any way. Unauthorized modification may impair the function and / or safety and could affect the life of the equipment.
- Do not make any adjustments or repairs on the equipment while the machine is running.
- Keep shields and guards in place. Replace if damaged.
- DO NOT operate equipment in poor visibility conditions such as fog, darkness, or any conditions that limit clear visibility less than 300 feet (100 m) in front of and to the sides of the equipment.
- DO NOT operate in a work area that has not been inspected for foreign debris and obstacles.
- Remove any foreign objects and clearly mark any objects that cannot be removed.
- Wear safety glasses, gloves, hearing protection, and other protective clothing when required.

Machine Requirements and Capabilities

- The machine's operator's cab should be equipped with a thermoplastic polycarbonate or similar material front window, and similar protection on the sides of the operator's cab before operating the equipment.
- Keep bystanders clear of moving parts and the work area. Keep children away.
- Do not exceed maximum PSI operating pressure as stated for each model in "6.1 Attachment Specifications" on page 22.
- Use caution on slopes and near banks and ditches to prevent overturn.

2. Safety

2.3 Safety Guidelines Cont'd

Fire Prevention Safety

- Flammable debris (leaves, grass, etc.) must be removed regularly. If flammable debris is allowed to accumulate, it can cause a fire hazard. Clean often to avoid this accumulation.
- The equipment's hydraulic cylinder compartment must be inspected every day and cleaned if necessary to prevent fire hazards and overheating.
- All fuels, most lubricants, and some coolant mixtures are flammable. Flammable fluids that are leaking or spilled onto hot surfaces or onto electrical components can cause a fire.

Transporting Safety

- Comply with state and local laws governing highway safety and movement of machinery on public roads.
- Check local laws for all highway lighting and marking requirements.
- Always yield to oncoming traffic and move to the side of the road so any following traffic may pass.
- Never allow riders on either machine or equipment.
- If transporting the equipment on a truck or trailer, make sure the equipment is properly secured to the transport vehicle.

Hydraulic System

- Check hydraulic tubes, hoses, and fittings for damage and leakage. Never use open flame or bare skin to check for leaks. Hydraulic tubes and hoses must be properly routed and have adequate support and secure clamps. Tighten or replace any parts that show leakage.
- Always clean fluid spills. Do not use gasoline or diesel fuel for cleaning parts. Use commercial nonflammable solvents.

Personal Protective Equipment



Proper Work Clothes: To help ensure your safety as a designated operator wear proper work clothes including tight fitting clothes, protective gloves, and shoes.



Hand Protection: To help ensure your safety as a designated operator wear protective gloves.



Protective Shoes: To help ensure your safety as a designated operator wear protective shoes.



Safety Helmet: To help ensure your safety as a designated operator wear a safety helmet.



Safety Helmet and Eye/Ear Protection: To help ensure your safety as a designated operator wear a safety helmet and eye/ear protection.

3. Operation

3.1 Pre–Operation Inspection

Before operating the Tree and Post Puller for the first time and each time thereafter, use the following list as a guideline during equipment inspection.



WARNING



AVOID SERIOUS INJURY OR DEATH

- Disengage machine's auxiliary hydraulics, engage the machine's parking brake, stop the engine, and make sure all moving parts are completely stopped before connecting, disconnecting, adjusting, or cleaning equipment.
- Always keep shields and guards in place when using the equipment.
- Disengage machine's auxiliary hydraulics for road travel.
- Keep hands, feet, and clothing away from rotating parts.

- Lubricate the attachment per the schedule outlined in the Maintenance section. See "4.3 Lubrication Points" on page 13.
- Check the attachment mounting frame for damage or cracks.
- Check that all shields and guards are in place.
- Check for loose bolts and tighten them if necessary.
- Check all welds on the attachment for wear and damage each time the attachment is removed from the machine.
- Check for damaged or missing safety decals. Replace if necessary.
- Inspect the machine's mounting frame. (See the machine's Operator's Manual for inspecting the mounting frame.) Replace any parts that are damaged, bent, or missing. Keep all fasteners tight. Look for cracked welds.
- Verify that the attachment is properly connected to the machine.



WARNING



Leaking fluids under pressure can enter the skin and cause serious injury or death. Immediate medical attention is required.

Wear goggles. Use cardboard to check for leaks.

- Check the condition of all hydraulic components for leaks. Repair as required.

NOTE: Do not operate with hydraulic leaks.

3. Operation

3.2 Entering & Exiting the Prime Mover



See the machine's Operator's Manual for detailed information on operating the loader.

Entering the Operator's Position

Use the safety treads, handles, and steps on the attachment and machine to enter the operator's position. Always maintain three (3) points of contact.

When in the operator's position, lower safety seat bar, start the engine, and release the parking brake.

Leaving the Operator's Position



AVOID SERIOUS INJURY OR DEATH

- Always park on a flat, level surface.
- Lower lift arms and place attachment flat on the ground.
- Place all controls in NEUTRAL.
- Engage the parking brake.
- Stop the engine, and remove the key.
- Wait for all moving parts to stop.

SEE MACHINE'S OPERATOR'S MANUAL FOR ADDITIONAL INFORMATION.

Park the machine / attachment on a flat, level surface.

Place all controls in neutral, engage the parking brake, stop the engine, and wait for all moving parts to stop. Leave the operator's position.

3.3 Attachment Installation

Connecting Attachment to the Machine



CRUSH HAZARD

- Before moving the machine, look in all directions and make sure no bystanders, especially small children are in the work area. Do not allow anyone between the machine and attachment when approaching the attachment for connecting.
- Keep fingers and hands out of pinch points when connecting and disconnecting the attachment.

Before connecting to the attachment, inspect the machine's mounting plate. (See the machine's Operator's Manual for inspecting the mounting frame).

Enter the operator's position. See "Entering the Operator's Position" on page 10.

Drive the machine slowly forward, until the top edge of the machine's mounting plate is under the top flange of the attachment mounting frame.

Slowly tilt the machine's mounting plate back until the attachment mounting frame fully contacts the front of the machine's mounting plate.

Leave the operator's position. See "Leaving the Operator's Position" on page 10.

3. Operation

3.3 Attachment Installation Cont'd

Connecting Attachment to the Machine Cont'd



WARNING



AVOID SERIOUS INJURY OR DEATH

The locking pins / wedges must extend through the holes in the attachment mounting frame. Failure to secure locking pins / wedges can allow attachment to come off.

**SEE MACHINE'S OPERATOR'S MANUAL FOR
ADDITIONAL INFORMATION.**

Engage attachment locking levers / wedges (See the machine's Operator's Manual for detailed information).

Connecting Hydraulic Hoses



IMPORTANT



Thoroughly clean the quick couplers before making connections. Dirt can quickly damage the hydraulic system.

Remove dirt or debris from the male and female couplers. Visually inspect the couplers for corroding, cracking, damage, or excessive wear. Replace as needed.

Connect the attachment hydraulic hoses to the machine.

Pull on each hose to verify full connection is made.

Disconnecting Hydraulic Hoses



WARNING



AVOID SERIOUS INJURY OR DEATH

Hydraulic fluid, tubes, fittings, and quick couplers can get hot during operation. Be careful when connecting and disconnecting hydraulic hoses.

Relieve auxiliary hydraulic pressure. (See the machine's Operator's Manual for correct procedure.)

Disconnect attachment hydraulic hoses from the machine.

Disconnecting Attachment From the Machine

Relieve auxiliary hydraulic pressure. (See the machine's Operator's Manual for correct procedure.)

Park the machine and attachment on a flat, level surface. Lower the attachment flat on the ground.

Leave the operator's position. See "Leaving the Operator's Position" on page 10.

Disconnect attachment hydraulic hoses from the machine.

Disengage locking pins / wedges. (See the machine's Operator's Manual for correct procedure.)

Enter the operator's position. See "Entering the Operator's Position" on page 10.

Slowly tilt the machine's mounting plate forward until the attachment mounting frame is free from the machine's mounting plate.

Drive the machine slowly backward, away from the attachment.

3. Operation

3.4 Operating the Attachment



WARNING



Never allow riders on the attachment.

Engaging the Attachment for the First Time



IMPORTANT



If this is the initial startup with this attachment on this machine, check the host machine's hydraulic oil level and add oil, if necessary, before and after doing steps 1–2 below.

After starting the machine, lift the attachment 6" off the ground surface:

1. With the machine's engine RPMs just above idle, slowly engage the auxiliary hydraulics to open the jaw. Move the auxiliary control pedal, lever, or switch in the opposite direction to close the jaw. Repeat this three (3) times to purge air from the hydraulic system.
2. Lower the attachment to the ground and shut off the host machine's engine. Leave the operator's position. See "Leaving the Operator's Position" on page 10.
3. Check the machine's hydraulic oil level, and add oil if necessary.
4. Inspect the attachment's hydraulic system for any noticeable leaks. If leaks are present, correct before continuing operation.

Operating the Tree and Post Puller



WARNING



AVOID SERIOUS INJURY OR DEATH

Use extreme caution when moving to keep from hitting yourself or bystanders. Close the tines when not moving material.

NOTE: These steps describe the process to remove a small tree. The steps are the same for any shrub, post, or similar item.

1. Install the attachment onto the host machine. (See "Connecting Attachment to the Machine" on page 10.)
2. Enter the operator's position. (See "Entering the Operator's Position" on page 10.)
3. Raise the attachment slightly off the ground.
4. Cycle the attachment's cylinder several times to purge the hydraulic system of air. (See the machine's Operator's Manual for precise instructions in regards to these functions.)
5. To pull up a tree, open the jaw to a width larger than the base of the trunk.
6. Drive forward and position the trunk between the jaws and as close to the mount frame as possible. Close the jaw until the trunk is securely held, and use the loader arms to pull up the tree.

NOTE: Depending on the difficulty, taking a new grip from a different direction or shaking the tree may help remove it.

NOTE: Some material may be more difficult than other material. For instance, not all 8" trees will be easily pulled.

4. Maintenance

4.1 Service Schedule

DESCRIPTION	SERVICE PROCEDURES					
	Check	Clean	Lube	Change	Adjust	Drain
Daily Maintenance (or every 8 hours)						
Hydraulic Fittings	•					
Hydraulic Hoses	•					
Hydraulic Cylinder	•					
Frame (cracks, bends, or excessive wear)	•	•				
All Hardware	•					
Covers and Guards	•					
Pivot Pins	•		•			

4.2 Before Each Use

Before each use, perform the following:

- Perform the “3.1 Pre–Operation Inspection” on page 9 by walking around the equipment.
- Perform a daily inspection as indicated in “4.1 Service Schedule” on page 13.
- Verify that the proper attachment is being used for the task at hand. Use the Tree and Post Puller for tree, shrub, or post removal only.

Inspect the attachment daily before each use. It is also recommended to inspect the attachment after extreme use or damage. Use “4.1 Service Schedule” on page 13 as a guideline.

4.3 Lubrication Points

Grease all pivot points every eight (8) hours of use to prevent excess wear on the pins.

The Tree and Post Puller has grease points on each cylinder pin and jaw pivot pin. The Standard Duty model has three (3) grease points; the Heavy Duty model has four (4).

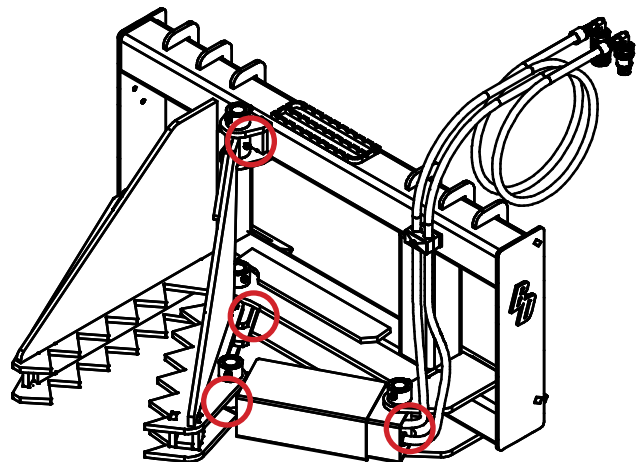


Figure 1

4. Maintenance

4.4 Storage

Storage

Sometimes it may be necessary to store your Tree and Post Puller for an extended period of time. Below is a list of items to perform before storage.

- Make sure the hydraulic hose couplers are capped, plugged, or connected to each other.
- Thoroughly wash the attachment before storing it for long periods.
- Lubricate the attachment.
- Coat the exposed portion of the cylinder with oil.
- Check for loose hardware, missing guards, or damaged parts.
- Check for damaged or missing decals. Replace if necessary.
- Replace worn or damaged parts.
- Place the attachment flat on the ground in a dry, protected shelter.

NOTE: In muddy conditions or to prevent the attachment from freezing to the ground, put the attachment on planks or blocks before removing the attachment from the machine.

Return to Service

After the Tree and Post Puller has been in storage, it is necessary to follow a list of items to return the attachment to service.

- Lubricate the attachment.
- Clean the exposed portion of the cylinder rod and apply a light coating of oil.
- Connect and operate the attachment and check for correct function.
- Check for leaks. Repair as needed.

4.5 Troubleshooting

PROBLEM	CAUSE	SOLUTION
Hydraulic oil level goes down during operation.	Leaking hoses on the attachment	Investigate and repair.
	Leak in the prime mover hydraulic system	Investigate and repair.
Jaw does not open or close.	Quick disconnects not connected	Check and recouple quick disconnects.
	Hoses damaged	Check for a smashed or kinked hose. Replace if found.
	Auxiliary hydraulics not engaged	Engage hydraulics
	Skid steer auxiliary circuit inoperative	Investigate and repair.
Jaw moves abnormally slow.	Restricted hose	Check for damaged hose between skid steer and cylinder. If damaged, replace the hose.
	Bad circuit relief on skid steer	Investigate and repair.
	Auxiliary valve spool on skid steer not shifting properly	Investigate and repair.
	Cylinder seals bypassing	Have cylinder repacked or replaced.

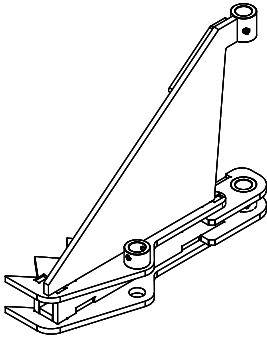
5. Parts

5.1 Differences Between Revisions

Standard Duty Revision 000, 001

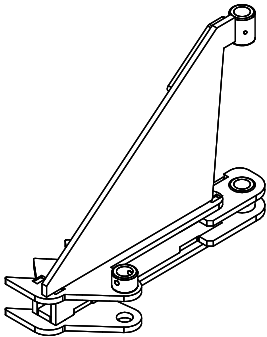
Differences between revisions do not affect part compatibility.

Heavy Duty Revision 001, 002, 003



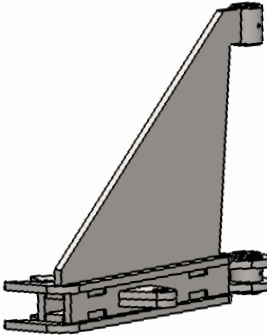
Cylinder rod pin midway along the jaw. Two ears for welded style cylinder.

Heavy Duty Revision 000



Cylinder rod pin on the end of the jaw. Two ears for welded style cylinder.

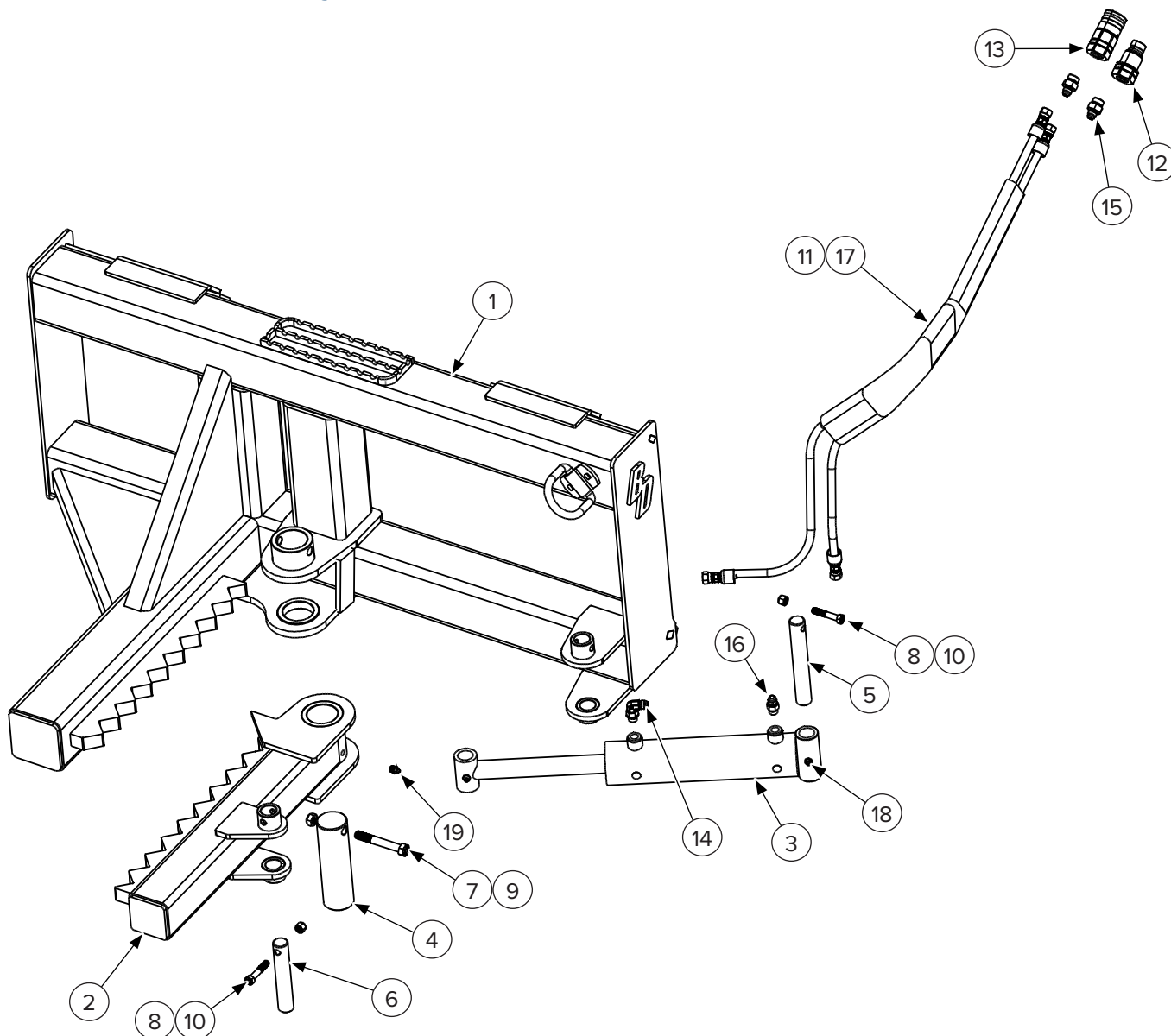
Heavy Duty Revision 999



Cylinder rod pin midway along the jaw. Single ear for tie rod style cylinder.

5. Parts

5.2 Standard Duty Components – Revision 000, 001



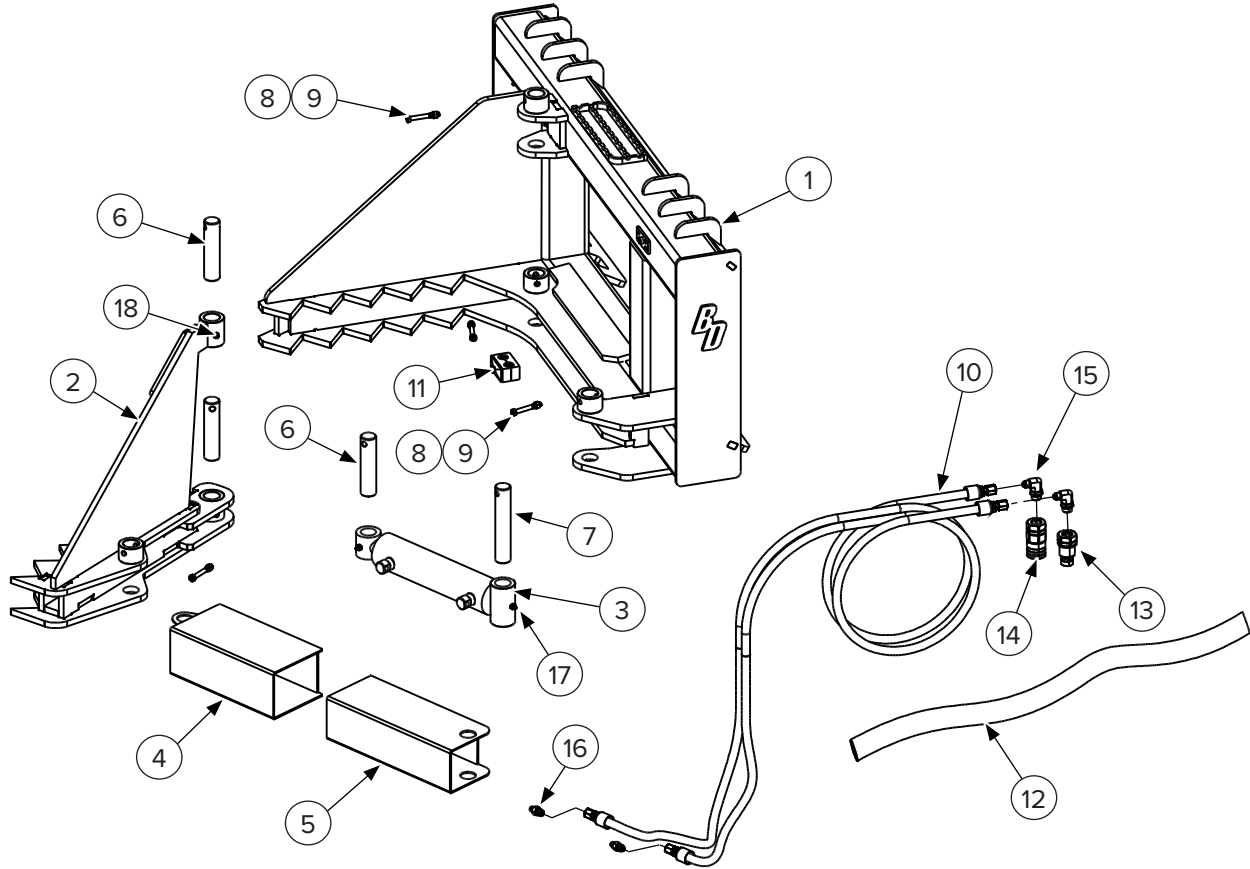
5. Parts

5.2 Standard Duty Components – Revision 000, 001 Cont'd

ITEM	PART NUMBER	DESCRIPTION	QTY
1	227100	Main Frame Weldment	1
2	227101	Pivot Jaw Weldment	1
3	227105	Cylinder 2.5" Bore x 8" Stroke x 14.5" Retracted Length	1
4	227102	2" OD x 6 3/4" Long Pivot Jaw Pin	1
5	227104	1" OD x 6 3/4" Long Body End Cylinder Pin	1
6	208999	1" OD x 5 1/2" Long Rod End Cylinder Pin	1
7	299436	1/2"-13 x 3 1/2" Bolt Hex Head	1
8	299328	3/8"-16 x 2" Bolt Hex Head	2
9	299655	1/2"-13 Stover Locknut	1
10	208550	3/8"-16 x 2 1/2" Nylock Nut	2
11	227106	Machine Hose Set, 98" & 106" OAL 1/4" ID Straight Female #6 JIC Swivel Both Ends with Sleeve	1
12	224010	Coupler, Male Flat Face Straight 1/2" Body Female #8 O-Ring Boss	1
13	224009	Coupler, Female Flat Face Straight 1/2" Body Female #8 O-Ring Boss	1
14	295030-M06ORB-M06JIC	Hydraulic 90 Degree Fitting Male #6 O-Ring Boss to Male #6 JIC	1
15	295010-M06JIC-M08ORB	Hydraulic Straight Fitting Male #6 JIC to Male #8 O-Ring Boss	2
16	295010-M06JIC-M06ORB	Hydraulic Straight Fitting Male #6 JIC to Male #6 O-Ring Boss	1
17	206327	Hose Protection Sleeve (Included in 227106)	6 ft
18	297007	Cylinder Pivot Pin Straight Grease Zerk Fitting – M6 x 1.0mm	2
19	297008	Clamp Pivot Pin 5/16"-24 Straight Grease Zerk Fitting	1

5. Parts

5.3 Heavy Duty Components



Revision 001, 002, 003

ITEM	PART NUMBER	DESCRIPTION	QTY
1	227000	Main Frame Weldment	1
2	227009	Pivot Jaw Weldment	1
3	227004	Cylinder 2.5" Bore x 8" Stroke x 15" Retracted Length	1
4	227011	Outer Cylinder Cover	1
5	227002	Inner Cylinder Cover	1
6	206343	1" OD x 5 1/4" Long Jaw and Rod End Cylinder Pivot Pin	3
7	227015	1" OD x 6 3/4" Long Body End Cylinder Pivot Pin	1
8	299359	5/16"-18 x 2 1/2" Bolt Hex Head	4
9	299620	5/16"-18 Nylock Nut	4
10	227010	Machine Hose Set, 84" & 96" OAL 3/8" ID with Sleeve	1
11	206819	Hose Clamp, Fits 3/4" OD Dual Hoses (5/16"-18 X 1 3/4" Bolt)	1
12	206327	Hose Sleeve (Included in 227010)	4 ft
13	224010	Coupler, Male Flat Face Straight 1/2" Body Female #8 O-Ring Boss	1
14	224009	Coupler, Female Flat Face Straight 1/2" Body Female #8 O-Ring Boss	1
15	295030-M06JIC-M08ORB	Hydraulic 90 Degree Fitting Male #6 JIC to Male #8 O-Ring Boss	2
16	295010-M06JIC-M04ORB	Hydraulic Straight Fitting Male #6 JIC to Male #4 O-Ring Boss	2
17	203072	Cylinder Pivot Pin Straight Grease Zerk Fitting - 1/4"-28	2
18	299016	Clamp Pivot Pin Straight Grease Zerk Fitting - 1/8" NPT	2

5. Parts

5.3 Heavy Duty Components Cont'd

Revision 000

ITEM	PART NUMBER	DESCRIPTION	QTY
1	227000	Main Frame Weldment	1
2	227001	Pivot Jaw Weldment	1
3	227004	Welded Cylinder 2.5" Bore x 8" Stroke x 15" Retracted Length	1
4	227003	Outer Cylinder Cover	1
5	227002	Inner Cylinder Cover	1
6	206343	1" OD x 5 1/4" Long Jaw and Rod End Cylinder Pivot Pin	3
7	227015	1" OD x 6 3/4" Long Body End Cylinder Pivot Pin	1
8	299329	3/8"-16 x 2 1/2" Bolt Hex Head	4
9	208550	3/8"-16 x 2 1/2" Stover Locknut	4
10	227010	Machine Hose Set, 84" & 96" OAL 3/8" ID with Sleeve	1
11	206819	Hose Clamp, Fits 3/4" OD Dual Hoses (5/16"-18 X 1 3/4" Bolt)	1
12	206327	Hose Sleeve (Included in 227010)	4 ft
13	224006	Coupler, Male Flat Face Straight 1/2" Body Female #8 NPT	1
14	224005	Coupler, Female Flat Face Straight 1/2" Body Female #8 NPT	1
15	295030-M06JIC-M08NPT	Hydraulic 90 Degree Fitting Male #6 JIC to Male #8 O-Ring Boss	2
16	295010-M06JIC-M04ORB	Hydraulic Straight Fitting Male #6 JIC to Male #4 O-Ring Boss	2
17	203072	Cylinder Pivot Pin Straight Grease Zerk Fitting - 1/4"-28	2
18	203072	Clamp Pivot Pin Straight Grease Zerk Fitting - 1/4"-28	2

5. Parts

5.3 Heavy Duty Components Cont'd

Revision 999

ITEM	PART NUMBER	DESCRIPTION	QTY
1	—	Main Frame Weldment	1
2	—	Pivot Jaw Weldment	1
3	227005	Tie Rod Cylinder	1
4	227007	Outer Cylinder Cover	1
5	227006	Inner Cylinder Cover	1
6	206343	1" OD x 5 1/4" Long Jaw and Rod End Cylinder Pivot Pin	3
7	227015	1" OD x 6 3/4" Long Body End Cylinder Pivot Pin	1
8	299329	3/8"—16 x 2 1/2" Bolt Hex Head	4
9	208550	3/8"—16 x 2 1/2" Stover Locknut	4
10	227010	Machine Hose Set, 84" & 96" OAL 3/8" ID with Sleeve	1
11	206819	Hose Clamp, Fits 3/4" OD Dual Hoses (5/16"—18 X 1 3/4" Bolt)	1
12	206327	Hose Sleeve (Included in 227010)	4 ft
13	224006	Coupler, Male Flat Face Straight 1/2" Body Female #8 NPT	1
14	224005	Coupler, Female Flat Face Straight 1/2" Body Female #8 NPT	1
15	295030-M06JIC-M08NPT	Hydraulic 90 Degree Fitting Male #6 JIC to Male #8 O-Ring Boss	2
16	—	Cylinder Fittings	2
17	203072	Cylinder Pivot Pin Straight Grease Zerk Fitting – 1/4"—28	2
18	203072	Clamp Pivot Pin Straight Grease Zerk Fitting – 1/4"—28	2

5. Parts

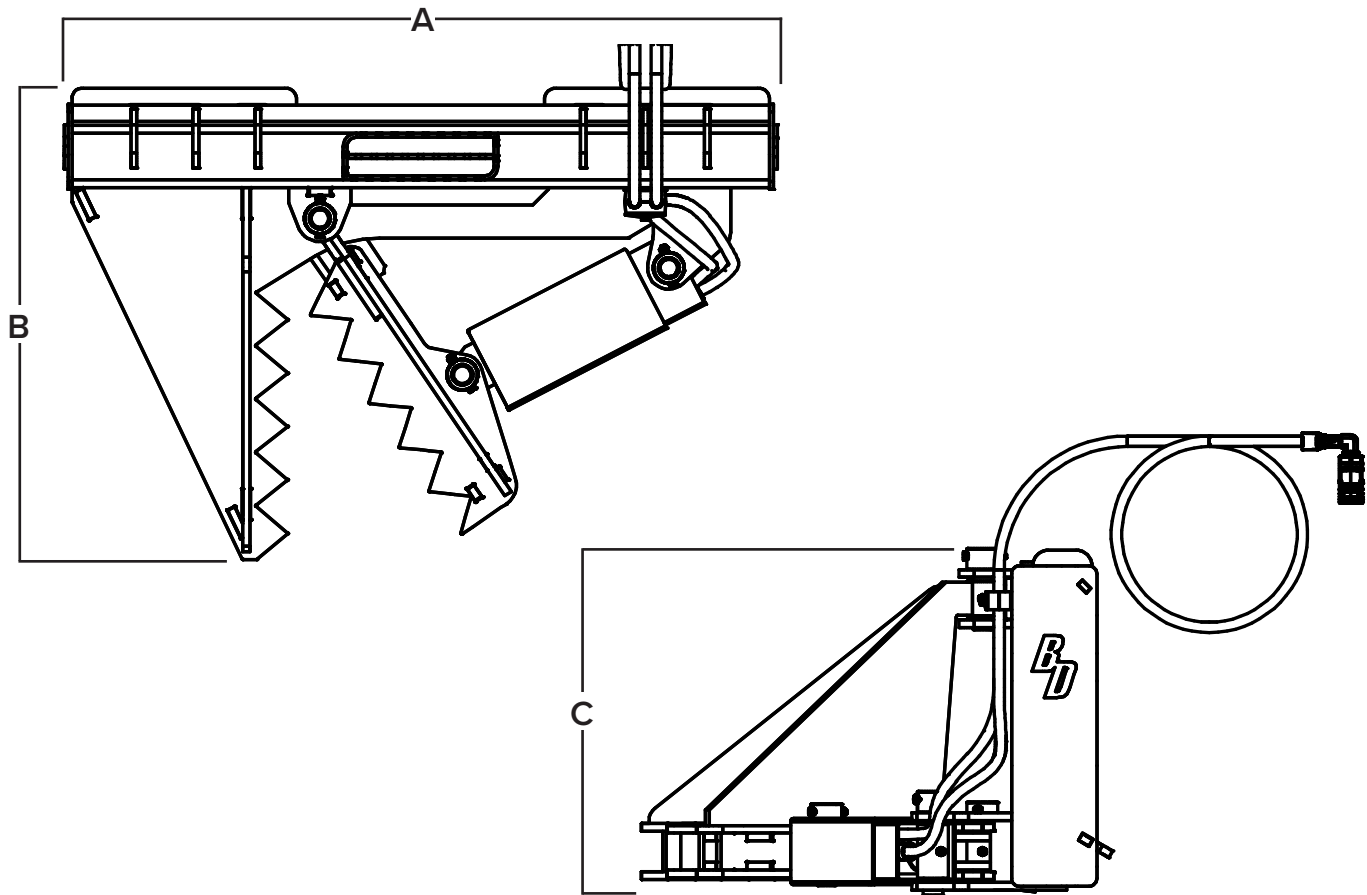
5.4 Safety Decals



ITEM	PART NUMBER	DESCRIPTION	QTY
1	BD-001	3.0" x 3.0" Decal, Read Owner's Manual	1
2	BD-060	2.4375" x 3.375" Decal, Blue Diamond Attachments	2
3	BD-092	1.5" x 2.0" Decal, Warranty Registration QR	1
4	BD-123	3.0" x 3.0" Decal, High Pressure Fluid Hazard	1
5	BD-004	2.0" x 4.0" Decal, Grease All Fitting Every 8 Hours	1

6. Specifications

6.1 Attachment Specifications



DESCRIPTION	127006	127010 Rev 999, 000	127010 Rev 001, 002, 003
Overall Width (A)	46"		
Overall Length (B)	31"		
Overall Height (C)	19"	22"	
Clamp Length	19"		
Clamp Opening	12"	9"	11"
Maximum Tree Size	8"		
Weight	291 lbs	432 lbs	
Maximum Pressure	4000 PSI	3200 PSI	
Maximum Flow	Standard Flow Only		

6. Specifications

6.2 Torque Specifications – Imperial

Standard Hardware and Locknuts

BOLT TYPE	SAE GRADE 5		SAE GRADE 8		LOCKNUTS			
Nominal Size	Plated or Unplated Silver	Plated W/ ZnCr Gold	Plated or Unplated Silver	Plated W/ ZnCr Gold	Plated or Unplated Silver	Plated W/ ZnCr Gold	W/ Grade 5 Bolt	W/ Grade 8 Bolt
1/4	4.6 lbf•ft	6.0 lbf•ft	7.2 lbf•ft	9.3 lbf•ft	10.0 lbf•ft	13.1 lbf•ft	5.1 lbf•ft	7.2 lbf•ft
	6.2 N•m	8.1 N•m	9.7 N•m	12.6 N•m	13.6 N•m	17.7 N•m	6.9 N•m	9.8 N•m
5/16	9.6 lbf•ft	12.5 lbf•ft	14.8 lbf•ft	19.2 lbf•ft	20.7 lbf•ft	27.3 lbf•ft	10.3 lbf•ft	14.8 lbf•ft
	13 N•m	17 N•m	20 N•m	26 N•m	28 N•m	37 N•m	14 N•m	20 N•m
3/8	17 lbf•ft	22 lbf•ft	26 lbf•ft	34 lbf•ft	37 lbf•ft	48 lbf•ft	19 lbf•ft	26 lbf•ft
	23 N•m	30 N•m	35 N•m	46 N•m	50 N•m	65 N•m	26 N•m	35 N•m
7/16	27 lbf•ft	35 lbf•ft	42 lbf•ft	54 lbf•ft	59 lbf•ft	77 lbf•ft	30 lbf•ft	42 lbf•ft
	37 N•m	47 N•m	57 N•m	73 N•m	80 N•m	104 N•m	41 N•m	57 N•m
1/2	42 lbf•ft	54 lbf•ft	64 lbf•ft	83 lbf•ft	91 lbf•ft	117 lbf•ft	45 lbf•ft	65 lbf•ft
	57 N•m	73 N•m	87 N•m	113 N•m	123 N•m	159 N•m	61 N•m	88 N•m
9/16	60 lbf•ft	77 lbf•ft	92 lbf•ft	120 lbf•ft	130 lbf•ft	169 lbf•ft	65 lbf•ft	92 lbf•ft
	81 N•m	104 N•m	125 N•m	163 N•m	176 N•m	229 N•m	88 N•m	125 N•m
5/8	83 lbf•ft	107 lbf•ft	128 lbf•ft	165 lbf•ft	180 lbf•ft	233 lbf•ft	90 lbf•ft	127 lbf•ft
	112 N•m	145 N•m	174 N•m	224 N•m	244 N•m	316 N•m	122 N•m	172 N•m
3/4	146 lbf•ft	189 lbf•ft	226 lbf•ft	293 lbf•ft	319 lbf•ft	413 lbf•ft	160 lbf•ft	226 lbf•ft
	198 N•m	256 N•m	306 N•m	397 N•m	432 N•m	560 N•m	217 N•m	306 N•m
7/8	142 lbf•ft	183 lbf•ft	365 lbf•ft	473 lbf•ft	515 lbf•ft	667 lbf•ft	258 lbf•ft	364 lbf•ft
	193 N•m	248 N•m	495 N•m	641 N•m	698 N•m	904 N•m	350 N•m	494 N•m
1	213 lbf•ft	275 lbf•ft	547 lbf•ft	708 lbf•ft	773 lbf•ft	1000 lbf•ft	386 lbf•ft	545 lbf•ft
	289 N•m	373 N•m	742 N•m	960 N•m	1048 N•m	1356 N•m	523 N•m	739 N•m

**This page intentionally
left blank**



Warranty

MANUFACTURER'S LIMITED WARRANTY

BLUE DIAMOND® ATTACHMENTS, a manufacturer of quality attachments, warrants new BLUE DIAMOND® ATTACHMENTS products and/or attachments at the time of delivery to the original purchaser, to be free from defects in material and workmanship when properly set up and operated in accordance with the recommendations set forth by BLUE DIAMOND® ATTACHMENTS, LLC.

BLUE DIAMOND® ATTACHMENTS liability for any defect with respect to accepted goods shall be limited to repairing the goods at a BLUE DIAMOND® ATTACHMENTS designated location or at an authorized dealer location, or replacing them, as BLUE DIAMOND® ATTACHMENTS shall elect. The above shall be in accordance with BLUE DIAMOND® ATTACHMENTS warranty adjustment policies. BLUE DIAMOND® ATTACHMENTS obligation shall terminate twelve (12) months for the Tree and Post Puller after the delivery of the goods to original purchaser.

This warranty shall not apply to any machine or attachment which shall have been repaired or altered outside the BLUE DIAMOND® ATTACHMENTS factory or authorized BLUE DIAMOND® ATTACHMENTS dealership or in any way so as in BLUE DIAMOND® ATTACHMENTS judgment, to affect its stability or reliability, nor which has been subject to misuse, negligence or accident beyond the company recommended machine rated capacity.

WARRANTY CLAIM

To submit a warranty claim, a claim must be filed with BLUE DIAMOND® ATTACHMENTS before work is performed. The BLUE DIAMOND® PRODUCT SUPPORT TEAM will advise repairs and applicable parts exchanges. Tampering with the failed part may void the warranty. This warranty does not include freight or delivery charges incurred when returning machinery for servicing. Dealer mileage, service calls, and pickup/delivery charges are the customers' responsibility.

EXCLUSIONS OF WARRANTY

Except as otherwise expressly stated herein, BLUE DIAMOND® ATTACHMENTS makes no representation or warranty of any kind, expressed or implied, AND MAKES NO WARRANTY OF MERCHANTABILITY IN RESPECT TO ITS MACHINERY AND/OR ATTACHMENTS ARE FIT FOR ANY PARTICULAR PURPOSE. BLUE DIAMOND® ATTACHMENTS shall not be liable for incidental or consequential damages for any breach or warranty, including but not limited to inconvenience, rental of replacement equipment, loss of profits or other commercial loss. Upon purchase, the buyer assumes all liability for all personal injury and property resulting from the handling, possession, or use of the goods by the buyer.

No agent, employee, or representative of BLUE DIAMOND® ATTACHMENTS has any authority to bind BLUE DIAMOND® ATTACHMENTS to any affirmation, representation, or warranty concerning its machinery and/or attachments except as specifically set forth herein.

This warranty policy supersedes any previous documents. Please see bluediamondattachments.com/warranty-policies for the most up to date warranty information.

NOTE: Blue Diamond® Attachments is a trademark of BLUE DIAMOND® ATTACHMENTS



QUALITY | DEPENDABILITY | INTEGRITY

Blue Diamond® Attachments
4512 Anderson Road, Knoxville, TN 37918
888-376-7027