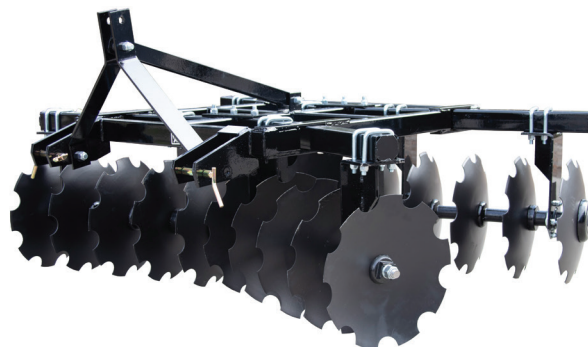


DISC HARROW



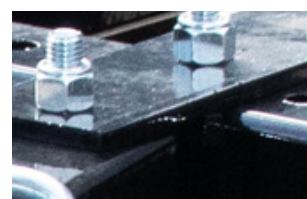
The Blue Diamond® Disc Harrow is for medium duty applications with notched discs that easily break up and redistribute cultivated topsoil. They will easily meet the needs of commercial landscapers, larger nurseries and gardens, as well as small farms. They are available in 60", 72", and 84" cutting widths to fit 30-60 hp tractors with a Category 1 quick hitch.



FEATURES INCLUDE

- Sealed bearings for long life
- Heavy duty tube frame construction
- 2-year warranty
- Pivot plate that allows you to change the angle of the gang tubes on top of the front and rear center mount
- 7 1/2" disc blade spacing for finer soil finishing
- 18" notched disc blades for maximum cutting action

PART NUMBER	445010	445015	445020
MODEL	5'	6'	7'
HORSEPOWER	30-40	35-45	40-60
CUTTING WIDTH	60"	72"	84"
WEIGHT	650 lbs	700 lbs	750 lbs
NUMBER OF DISC BLADES	16	20	24
DISC BLADE SIZE	18"		
DISC BLADE SPACING	7.5"		
BEARINGS	Sealed		
QUICK-HITCH COMPATIBLE	Yes		
HITCH	Category 1		



Pivot plate that allows you to adjust the angles of gang tubes



18" notched disc blades

888-376-7027

info@bluediamondattachments.com

BlueDiamondAttachments.com

888-377-7027

4512 Anderson Rd., Knoxville, TN 37918

Monday - Friday, 8am - 5pm EST

