

NURSERY FORK SEVERE DUTY



The **Blue Diamond® Severe Duty Nursery Forks** is purpose-built for landscaping, nursery, and tree care professionals who need a safe, efficient way to transport trees, large shrubs, potted plants, rocks up to 3,000 pounds. Featuring long tapered forks, a hydraulically adjustable clamp, and a curved backrest with protective foam padding, this attachment allows operators to securely handle valuable nursery stock while minimizing damage during transport.

Designed for maximum durability and operator convenience, the Severe Duty model incorporates internally protected hydraulic hoses, a heavy-duty hose saver spring, greaseable pivots, and cylinder protection to withstand demanding jobsite conditions. With adjustable fork spacing from 4 to 54 inches at the tips, operators can quickly adapt to changing material sizes without ever leaving the cab.

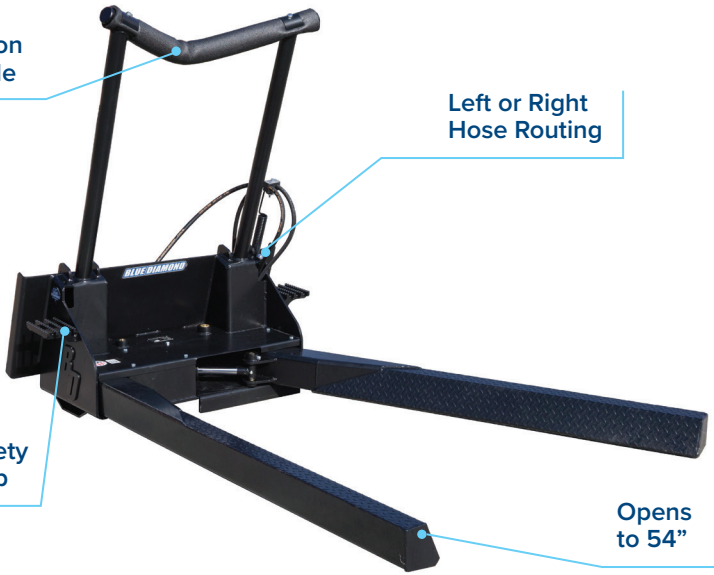
Complete with hydraulic hoses and flat-face couplers and a universal skid steer quick attach mount, the Blue Diamond Severe Duty Nursery Fork is ready to work right off the trailer.

Foam Tree Trunk Protection on Cradle

Left or Right Hose Routing

Safety Step

Opens to 54"

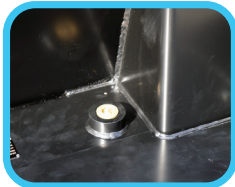


KEY FEATURES

- ◆ 65" fork length
- ◆ 3,000 lb lift capacity
- ◆ 54" maximum opening width
- ◆ 4" minimum closing width
- ◆ Protected hydraulic cylinder
- ◆ Internal protected hose routing
- ◆ Greaseable pivots
- ◆ Heavy-duty hose saver spring
- ◆ Left or right hose routing
- ◆ Integrated safety step on frame
- ◆ Textured safety step on frame
- ◆ Tread plate on fork surface for improved material grip
- ◆ Foam tree trunk protection on 61" tall, curved backrest
- ◆ Complete with hydraulic hoses and flat-face couplers
- ◆ Universal skid steer mount



Protected cylinder cover



Greaseable pivot points



Hose saver spring

PART NUMBER	114095
MODEL	HYDRAULIC NURSERY FORK, SEVERE DUTY
FORK OPENING (CLOSED TO OPEN)	6" TO 54"
LIFT CAPACITY	3,000 LBS
WEIGHT	693 LBS

