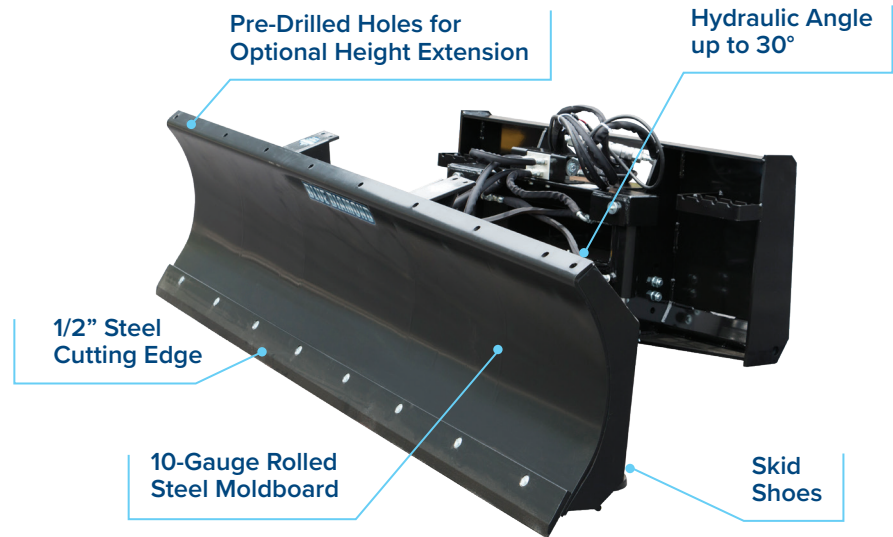


SIX WAY DOZER BLADE



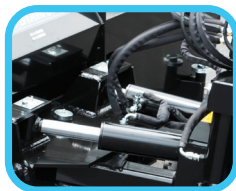
The **Blue Diamond® Skid Steer Heavy Duty Six Way Dozer Blade** is engineered for operators who demand rugged performance, precision control, and versatile functionality. Designed for high-horsepower skid steers, this professional-grade blade tackles dirt, snow, rock, and material movement with ease. Its proven pivot system allows hydraulic tilt up to 10° and angle up to 30°, giving operators precise grading and contouring capabilities. With a universal skid steer mount and seamless electro-hydraulic controls, this blade puts full control at your fingertips while maintaining superior visibility and durability.



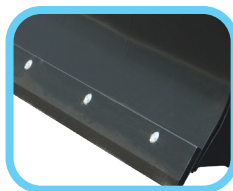
Built for maximum efficiency, the 6-Way Dozer Blade features a heavy-duty rolled steel moldboard, replaceable 1/2" cutting edge, and optional 8" height extension for increased material capacity. Skid shoes protect the blade and work surface, while trip override pins and optional trip springs make it easy to convert to a snow plow. Every component, from cylinder pins to hydraulic and electrical protections, is designed to withstand tough conditions and extend service life. Available in 6', 7', and 8' widths and proudly made in the USA with American steel, this blade is a versatile powerhouse for any dirt or snow project.



Skid shoes protect the blade



Hydraulic tilt up to 10° and angle up to 30°



Replaceable 1/2"D x 4"H steel cutting edge

PART NUMBER	123065	123070	123075	223700
MODEL	72"	84"	96"	TRIP SPRINGS KIT (SET OF 4)
MAX ANGLED WIDTH AT 30°	62 3/8"	72 3/4"	83 1/8"	—
HEIGHT	22"	22"	22"	—
WEIGHT	1,012 LBS	1,040 LBS	1,068 LBS	12 LBS

Optional blade extension available (6'-123045, 7'-123050, 8'-123055). It requires bolts (299432) and lock washers (299830) - 6' requires 8, 7' requires 9, and 8' requires 10 of each.

KEY FEATURES

- ◆ Available in 72", 84", and 96" widths
- ◆ 6-Way Control: Tilt up/down 10°; angle left/right 30° for precise grading & contour work
- ◆ 22" blade height with optional 8" extension for increased capacity
- ◆ 10-gauge rolled steel moldboard
- ◆ Reinforced steel boxed frame design
- ◆ Heavy 1/2" replaceable steel cutting edge
- ◆ Electro-Hydraulic angle control with double hydraulic cylinders
- ◆ Trip lockout function for dirt work
- ◆ Optional trip springs for snow removal
- ◆ Made in the USA
- ◆ Recommended for skid steers over 50 HP
- ◆ Requires Universal Control or OEM wiring harness
- ◆ Universal skid steer mount