



# SNOW PUSHER

## HEAVY DUTY



The **Blue Diamond® Heavy Duty Snow Pusher** delivers outstanding value and performance for commercial snow removal. Available in 96" and 120" widths, it features an adjustable rubber cutting edge, bolt-on AR400 wear shoes, and a 10-gauge rolled moldboard that keeps snow live for smoother pushing and reduced horsepower demand.

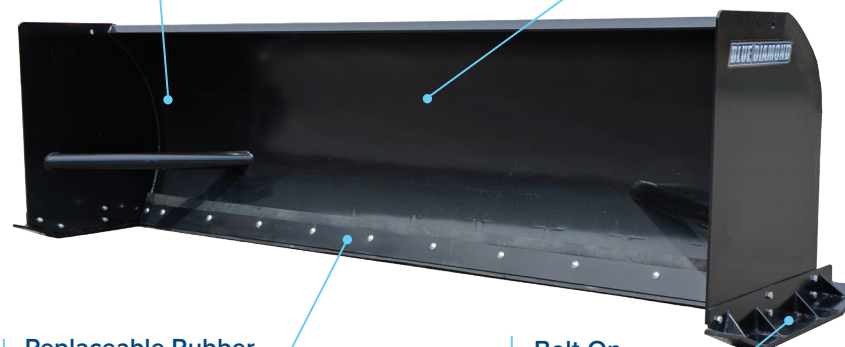
Built for durability, this model includes heavy steel side plates and wear shoes, and a reinforced vertical brace to distribute impact forces — ensuring reliable performance in the toughest winter conditions.

5/16" Steel Side Plates

10-Gauge Rolled Moldboard

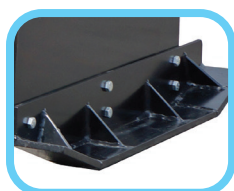
Replaceable Rubber Cutting Edge

Bolt-On Wear Shoes



3 Horizontal Structural Tubes

2 Vertical Reinforced Gussets



Bolt-on wear shoes



Rubber cutting edge



Pull-back option available

### KEY FEATURES

- ◆ Available in 96" and 120" widths
- ◆ 3 horizontal structural tubes from side to side
- ◆ 2 vertical reinforcement gussets to tie all 3 structural tubes together
- ◆ Replaceable 3/4" x 4" AR400 wear shoes
- ◆ 5/16" side plates for added durability
- ◆ 1-1/2" replaceable rubber cutting edge protects pavement and curbs
- ◆ 10-gauge rolled moldboard keeps snow load live for efficient clearing
- ◆ Moldboard Height: 35", Blade Depth 27"
- ◆ Pull-back option available for enhanced versatility
- ◆ Optional poly wear shoes available
- ◆ Powder-coated finish resists rust and wear
- ◆ Universal skid steer mount
- ◆ 1 year warranty

PART NUMBER	120150	120155	120117	120122	220330
MODEL	96"	120"	96" PULLBACK BAR OPTION	120" PULLBACK BAR OPTION	OPTIONAL POLY SKID SHOE (REQ. 2)
OVERALL DEPTH	27"	27"	—	—	—
HEIGHT	35"	35"	—	—	—
WEIGHT	770 LBS	839 LBS	133 LBS	162 LBS	14 LBS